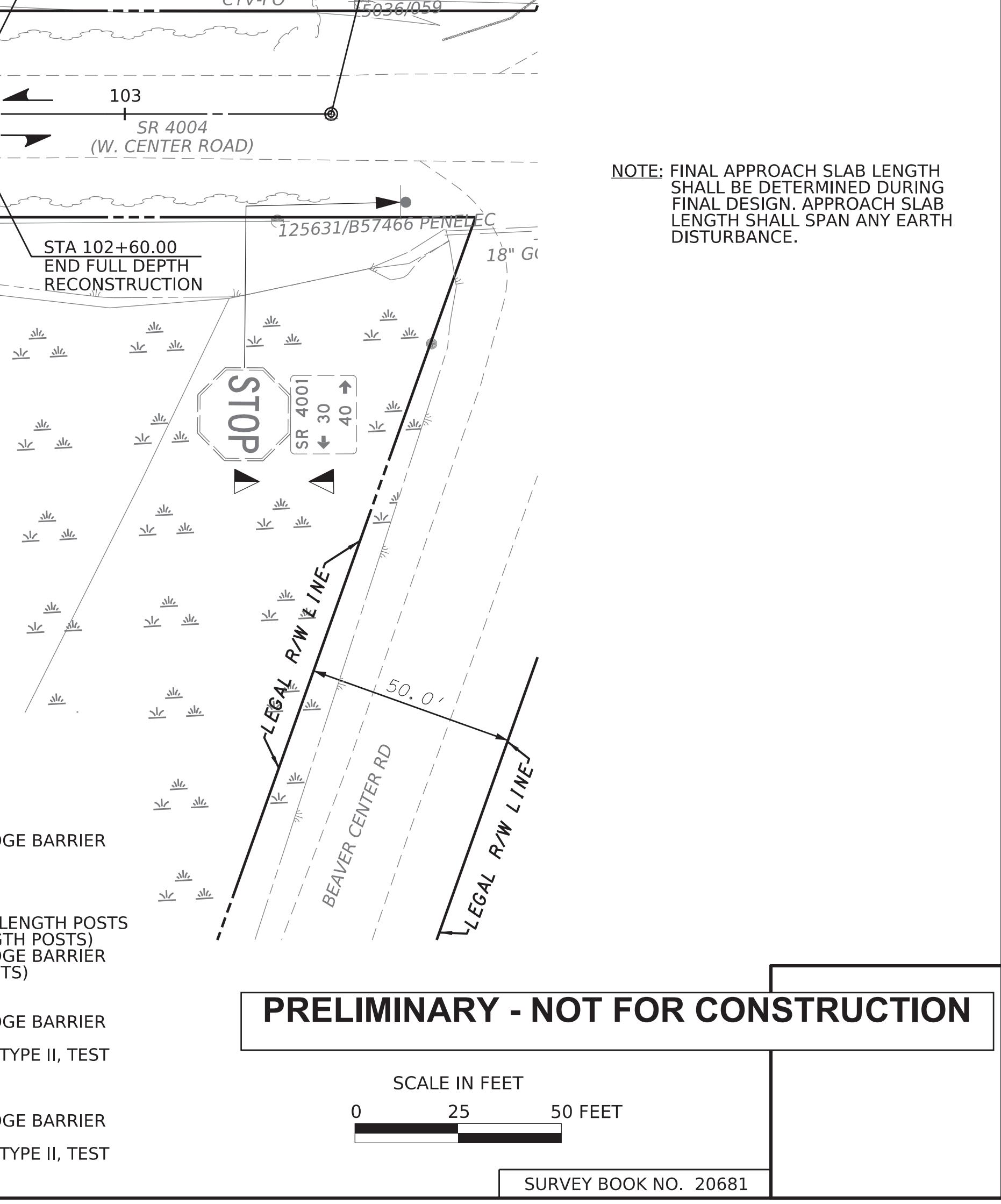
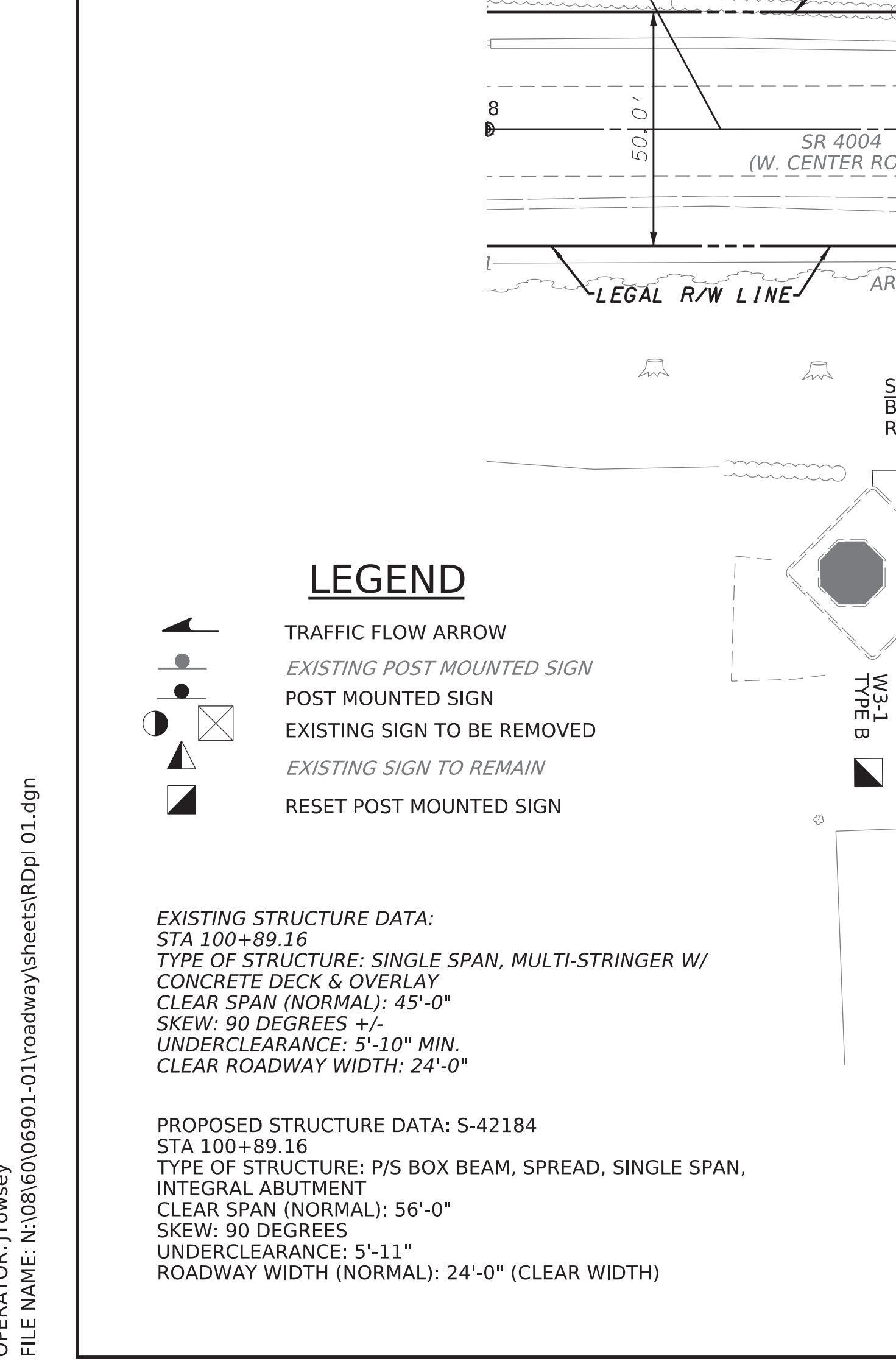
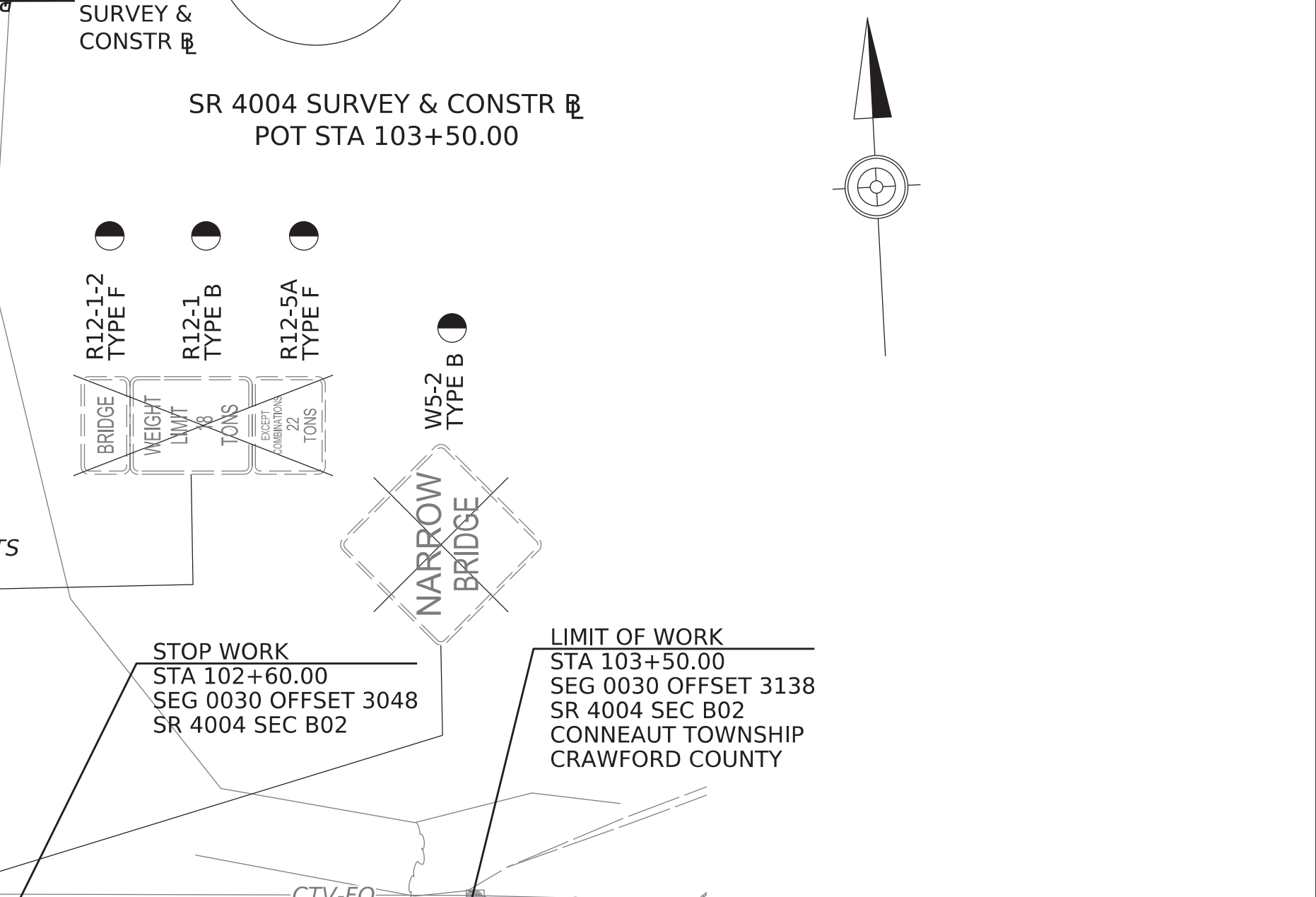
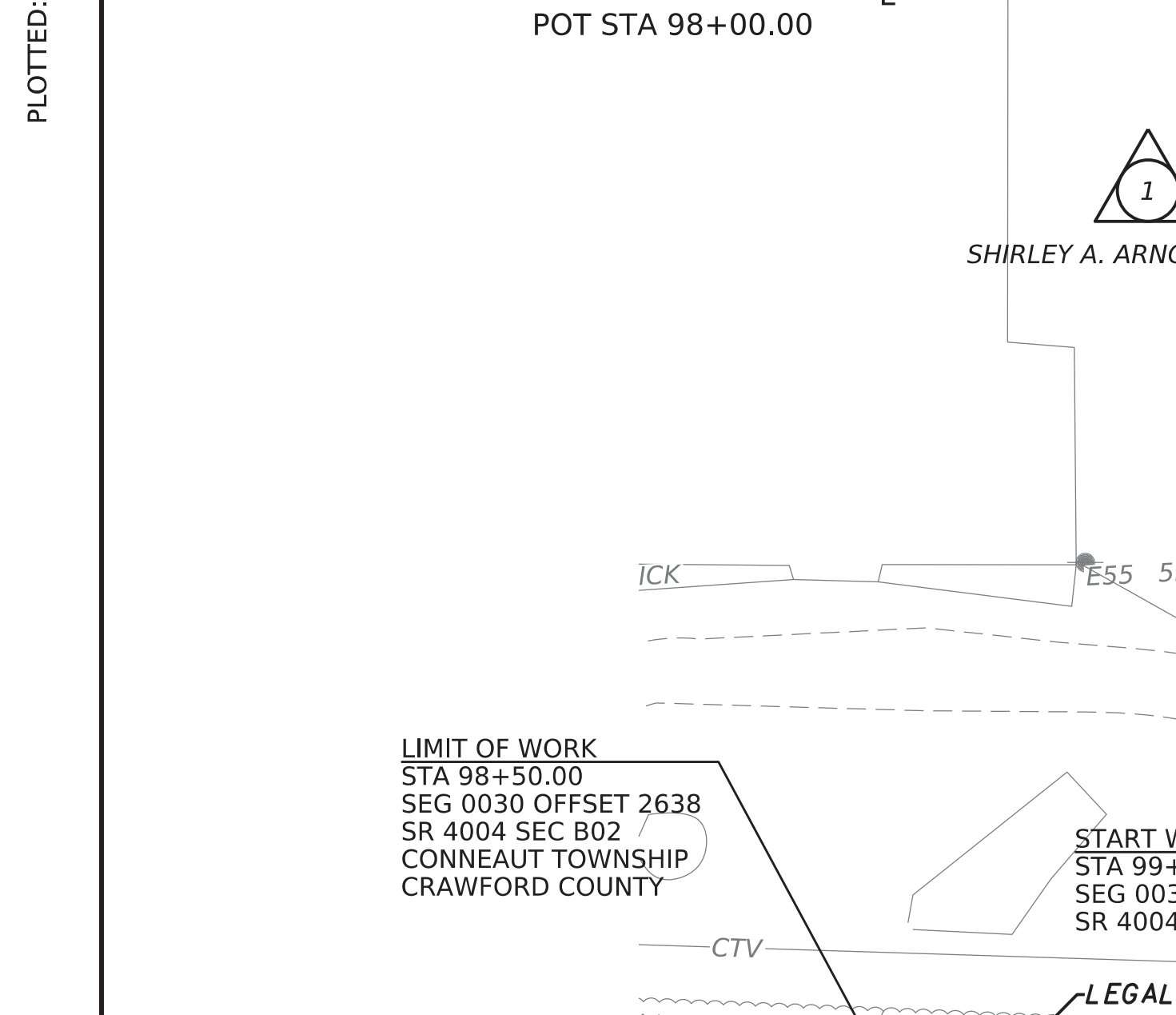
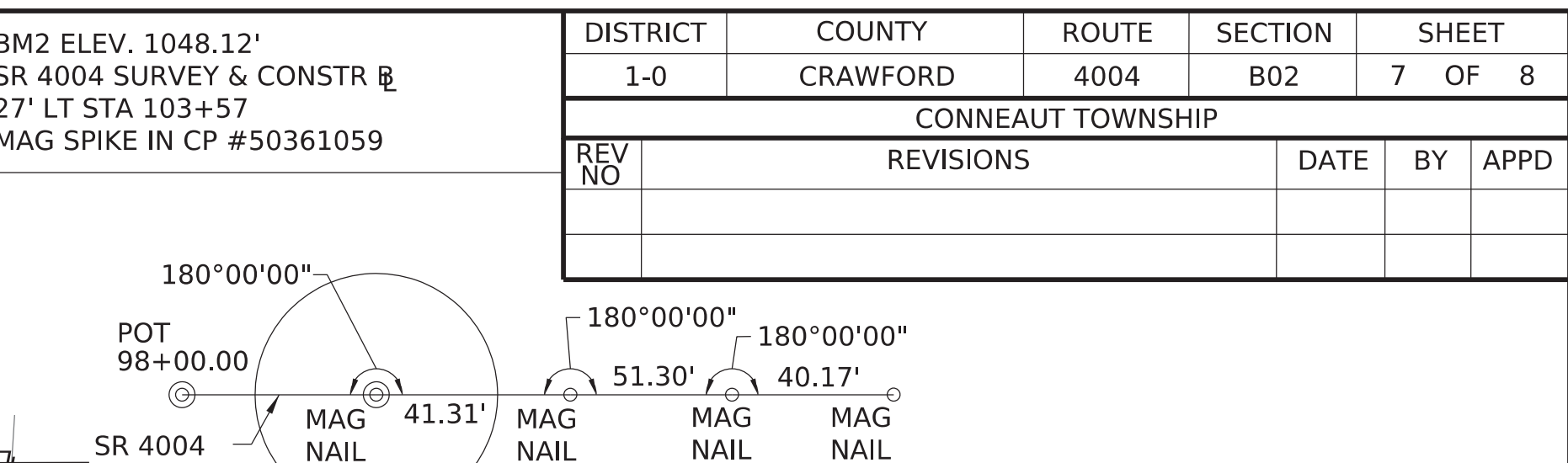
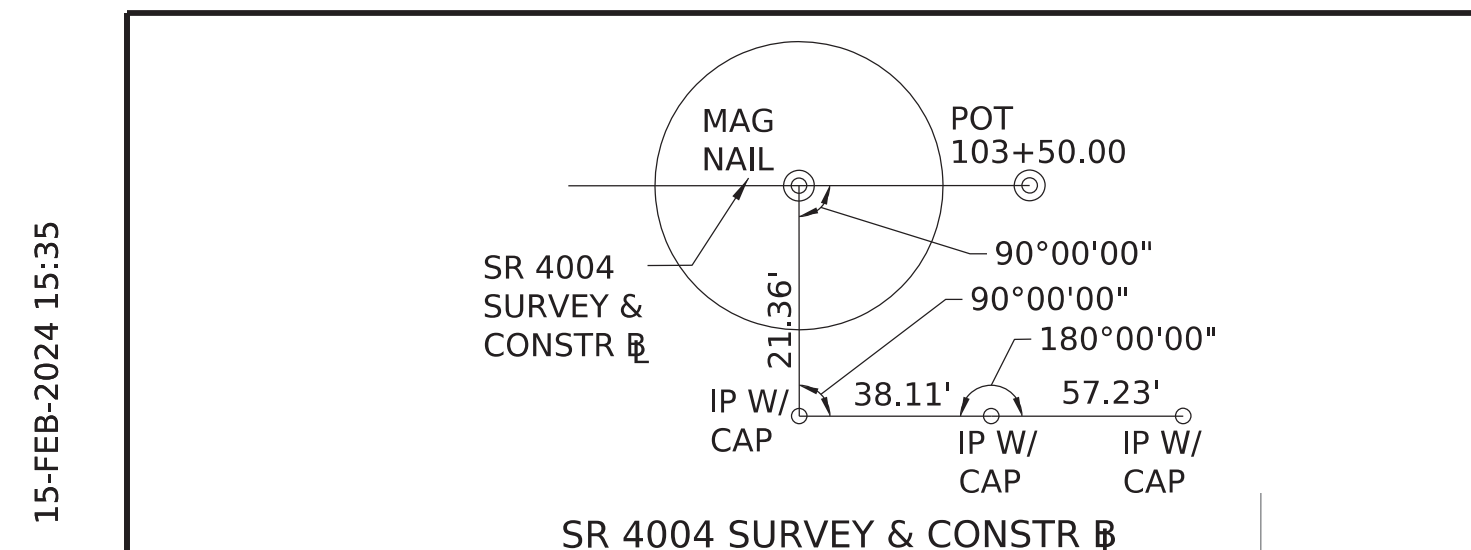
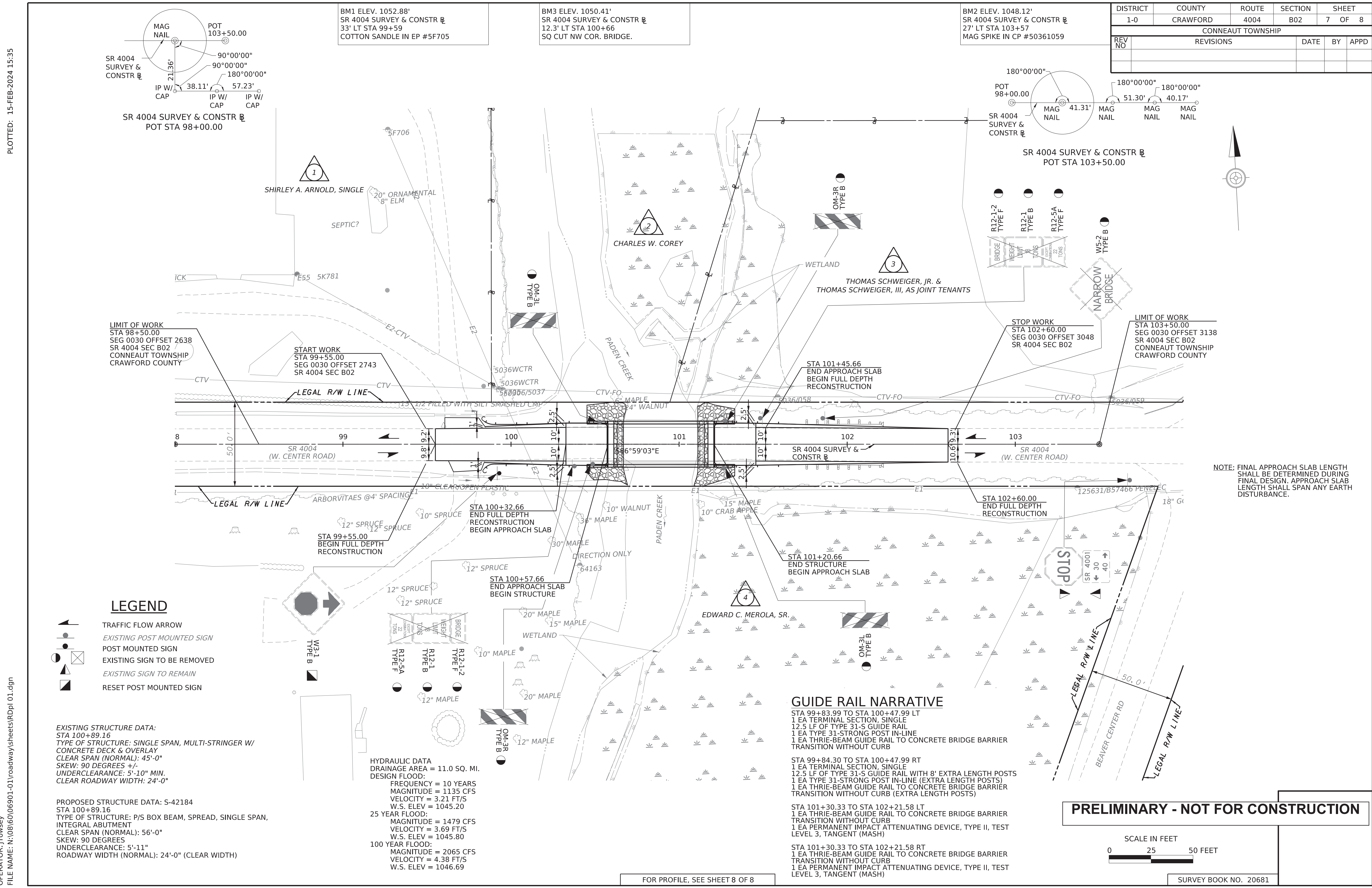


PLOTTED: 15-FEB-2024 15:35

OPERATOR: Jtowsey
FILE NAME: N:\08160\06901-01\roadway\sheet\RDpl 01.dgn

DISTRICT	COUNTY	ROUTE	SECTION	SHEET		
1-0	CRAWFORD	4004	B02	7 OF 8		
CONNEAUT TOWNSHIP						
REV NO	REVISIONS			DATE	BY	APPD



LEGEND

- TRAFFIC FLOW ARROW
- EXISTING POST MOUNTED SIGN
- POST MOUNTED SIGN
- EXISTING SIGN TO BE REMOVED
- EXISTING SIGN TO REMAIN
- RESET POST MOUNTED SIGN

EXISTING STRUCTURE DATA:
 STA 100+89.16
 TYPE OF STRUCTURE: SINGLE SPAN, MULTI-STRINGER W/
 CONCRETE DECK & OVERLAY
 CLEAR SPAN (NORMAL): 45'-0"
 SKEW: 90 DEGREES +/-
 UNDERCLEARANCE: 5'-10" MIN.
 CLEAR ROADWAY WIDTH: 24'-0"

PROPOSED STRUCTURE DATA: S-42184
 STA 100+89.16
 TYPE OF STRUCTURE: P/S BOX BEAM, SPREAD, SINGLE SPAN,
 INTEGRAL ABUTMENT
 CLEAR SPAN (NORMAL): 56'-0"
 SKEW: 90 DEGREES
 UNDERCLEARANCE: 5'-11"
 ROADWAY WIDTH (NORMAL): 24'-0" (CLEAR WIDTH)

HYDRAULIC DATA
 DRAINAGE AREA = 11.0 SQ. MI.
 DESIGN FLOOD:
 FREQUENCY = 10 YEARS
 MAGNITUDE = 1135 CFS
 VELOCITY = 3.21 FT/S
 W.S. ELEV = 1045.20
 25 YEAR FLOOD:
 MAGNITUDE = 1479 CFS
 VELOCITY = 3.69 FT/S
 W.S. ELEV = 1045.80
 100 YEAR FLOOD:
 MAGNITUDE = 2065 CFS
 VELOCITY = 4.38 FT/S
 W.S. ELEV = 1046.69

BRIDGE	WEIGHT	TYPE
R12-1-2	TYPE F	TYPE F
R12-1	TYPE B	TYPE B
R12-5A	TYPE F	TYPE F
W5-2	TYPE B	TYPE B
OM-3R	TYPE B	TYPE B

GUIDE RAIL NARRATIVE

STA 99+83.99 TO STA 100+47.99 LT
 1 EA TERMINAL SECTION, SINGLE
 12.5 LF OF TYPE 31-S GUIDE RAIL
 1 EA TYPE 31-STRONG POST IN-LINE
 1 EA THRIE-BEAM GUIDE RAIL TO CONCRETE BRIDGE BARRIER
 TRANSITION WITHOUT CURB

STA 99+84.30 TO STA 100+47.99 RT
 1 EA TERMINAL SECTION, SINGLE
 12.5 LF OF TYPE 31-S GUIDE RAIL WITH 8' EXTRA LENGTH POSTS
 1 EA TYPE 31-STRONG POST IN-LINE (EXTRA LENGTH POSTS)
 1 EA THRIE-BEAM GUIDE RAIL TO CONCRETE BRIDGE BARRIER
 TRANSITION WITHOUT CURB (EXTRA LENGTH POSTS)

STA 101+30.33 TO STA 102+21.58 LT
 1 EA THRIE-BEAM GUIDE RAIL TO CONCRETE BRIDGE BARRIER
 TRANSITION WITHOUT CURB
 1 EA PERMANENT IMPACT ATTENUATING DEVICE, TYPE II, TEST
 LEVEL 3, TANGENT (MASH)

STA 101+30.33 TO STA 102+21.58 RT
 1 EA THRIE-BEAM GUIDE RAIL TO CONCRETE BRIDGE BARRIER
 TRANSITION WITHOUT CURB
 1 EA PERMANENT IMPACT ATTENUATING DEVICE, TYPE II, TEST
 LEVEL 3, TANGENT (MASH)

PRELIMINARY - NOT FOR CONSTRUCTION

SCALE IN FEET
 0 25 50 FEET

SURVEY BOOK NO. 20681

FOR PROFILE, SEE SHEET 8 OF 8