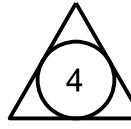
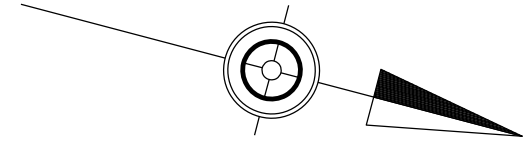


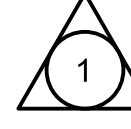
OPERATOR: L:\it\p\w\wsp-us-pw-02\Documents\PA Transportation\PA Transportation\PennDOT\District 1-0\30900800.002\_Rachels Bridge\STR\TSL\Working\m\_Rachels\_PRp\_01.dgn  
 FILE NAME: p\w\wsp-us-pw-02\Documents\PA Transportation\PA Transportation\PennDOT\District 1-0\30900800.002\_Rachels Bridge\STR\TSL\Working\m\_Rachels\_PRp\_01.dgn  
 4/25/2023  
 PLOTTED:

DISTRICT	COUNTY	ROUTE	SECTION	SHEET
1-0	MERCER	0019	B07	6 OF 7
SPRINGFIELD TOWNSHIP				
REVISION NUMBER	REVISIONS	DATE	BY	

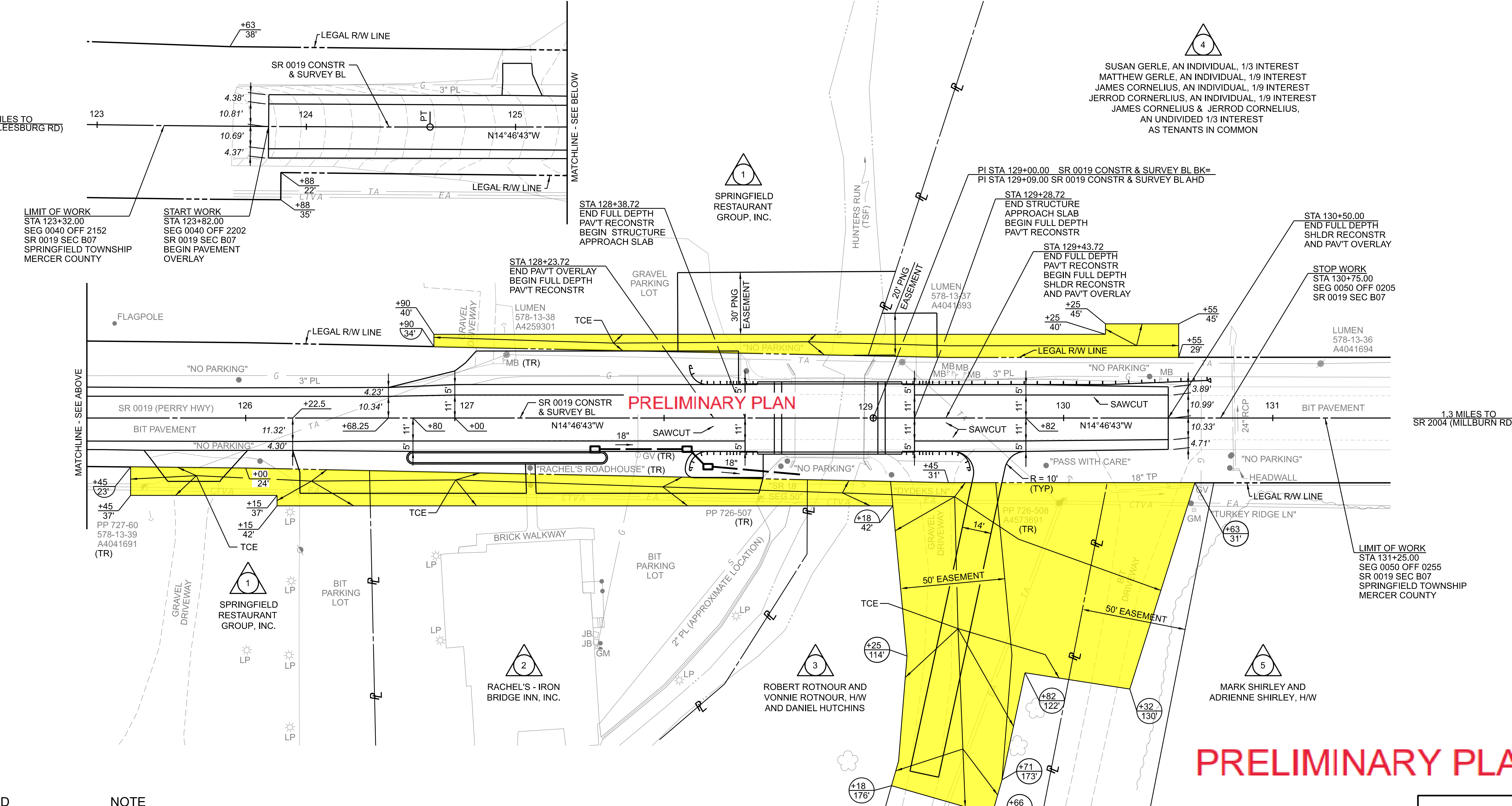
SR 0019  
 CONSTR & SURVEY BL  
 PI STA 122+30.84  
 $\Delta = 02^{\circ}17'00''$  LT  
 $L = 228.36'$   
 $R = 11459.19'$   
 $E = 2.28'$   
 PC STA 120+02.48  
 PT STA 124+59.14



SUSAN GERLE, AN INDIVIDUAL, 1/3 INTEREST  
 MATTHEW GERLE, AN INDIVIDUAL, 1/9 INTEREST  
 JAMES CORNELIUS, AN INDIVIDUAL, 1/9 INTEREST  
 JERROD CORNERLIUS, AN INDIVIDUAL, 1/9 INTEREST  
 JAMES CORNELIUS & JERROD CORNELIUS,  
 AN UNDIVIDED 1/3 INTEREST  
 AS TENANTS IN COMMON



SPRINGFIELD  
 RESTAURANT  
 GROUP, INC.



PRELIMINARY PLAN

PRELIMINARY PLAN

**LEGEND**

- BL BASELINE
- (TR) TO REMAIN
- TCE TEMPORARY CONSTRUCTION EASEMENT
- PNG PEOPLES NATURAL GAS
- TEMPORARY CONSTRUCTION EASEMENT

**NOTE**

TEMPORARY CONSTRUCTION EASEMENT. AN EASEMENT TO USE LAND AS NECESSARY DURING CONSTRUCTION OF THE PROJECT. THE EASEMENT IS REQUIRED ONLY UNTIL THE CONSTRUCTION OR WORK INDICATED BY THE PLAN IS COMPLETED, UNLESS SOONER RELINQUISHED IN WRITING BY THE DEPARTMENT.

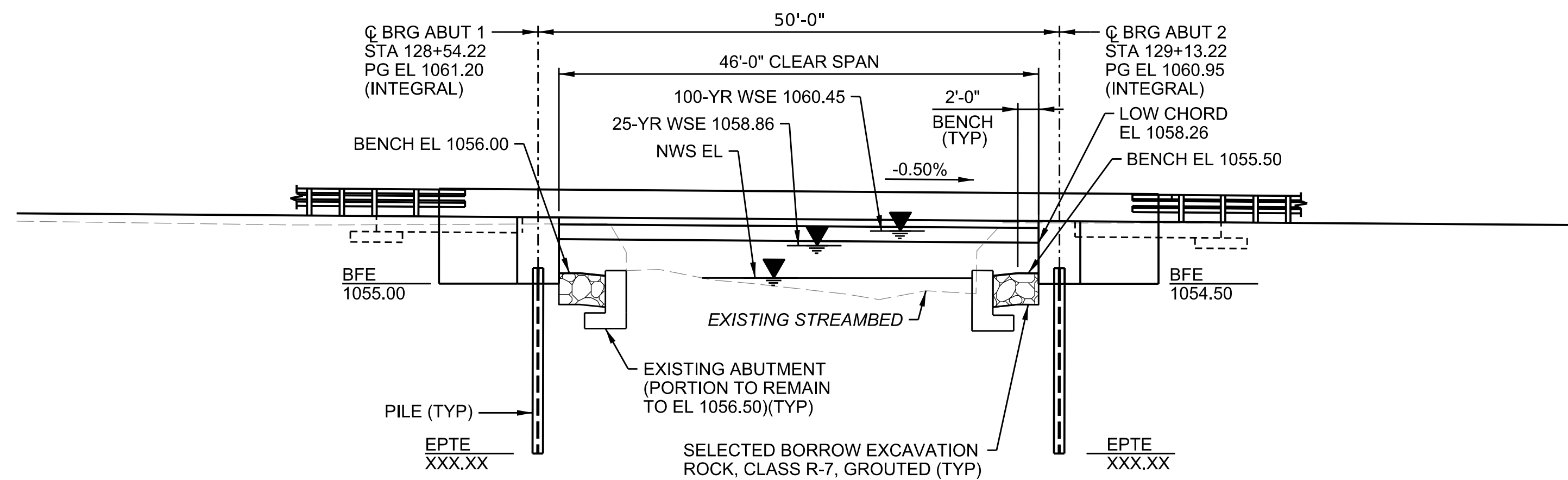
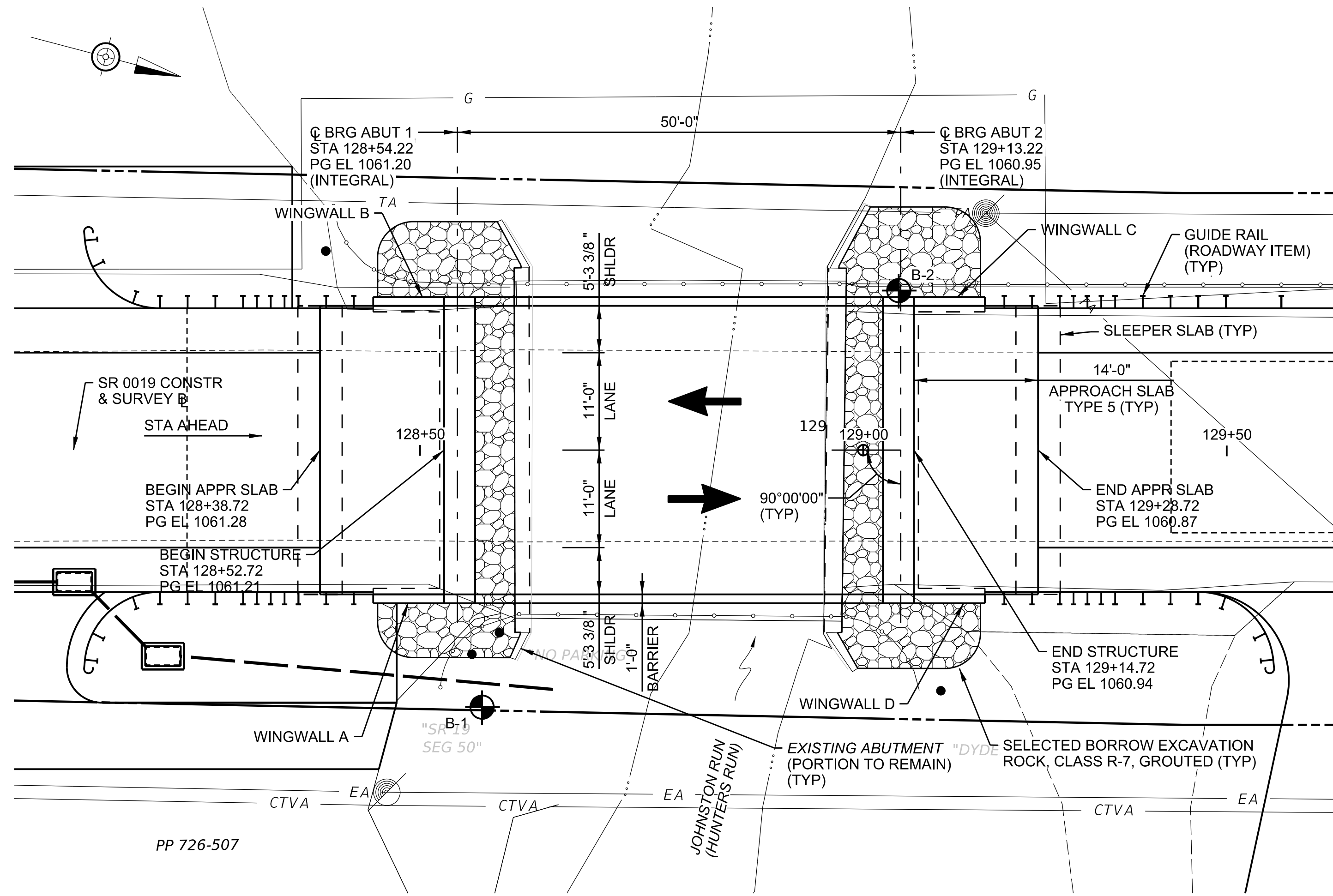
**SCALE**



FOR SR 0019 PROFILE, SEE SHEET 7

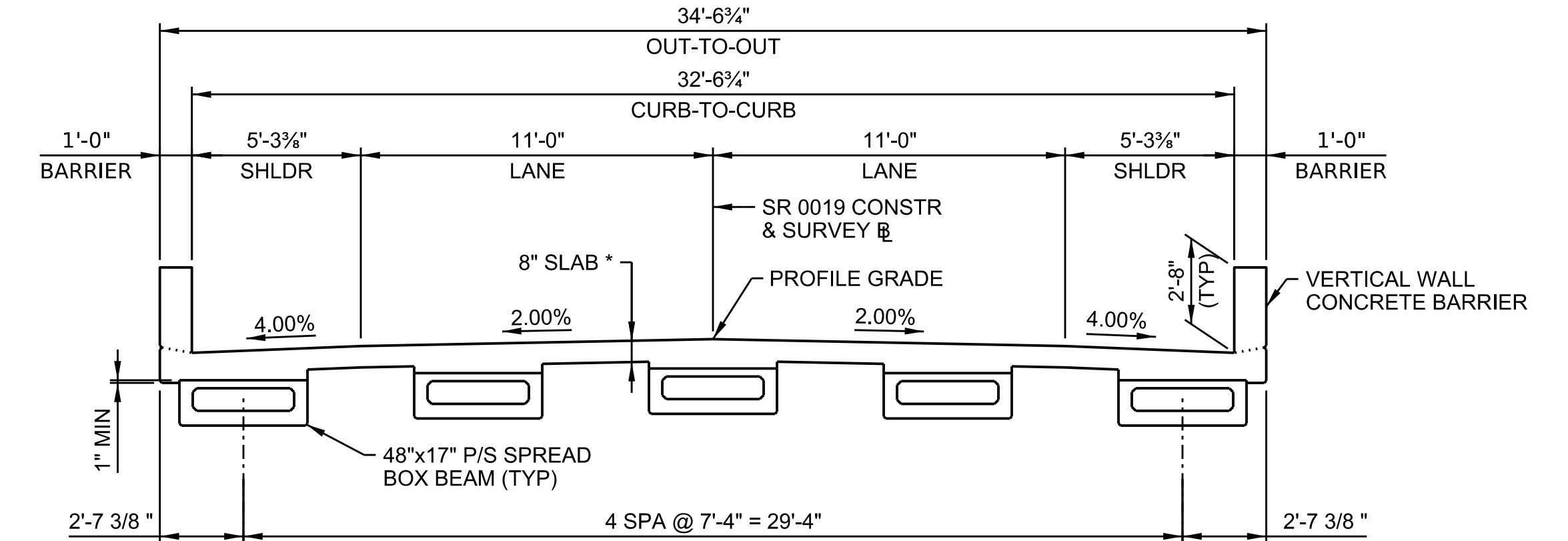
PLOTTED: 18-APR-2023 12:56

OPERATOR: Linin  
 FILE NAME: pw://wsp-us-pw.bentley.com/wsp-us-pw-02/Documents/PA Transportation/PennDOT/District 1-0/30900800.002\_Rachels Bridge/STR/TSU/Plans/RB\_gpe01.dgn



DATUM 1030

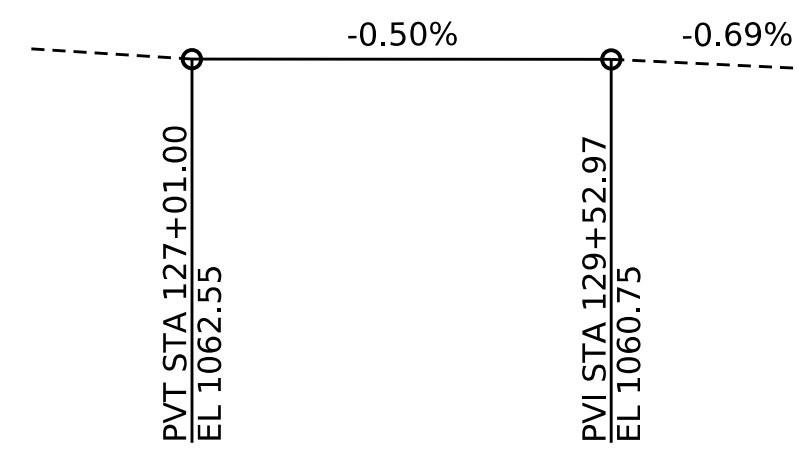
DES: AJM CKD: JMW DWG: NAL CKD: JMW



**HORIZONTAL CURVE DATA**

TANGENT

**VERTICAL CURVE DATA**



**TYPICAL SECTION**

2 0 2 4 FEET

\* INCLUDES 1/2" INTEGRAL WEARING SURFACE

**EXISTING HYDRAULIC DATA:**  
 DRAINAGE AREA = 6.96 SQ MILES  
 WATERWAY OPENING = 106.56 SF  
 LOW CHORD = 1058.04

**DESIGN FLOOD:**  
 FREQUENCY = 25 YEAR  
 MAGNITUDE = 1004 CFS  
 WATER SURFACE ELEVATION = 1058.92  
 VELOCITY = 6.81 FT/SEC

**FREQUENCY = 100 YEAR**  
 MAGNITUDE = 1362 CFS  
 WATER SURFACE ELEVATION = 1060.81  
 VELOCITY = 3.14 FT/SEC

FLOOD OF RECORD: NA

**PROPOSED HYDRAULIC DATA:**  
 DRAINAGE AREA = 6.96 SQ MILES  
 WATERWAY OPENING = 135.08 SF  
 LOW CHORD = 1058.26

**DESIGN FLOOD:**  
 FREQUENCY = 25 YEAR  
 MAGNITUDE = 1004 CFS  
 WATER SURFACE ELEVATION = 1058.86  
 VELOCITY = 6.88 FT/SEC

**FREQUENCY = 100 YEAR**  
 MAGNITUDE = 1362 CFS  
 WATER SURFACE ELEVATION = 1060.45  
 VELOCITY = 3.77 FT/SEC

**NOTES:**

1. XXXXXXX

**PROPOSED BORING LOCATIONS**

BORING	STATION	OFFSET
B-1	128+57	29' RT
B-2	129+13	18' LT

PERMANENT METAL DECK FORMS	BC-732M	1-31-19
ANCHOR SYSTEMS	BC-734M	2-19-21
WALL CONSTRUCTION AND EXPANSION JOINT DETAILS	BC-735M	9-30-16
REINFORCEMENT BAR FABRICATION DETAILS	BC-736M	1-31-19
BRIDGE DRAINAGE	BC-751M	1-31-19
CONCRETE DECK SLAB DETAILS	BC-752M	2-19-21
BEARINGS	BC-755M	1-31-19
STEEL PILE TIP REINFORCEMENTS & SPLICES	BC-757M	9-30-16
PREFORMED NEOPRENE COMPRESSION SEAL JOINT FOR APPROACH SLABS	BC-766M	1-31-19
MISCELLANEOUS PRESTRESS DETAILS	BC-775M	9-30-16
REINFORCED CONCRETE REPAIR	BC-783M	1-31-19
TYPICAL WATERPROOFING AND EXPANSION DETAILS	BC-788M	1-31-19
CLASSIFICATION OF EARTHWORK FOR STRUCTURES	RC-11M	6-1-10
BACKFILL AT STRUCTURES	RC-12M	2-8-19
GUIDE RAIL TO BRIDGE BARRIER TRANSITIONS	RC-50M	2-19-21
DESCRIPTION	DWG NO.	APP DATE

**SUPPLEMENTAL DRAWINGS**

**PRELIMINARY PLAN**

Mark	Description	By	Chk'd	Recm'd.	Date
REVISIONS					

**COMMONWEALTH OF PENNSYLVANIA  
 DEPARTMENT OF TRANSPORTATION**

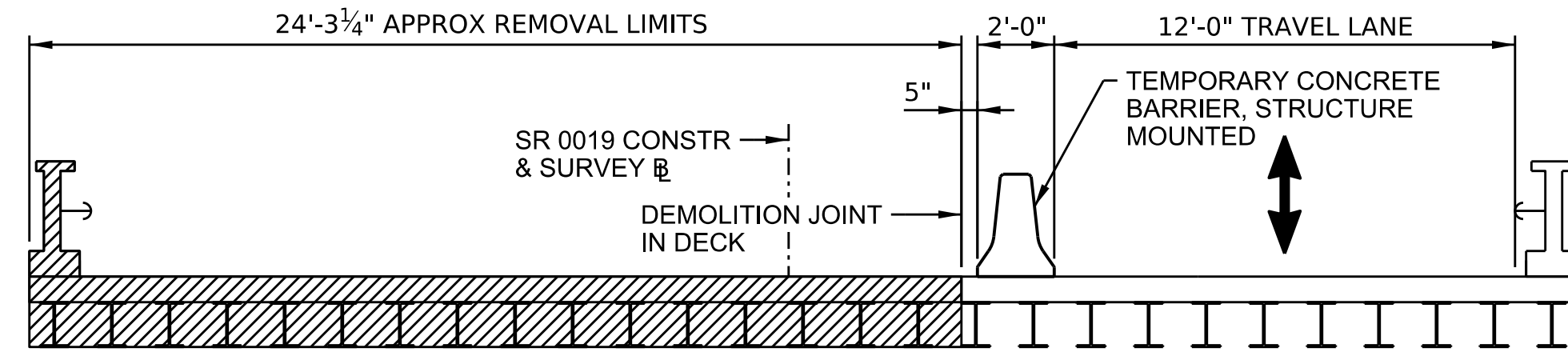
**MERCER COUNTY  
 S.R. 19, SECTION B07  
 SEGMENT 0050, OFFSET 0000  
 STA. 128+79.22  
 OVER JOHNSTON RUN (HUNTERS RUN)  
 1-SPAN COMPOSITE P/S CONCRETE SPREAD BOX BEAM BRIDGE  
 TYPE, SIZE & LOCATION**

RECOMMENDED \_\_\_\_\_

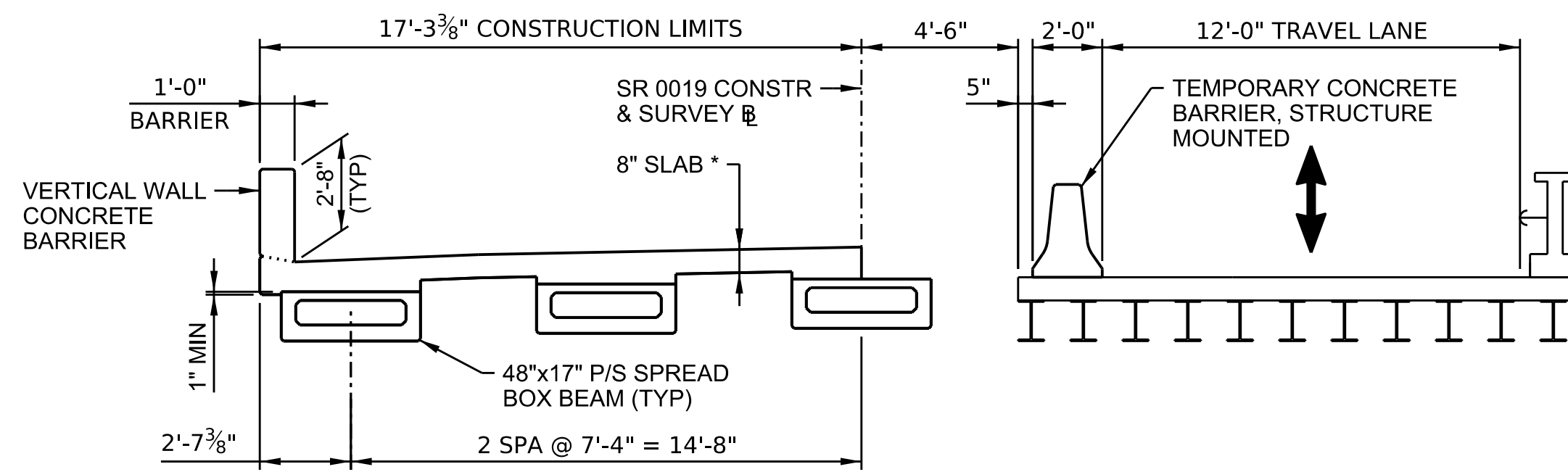
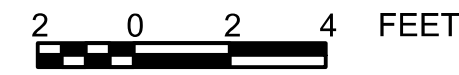
BRIDGE ENGINEER

SHEET 1 OF 1

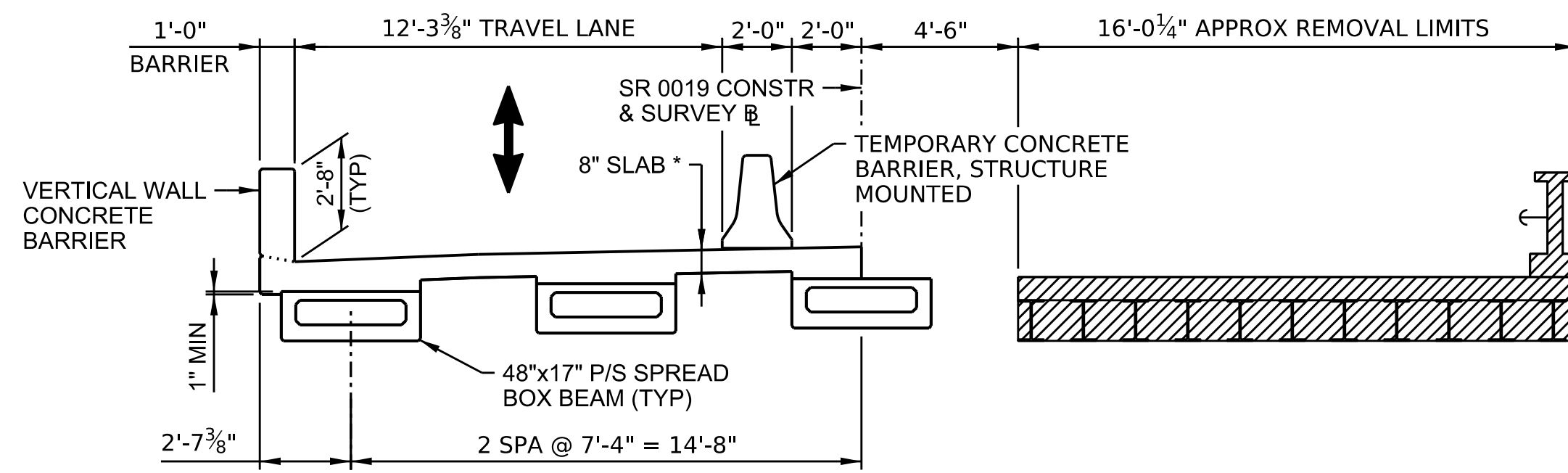
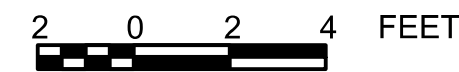
S - XXXXX



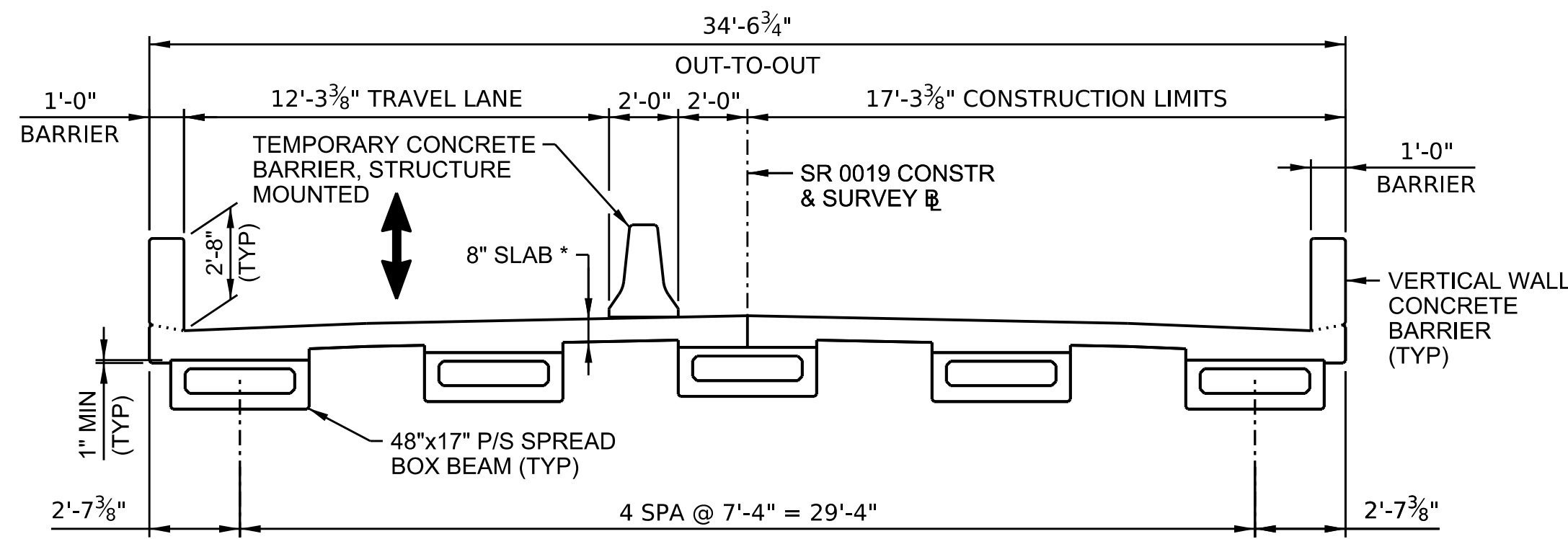
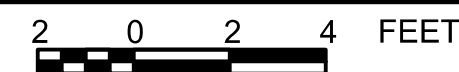
**PHASE 1 - REMOVAL SECTION**



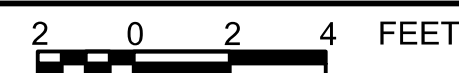
**PHASE 1 - CONSTRUCTION SECTION**



**PHASE 2 - REMOVAL SECTION**



**PHASE 2 - CONSTRUCTION SECTION**



\* INCLUDES 1/2\"/>

**LEGEND:**

EXISTING STRUCTURE REMOVAL LIMITS

**NOTES:**

1. PROVIDE TYPE A INSTALLATION AS PER BC-719M.

**PRELIMINARY PLAN**

Mark	Description	By	Chk'd	Recm'd.	Date
REVISIONS					

**COMMONWEALTH OF PENNSYLVANIA  
 DEPARTMENT OF TRANSPORTATION**

**MERCER COUNTY  
 S.R. 19, SECTION B07  
 SEGMENT 0050, OFFSET 0000  
 STA. 128+79.22  
 OVER JOHNSTON RUN (HUNTERS RUN)  
 1-SPAN COMPOSITE P/S CONCRETE SPREAD BOX BEAM BRIDGE  
 TYPE, SIZE & LOCATION**

RECOMMENDED \_\_\_\_\_

BRIDGE ENGINEER

SHEET 1 OF 1

S - XXXXX