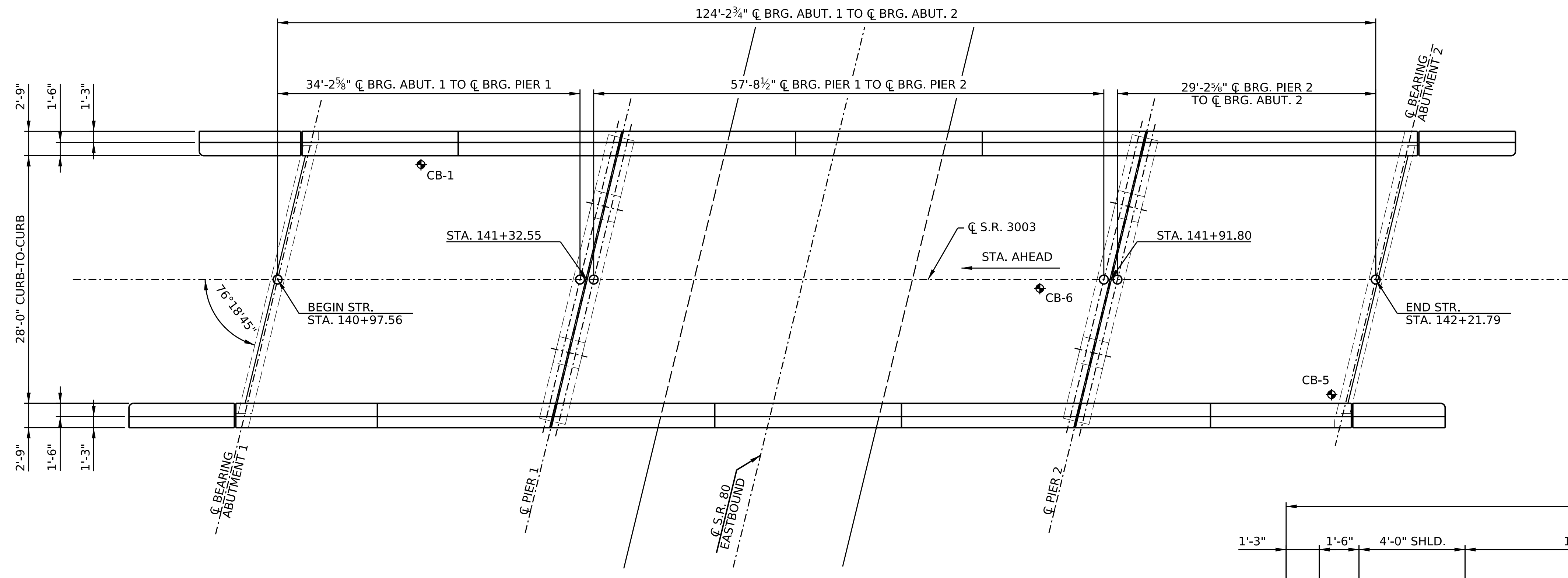
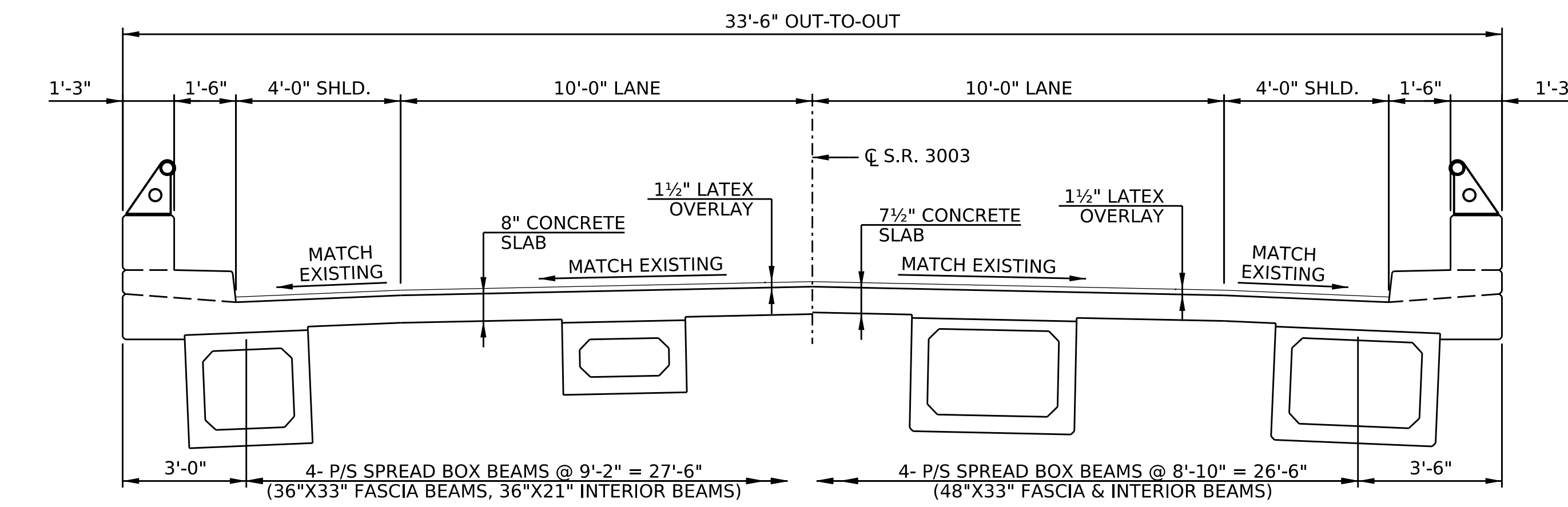


OPERATOR: ty/ejones
 FILE NAME: pw://PDEDPRAPPW01.penn.dot.ctb:Connect_Projects/Documents/OpenRoads_Projects/D01/60-Venango/60_3003 B00 (97364)/DESIGN/Bridges/CADD Files/603003B00 - GENERAL PLAN S-5659A
 PLOTTED: 3-JAN-2024 07:27

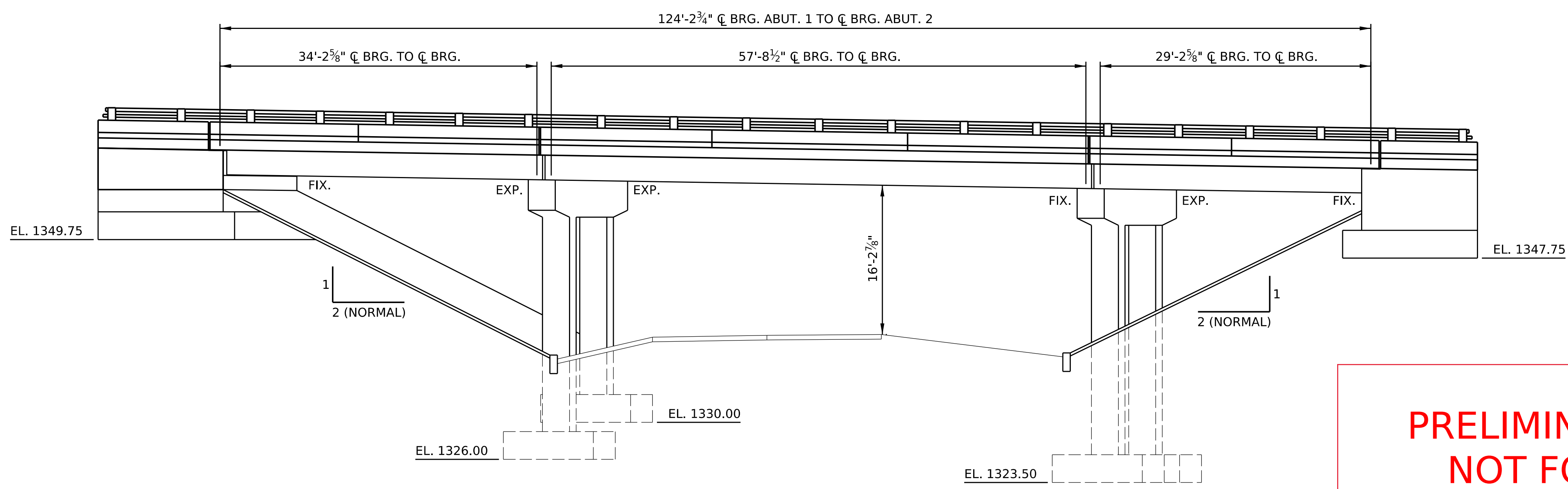


PLAN
2 0 4 8 FEET



PROPOSED TYPICAL SECTION - SPAN 1, 2 & 3

(LOOKING STATIONS AHEAD)
1 0 1 2 3 FEET



ELEVATION
2 0 4 8 FEET

- GENERAL NOTES:**
- DESIGN SPECIFICATIONS: AASHTO DESIGN DIVISION, LRFD BRIDGE DESIGN SPECIFICATIONS, 8TH EDITION, 2017 AND AS SUPPLEMENTED BY DESIGN MANUAL PART 4, DECEMBER 2019 EDITION (INCLUDING REVISIONS).
 - PROVIDE MATERIALS AND PERFORM WORK IN ACCORDANCE WITH THE PENNSYLVANIA DEPARTMENT OF TRANSPORTATION SPECIFICATIONS PUBLICATION 408 INCLUDING CURRENT SUPPLEMENT AND CONTRACT SPECIAL PROVISIONS.
 - DESIGN LIVE LOADS: -HS-20 AND P-82
 - DEAD LOADS: -INCLUDES A SURFACE AREA DENSITY OF 49 PSF FOR FUTURE WEARING SURFACE.

Mark	Description	By	Chk'd	Recm'd.	Date
REVISIONS					

S.R. 3003 PREVIOUSLY KNOWN AS L.R. 60003
 BMS STR ID: 60-3003-0050-2498 MPMS/ECMS PROJ: 98177/97364 BRKEY: 33792

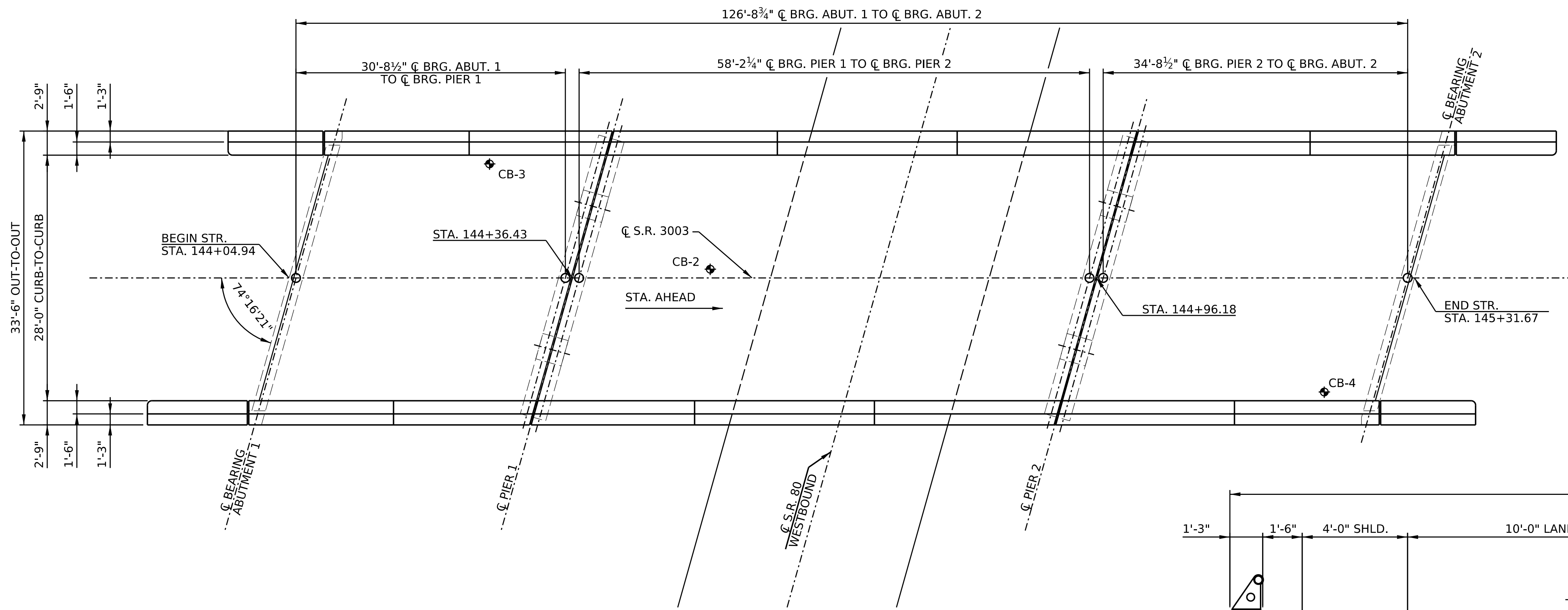
**COMMONWEALTH OF PENNSYLVANIA
 DEPARTMENT OF TRANSPORTATION**

**VENANGO COUNTY
 S.R. 3003 SECTION B00
 SEGMENT 0050 OFFSET 2498
 S.R 3003-B00 STA. 141+59.68
 OVER SR 0080 EASTBOUND
 BRIDGE PRESERVATION
 TYPE, SIZE, AND LOCATION**

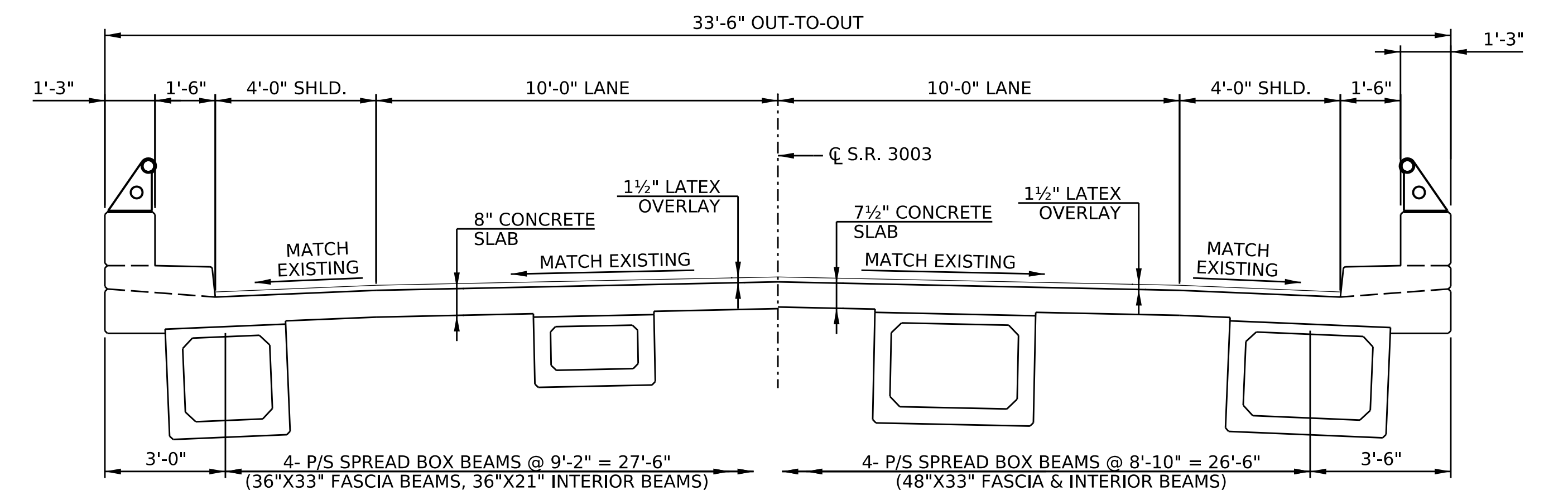
**PRELIMINARY
 NOT FOR
 CONSTRUCTION**

RECOMMENDED _____	SHEET <u>1</u> OF <u>2</u>
_____ DISTRICT BRIDGE ENGINEER	S - 42042

OPERATOR: ty/ej/ones
 FILE NAME: pw://PDEDPRAPPW01.penn.dot.ct:Connect_Protects/Documents/OpenRoads_Projects/D01/60-Venango/60 3003 B00 (97364)/DESIGN/Bridges/CADD Files/603003B00 - GENERAL PLAN S-5659A PLOTTED: 3-JAN-2024 07:25

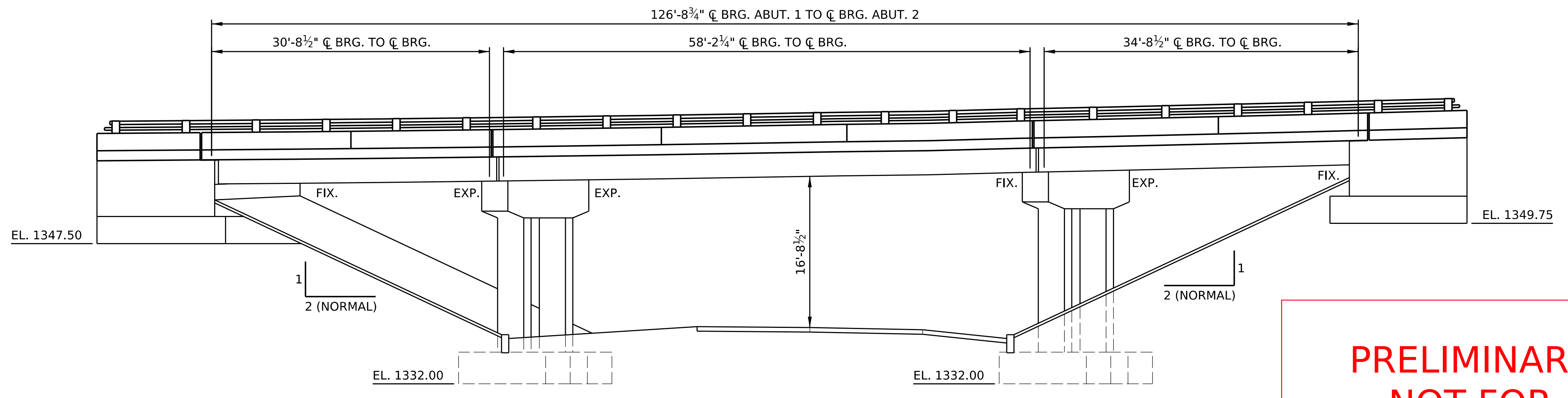


PLAN
 2 0 4 8 FEET



PROPOSED TYPICAL SECTION - SPAN 1, 2 & 3

(LOOKING STATIONS AHEAD)
 1 0 1 2 3 FEET



ELEVATION
 2 0 4 8 FEET

Mark	Description	By	Chk'd	Recm'd.	Date
REVISIONS					

S.R. 3003 PREVIOUSLY KNOWN AS L.R. 60003
 BMS STR ID: 60-3003-0050-2805 MPMS/ECMS PROJ: 98177/97364 BRKEY: 33794

**COMMONWEALTH OF PENNSYLVANIA
 DEPARTMENT OF TRANSPORTATION**

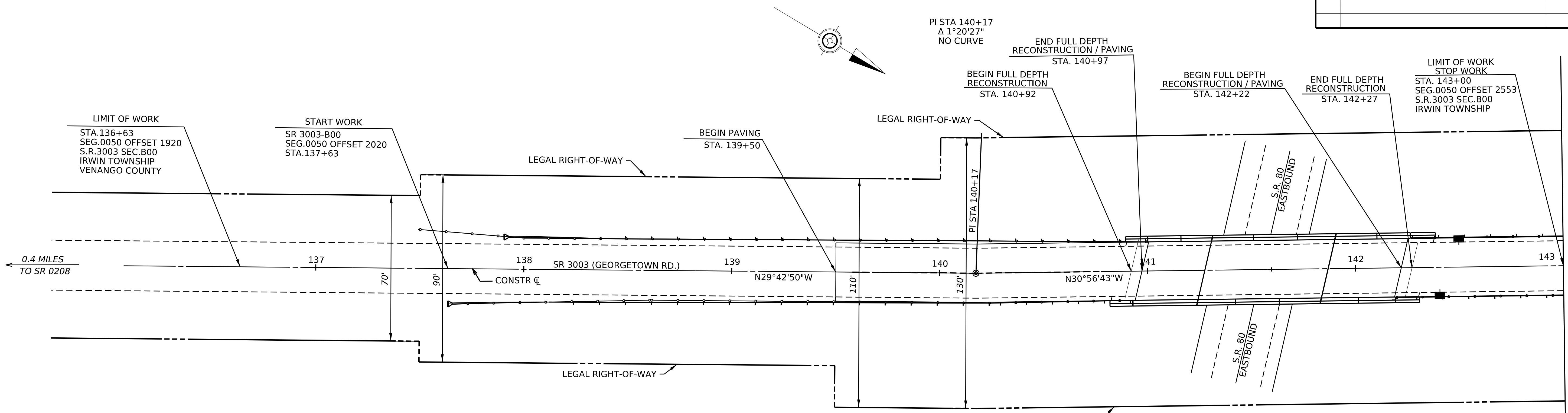
**VENANGO COUNTY
 S.R. 3003 SECTION B01
 SEGMENT 0050 OFFSET 2805
 S.R 3003-B01 STA. 144+68.31
 OVER SR 0080 WESTBOUND
 BRIDGE PRESERVATION
 TYPE, SIZE, AND LOCATION**

**PRELIMINARY
 NOT FOR
 CONSTRUCTION**

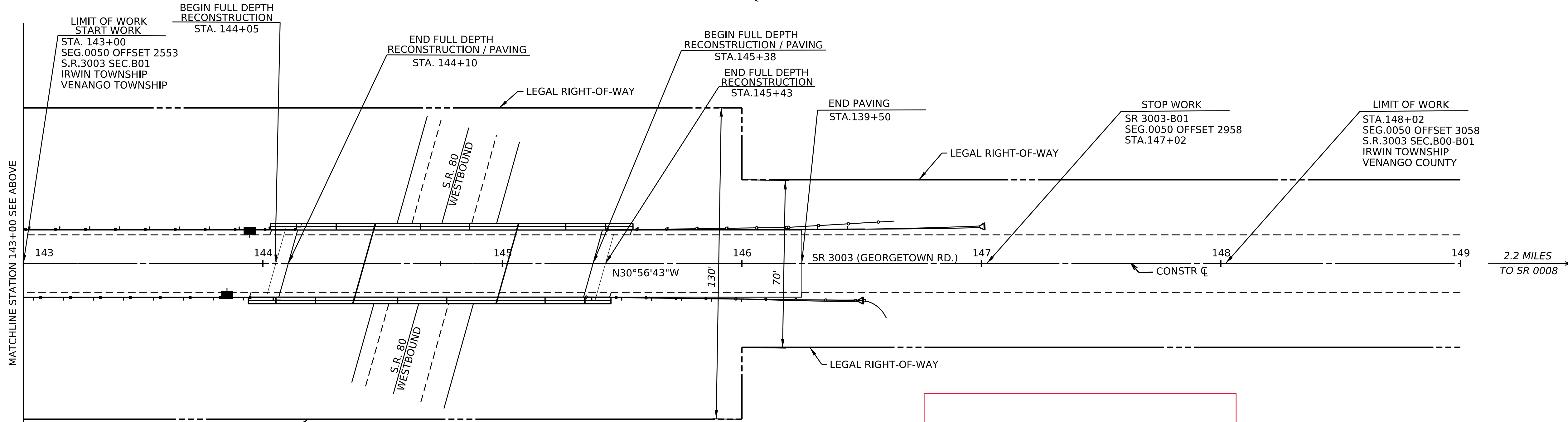
RECOMMENDED _____	SHEET <u>2</u> OF <u>2</u>
_____ DISTRICT BRIDGE ENGINEER	S - 42043

OPERATOR: jacobwillia
 FILE NAME: pw://PDEDPRAPPW01.pennndot.lcl:Connect_Projects/Documents/OpenRoads_Projects/D01/60-Venango/60 3003 B00 (97364)/DESIGN/Roadway/CADD Files/60 SR 3003-B00 PLAN SHEETS.dgn
 PLOTTED: 8-JAN-2024 14:55

DISTRICT	COUNTY	ROUTE	SECTION	SHEET
1-0	VENANGO	3003	B00/B01	3 OF 7
IRWIN TOWNSHIP				
REV NO	REVISIONS	DATE	BY	APPD



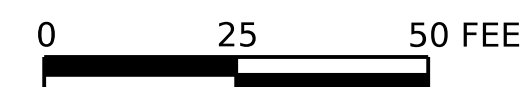
STRUCTURE DATA
 EXISTING STRUCTURE EB
 STATION: 141+69.38
 TYPE: P/S CONCRETE SPREAD BOX BEAM
 SPANS: 3
 SKEW: 76°18'-44.5"
 AVG. UNDERCLEARANCE: 16'-2 7/8"
 CLEAR ROADWAY WIDTH: 28'-0"



STRUCTURE DATA
 EXISTING STRUCTURE WB
 STATION: 144+59.03
 TYPE: P/S CONCRETE SPREAD BOX BEAM
 SPANS: 3
 SKEW: 74°16'20.5"
 AVG. UNDERCLEARANCE: 16'-8 1/2"
 CLEAR ROADWAY WIDTH: 28'-0"

**PRELIMINARY
 NOT FOR
 CONSTRUCTION**

SCALE



HORIZONTAL

