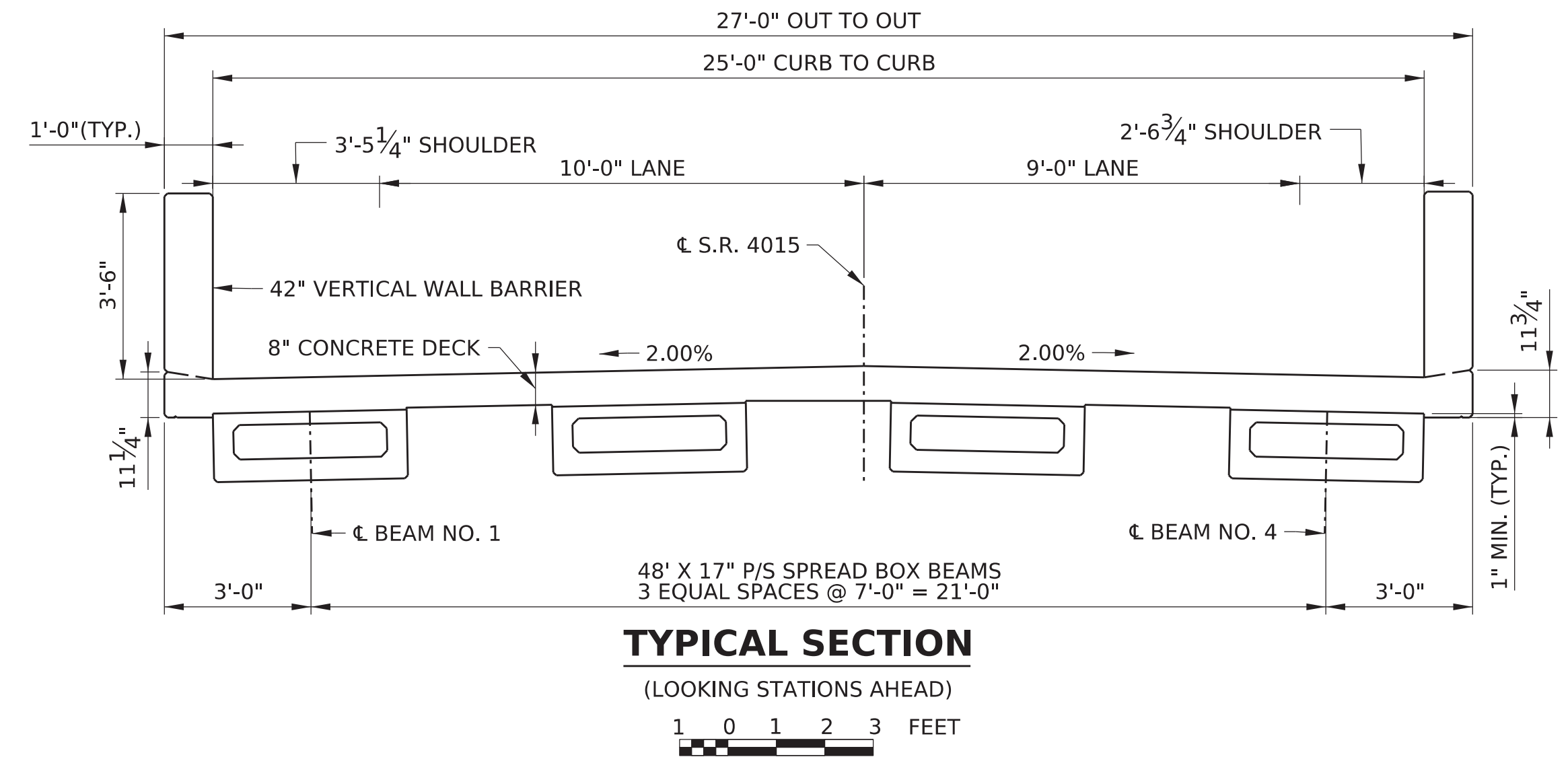
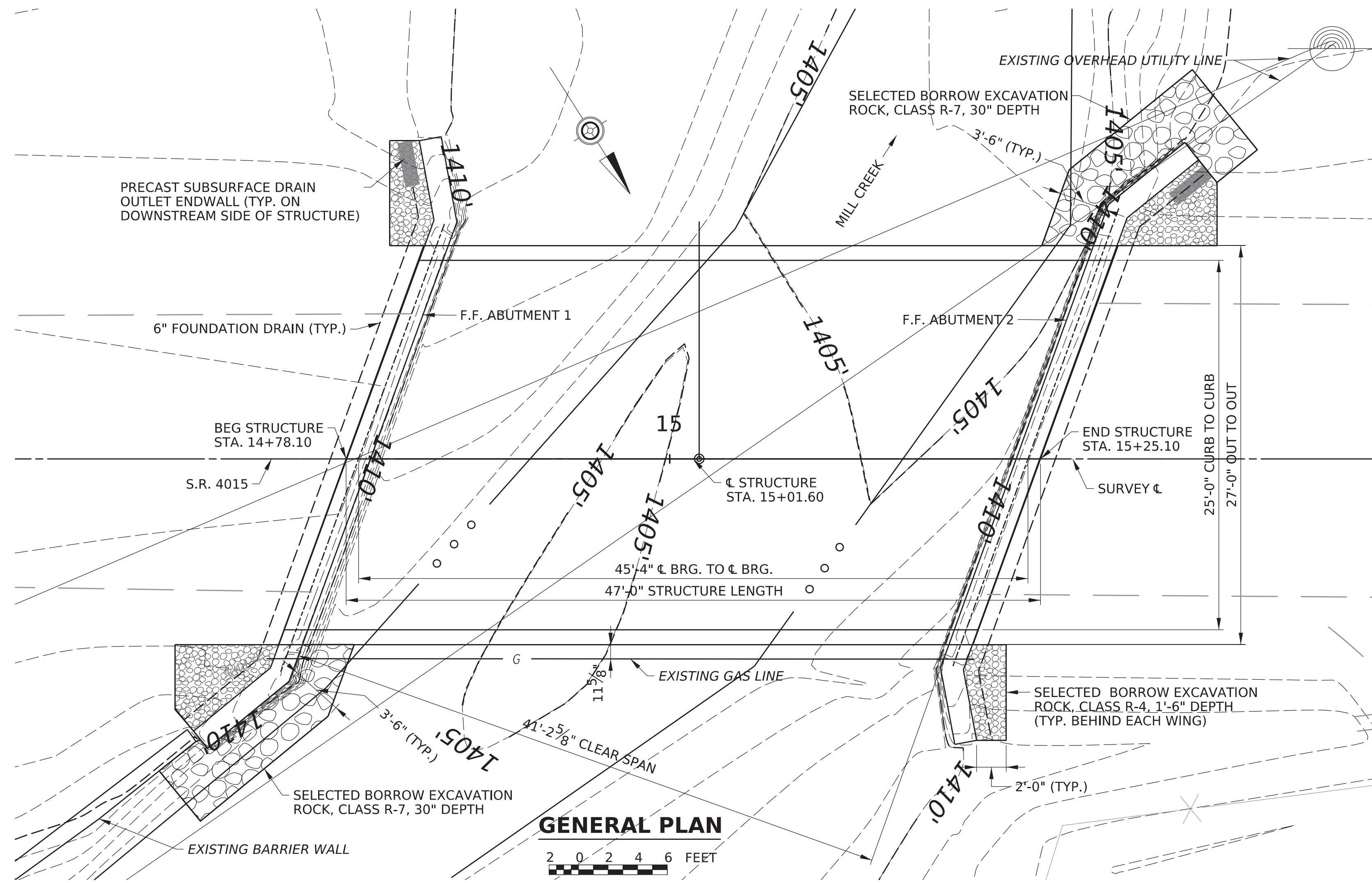


PLOTTED: 20-MAR-2024 08:10

OPERATOR: kjohnson
FILE NAME: pw://PDEDPRAPPW01.penn.dot.ctb:Connect_Projects/Documents/OpenRoads_Projects/D01/61-Warren/61_4015 B00 (78952)/DESIGN/Bridge/CADD Files/614015000101514_MAST.dgn



**PRELIMINARY
NOT FOR
CONSTRUCTION**

STRUCTURE DATA	
EXISTING STRUCTURE STATION: 15+05.50	PROPOSED STRUCTURE STATION: 15+01.60
TYPE: ADJACENT BOX BEAM	TYPE: SPREAD BOX BEAM
CLEAR SPAN: 1 @ 41'-2 5/8"	CLEAR SPAN: 1 @ 41'-2 5/8"
SKEW: 70°00'00"	SKEW: 70°00'00"
OUT TO OUT: 28'-3 3/4"	OUT TO OUT: 27'
CLEAR ROADWAY WIDTH: 24'-9 3/4"	CLEAR ROADWAY WIDTH: 25'
MIN. UNDERCLEARANCE: 6'0"	MIN. UNDERCLEARANCE: 6'1"
LATITUDE: 41.955134	LONGITUDE: -79.435594

DESIGN SPECIFICATIONS

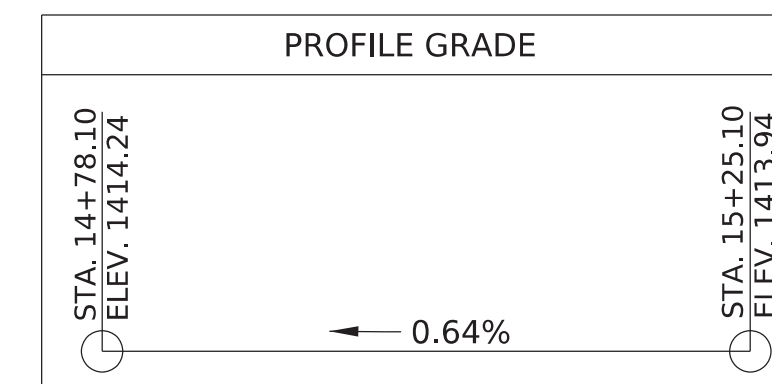
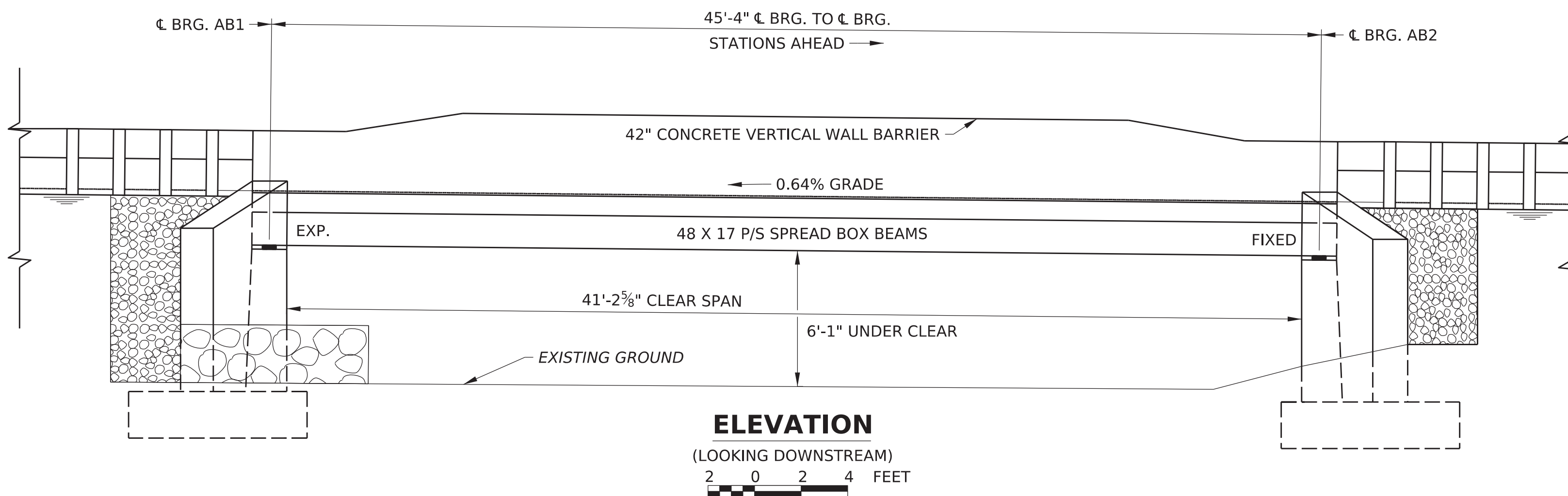
- AASHTO LRFD BRIDGE DESIGN SPECIFICATIONS, 8TH EDITION, 2017 AND AS SUPPLEMENTED BY DESIGN MANUAL, PART 4, DECEMBER 2019 EDITION (INCLUDING REVISIONS)
- LIVE LOAD DISTRIBUTION TO GIRDERS IS BASED UPON DESIGN MANUAL, PART 4 DISTRIBUTION FACTOR METHOD.
- DESIGN IS IN ACCORDANCE WITH THE LRFD METHOD.

DESIGN LIVE LOADS

- PHL-P3, P-82 AND P2016-13
- FATIGUE DESIGN BASED ON THE FOLLOWING:
ADTT 15 (2031)

DEAD LOADS

- INCLUDES SURFACE ARE DENSITY OF 0.049 KSF FOR FUTURE WEARING SURFACE ON THE DECK SLAB.
- INCLUDES SURFACE ARE DENSITY OF 0.015 KSF FOR PERMANENT METAL DECK FORMS THAT TAKES INTO ACCOUNT THE WEIGHT OF THE FORM, PLUS THE WEIGHT OF THE CONCRETE IN THE VALLEYS OF THE FORMS.



Mark	Description	By	Chk'd	Recm'd.	Date
REVISIONS					

S.R. 4015 PREVIOUSLY KNOWN AS L.R. 61061-01M
BMS STR ID: 61-4015-0010-1514 MPMS/ECMS PROJ: 78952

**COMMONWEALTH OF PENNSYLVANIA
DEPARTMENT OF TRANSPORTATION**

**WARREN COUNTY
S.R. 4015 SECTION B00
SEGMENT 0010 OFFSET 1514
STA. 15+01.60
OVER MILL CREEK
1 SPAN SUPERSTRUCTURE REPLACEMENT
TYPE, SIZE & LOCATION PLAN**

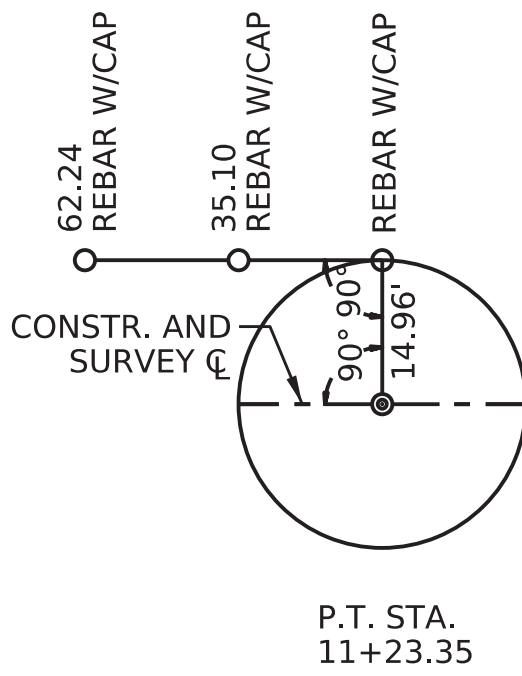
RECOMMENDED _____
BRIDGE ENGINEER

SHEET 1 OF 1
S - 42174

DISTRICT	COUNTY	ROUTE	SECTION	SHEET
1-0	WARREN	4015	B00	X OF XX
FREEHOLD TOWNSHIP				
REV NO	REVISIONS	DATE	BY	APPD

PLOTTED: 19-MAR-2024 08:51

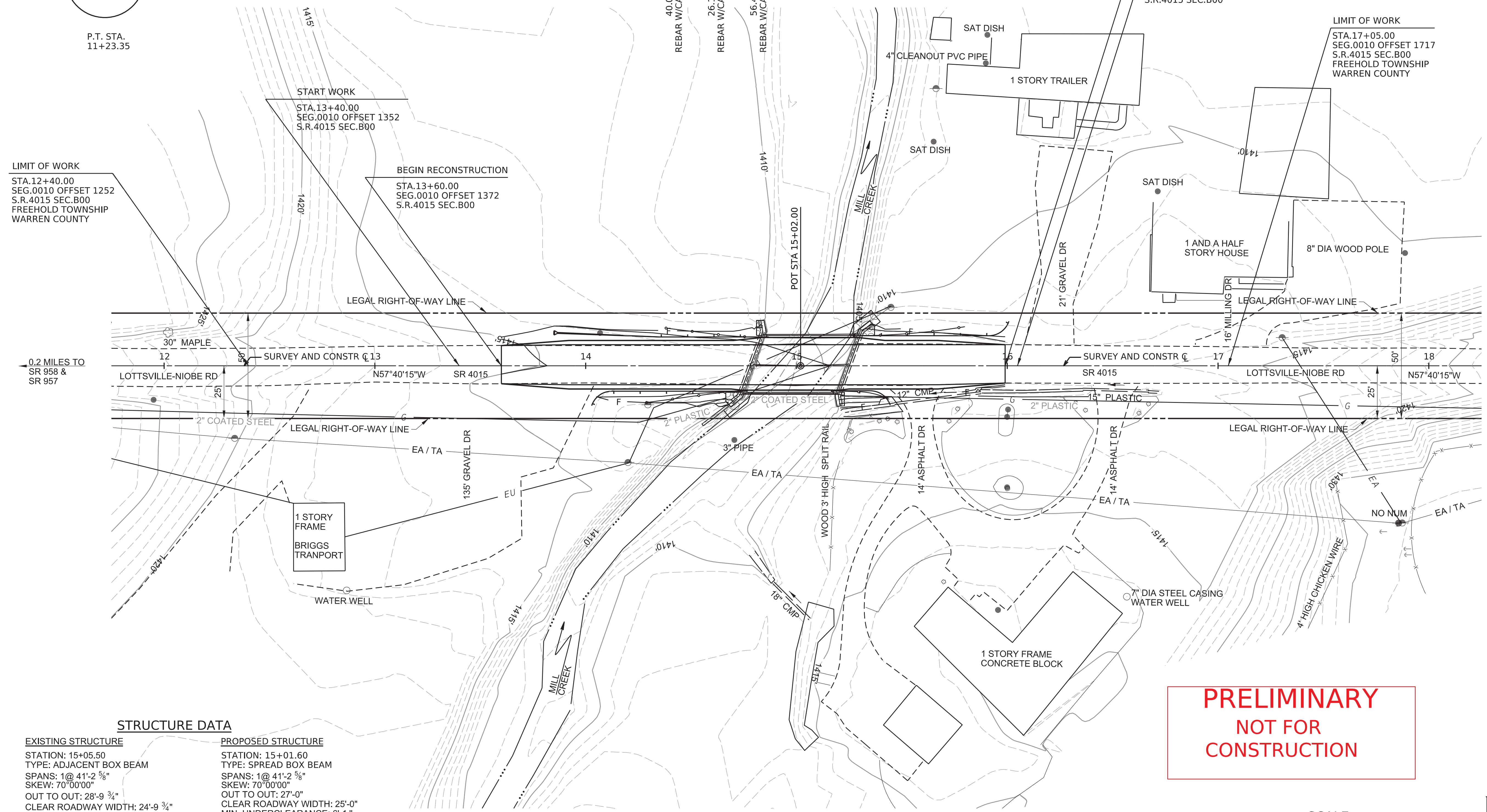
OPERATOR: rolesnanik
 FILE NAME: pw://PDEDPRAPPW01.pennndot.icl:Connect_Pjcts/Projects/Documents/OpenRoads_Pjcts/D01/61-Warren/61.4015 B00 (78952)/DESIGN/Roadway/CADD Files/614015b00_plan.dgn



BM #1 ELEVATION 1433.42
 35' RT STA. 12+31
 COTTON GIN SPINDLE IN EP #41992/75FLASH9

P.O.T. STA. 20+00.00

BM #2 ELEVATION 1431.98
 13' LT STA. 17+31
 COTTON GIN SPINDLE IN EP #42026



LIMIT OF WORK
 STA. 12+40.00
 SEG. 0010 OFFSET 1252
 S.R. 4015 SEC. B00
 FREEHOLD TOWNSHIP
 WARREN COUNTY

START WORK
 STA. 13+40.00
 SEG. 0010 OFFSET 1352
 S.R. 4015 SEC. B00

BEGIN RECONSTRUCTION
 STA. 13+60.00
 SEG. 0010 OFFSET 1372
 S.R. 4015 SEC. B00

END RECONSTRUCTION
 STA. 15+99.00
 SEG. 0010 OFFSET 1611
 S.R. 4015 SEC. B00

STOP WORK
 STA. 16+05.00
 SEG. 0010 OFFSET 1617
 S.R. 4015 SEC. B00

LIMIT OF WORK
 STA. 17+05.00
 SEG. 0010 OFFSET 1717
 S.R. 4015 SEC. B00
 FREEHOLD TOWNSHIP
 WARREN COUNTY

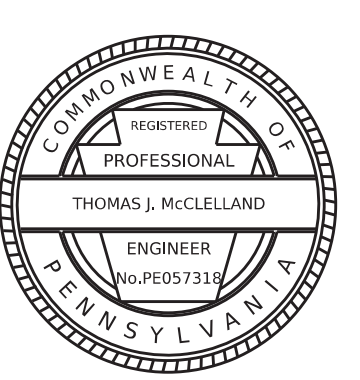
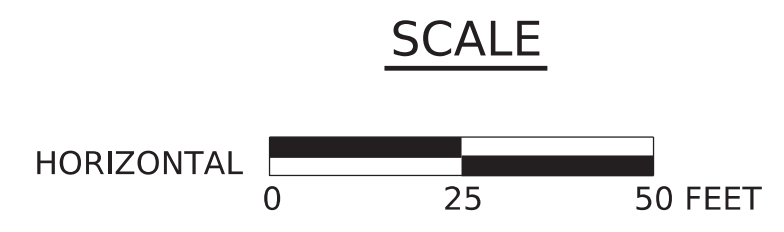
0.2 MILES TO
 SR 958 &
 SR 957

1.5 MILES TO
 T-539

STRUCTURE DATA

EXISTING STRUCTURE	PROPOSED STRUCTURE
STATION: 15+05.50	STATION: 15+01.60
TYPE: ADJACENT BOX BEAM	TYPE: SPREAD BOX BEAM
SPANS: 1@ 41'-2 3/8"	SPANS: 1@ 41'-2 3/8"
SKEW: 70°00'00"	SKEW: 70°00'00"
OUT TO OUT: 28'-9 3/4"	OUT TO OUT: 27'-0"
CLEAR ROADWAY WIDTH: 24'-9 3/4"	CLEAR ROADWAY WIDTH: 25'-0"
MIN. UNDERCLEARANCE: 6'-0"	MIN. UNDERCLEARANCE: 6'-1"
	STRUCTURE NO. S-42174
	RECOMMENDED: 02-16-2024

**PRELIMINARY
 NOT FOR
 CONSTRUCTION**



SURVEY BOOK NO. 20671 FOR PROFILE, SEE SHEET X OF XX