

VIRTUAL PUBLIC MEETING

Stump Creek Bridge #3

SR 2012, Section 550

Sykesville/Troutville Road over Stump Creek

Jefferson County

Henderson Township

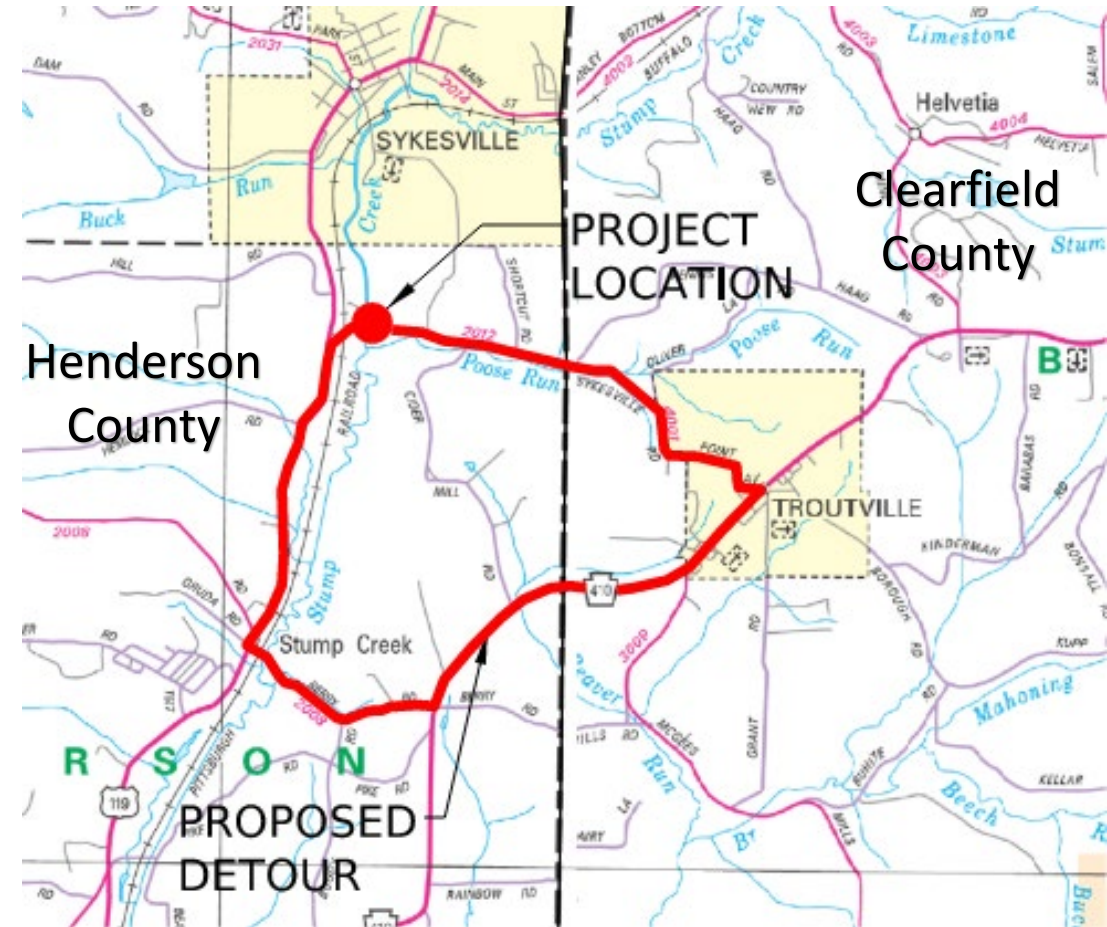
ECMS No. 116508

May 2023

PROJECT LOCATION

Stump Creek Bridge #3 carries SR 2012 (Sykesville/Troutville Road) over Stump Creek in Henderson Township, Jefferson County, Pennsylvania

The project is located one mile south of Sykesville along US 119, east of the highway across the railroad tracks.



PROJECT OVERVIEW

Stump Creek Bridge #3 Replacement

This project consists of the replacement of the structure carrying SR 2012 over Stump Creek in Henderson Township, Jefferson County. Stump Creek flows north to south under SR 2012. The existing single span six-girder bridge has an approximate 24' curb-to-curb width, with a clear roadway width of 22'.

The work involves the replacement of the structure and approximately 250 feet of approach roadway reconstruction. The horizontal roadway alignment will match the existing. There was careful consideration taken when adjusting the profile around the structure due to the history of overtopping as well as ingress and egress concerns with the adjacent driveways. The lanes and shoulders over the structure will remain unchanged to provide two 10'-0" lanes with 3'-0" shoulders over Stump Creek.

A detour will be used during the bridge reconstruction.

Work is scheduled to start in May of 2024 and to be completed in November of 2024.

Current construction cost estimate is approximately \$1.4 million.



PROJECT PHOTOGRAPHS

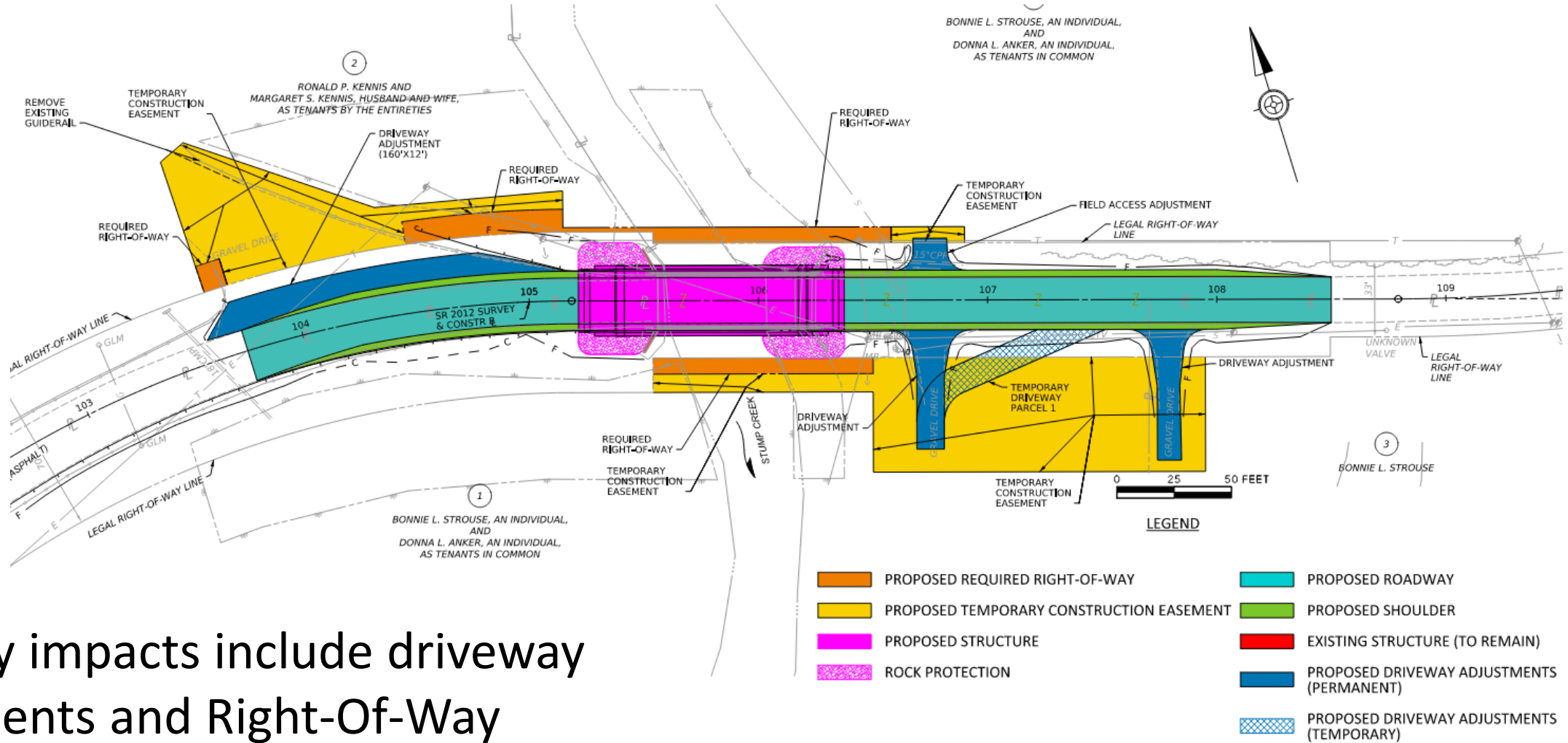
Bridge - Looking West (Towards US 119)



Roadway - Looking East (Towards Troutville)



PROPOSED PROJECT PLAN VIEW



Property impacts include driveway adjustments and Right-Of-Way required for structure replacement

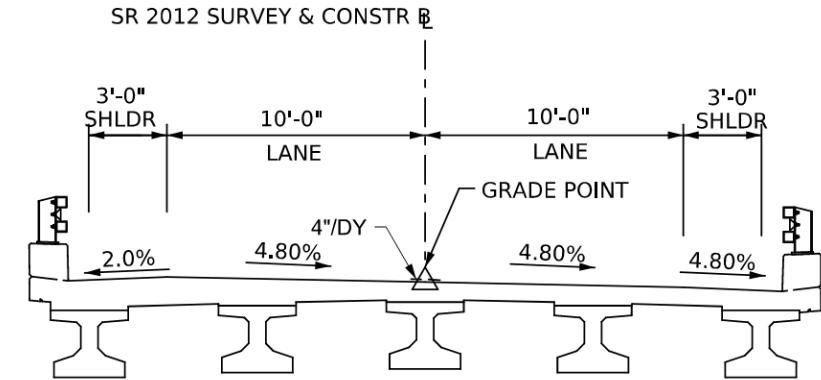
PROPOSED STRUCTURE PLAN

ANTICIPATED STRUCTURE WORK:

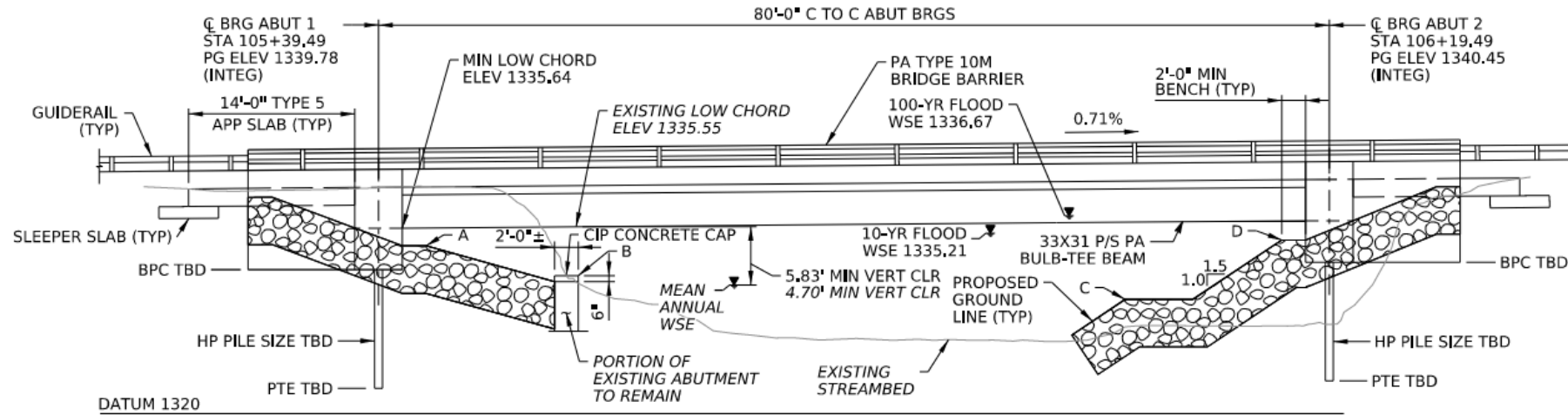
- Complete bridge replacement
- New approach slabs
- Guiderail and transition upgrades

No change to horizontal geometry with this project

Raised profile to increase hydraulic opening and improve (lower) flooding elevations



BRIDGE SECTION



ELEVATION



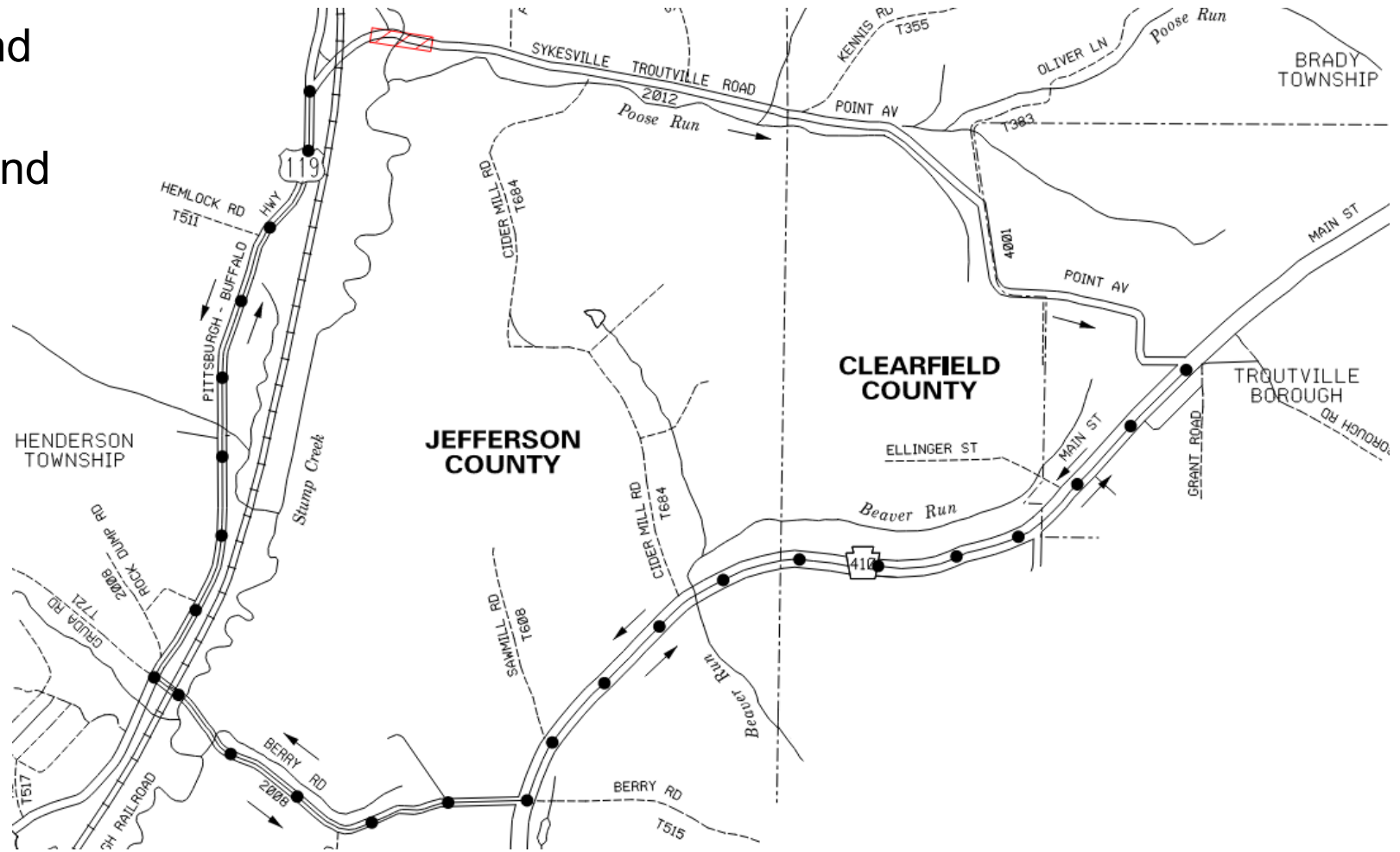
TRAFFIC CONTROL PLAN - DETOUR

A detour will be implemented to perform the bridge replacement and other roadway activities.

The detour will be 6.8 miles long and will direct traffic through Troutville Borough, Clearfield County, PA.

Traffic utilizing US 119 will continue south to turn left onto SR 2008 (Berry Road) following the detour signs placed along the route. Traffic will continue along SR 2008 (Berry Road) until its intersection with SR 410 (Main Street) where they are directed to take a left and travel through Troutville Borough, Clearfield County, PA.

Traffic utilizing SR 410 (Main Street) will continue on SR 410 (Main Street) until they reach SR 2008 (Berry Road), then turning right onto SR 2008 (Berry Road) towards US 119.



QUESTIONS?

Please take time to respond and submit the provided Comment Form or contact the Project Manager with questions at:

Kenneth R. Campbell, P.E.

Phone: 724-357-2646

Email: kencampbel@pa.gov

