

BRKEY 2837 DETOUR



BRKEY 2837 Detour:

The North Shore exit from the Upper Deck is closed and will be detoured through SR 0065 NB, take the West End Bridge/Chateau St/Western Ave exit, and turn right onto Western Ave, then turn right onto Allegheny Ave. The detour ends at the intersection of Allegheny Ave and Ridge Ave.

This assumes [BRKEY 801](#) remains open, which may not be possible when working on the joint at Bent SB7 and the longitudinal joint at Bent SB8; in these cases, see [BRKEY 2837 + 801](#) Detour.

Closure and Detour of [BRKEY 2837](#) RAMP U - SR 65 NB to Reedsdale St
 AADT: 9,400 vehicles per day
 Truck percentage: 7%

TRAC Services for Families

BRKEY 801 DETOUR



Closure and Detour of **BRKEY 801**
SR 65 NB Ramp from Ft Duquesne Bridge
AADT: 18,300 vehicles per day
Truck Percentage: 8%

BRKEY 801 Detour:
The SR 65 NB ramp from the Ft Duquesne Bridge is closed and will be detoured on **BRKEY 2837** ramp to North Shore from the Ft Duquesne Bridge onto Reedsdale St, turn right onto Fontella St, and turn left onto Ridge Ave. All traffic will continue traveling down Ridge Ave, and turn left onto Western Ave. The traffic will continue left towards the West End Bridge but turn right before the bridge to SR 0065 NB on ramp. The detour ends at the merge point.

This assumes **BRKEY 2837** remains open, which may not be possible when working on the joint at Bent SB7 and the longitudinal joint at Bent SB8; in these cases, see **BRKEY 2837 + 801** Detour.

<https://goo.gl/maps/YuowCSvw68oN3Y3Q7>



BRKEY 2837 + 801 DETOUR (PA 65 Traffic)



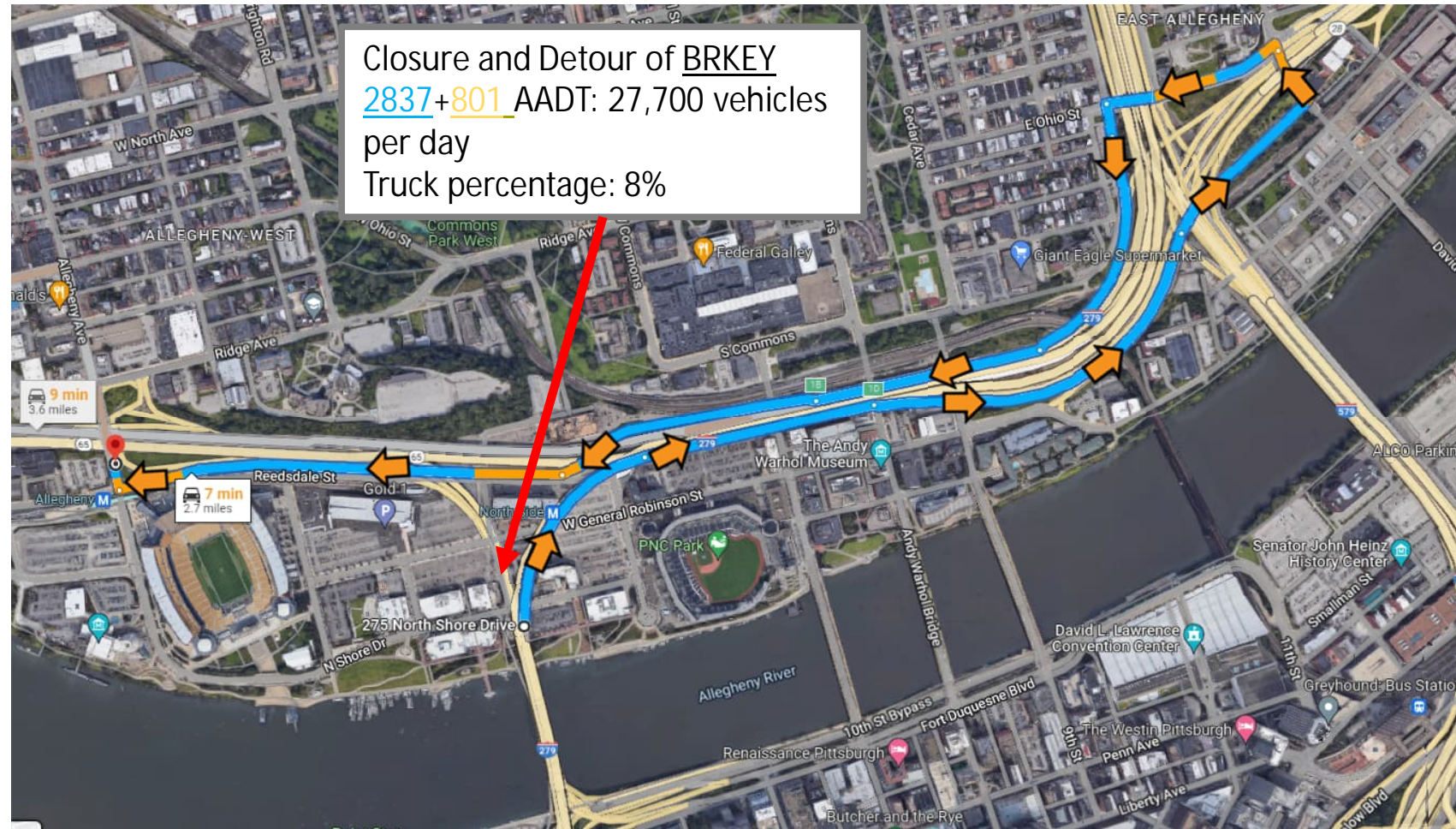
BRKEY 2837+801 Detour:

Both **BRKEY 801** and **BRKEY 2837** are closed to PA-65 and to North Shore (Reedsdale St).

PA-65 traffic will use I-279 North to Exit 3 Hazlett Street, to East St, "U-turning" and reentering I-279 South at Venture St ramp and to I-279 South and back to PA-65 North.



BRKEY 2837 + 801 DETOUR (Local Traffic)



BRKEY 2837+801 Detour:

Both **BRKEY 801** and **BRKEY 2837** are closed to PA-65 and to North Shore (Reedsdale St).

Local traffic destined to North Shore / Reedsdale St will be routed to Exit 1D towards SR 0028 NB, take the Chestnut St exit, turn left on East Ohio St, turn left on North Canal St, take the ramp on I-279 SB and finally use **BRKEY 1032** ramp to Reedsdale Street.



BRKEY 804
DETOUR
(Ridge Ave
Ramp to
West End
Bridge)



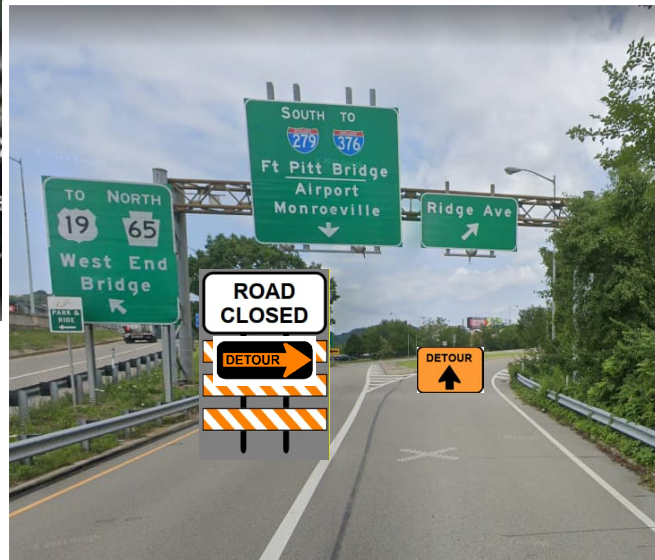
BRKEY 804 DETOUR (Ridge Ave Ramp to Ft Duq Bridge)



Closure and Detour of Ridge Ave ramp to Ft Duquesne Bridge
BRKEY 804
AADT: 4,200 vehicles per day
Truck percentage: 7%

BRKEY 804 Detour (Ridge Ave Ramp):

The Ridge Avenue ramp to the Fort Duquesne Bridge is closed and will be detoured through Ridge Ave, turn left onto Galveston Ave, turn left onto Western Ave, and continue straight to Chateau St. The traffic will turn left to get onto Beaver Ave, and take the ramp to merge onto SR 0065 SB. Once on SR 0065 SB, the traffic will continue straight onto I-279 SB and take Exit 1D towards SR 0028 NB. Once on SR 0028 NB, take the Chestnut St exit, turn left at the light, turn left on East Ohio St, turn left on North Canal St, take the ramp on I-279 SB, merge on I-279 SB, and follow signs for the Fort Duquesne Bridge.



<https://goo.gl/maps/BsGfAYo9CBYDzzeO7>

BRKEY 804 ALT (CAR) DETOUR



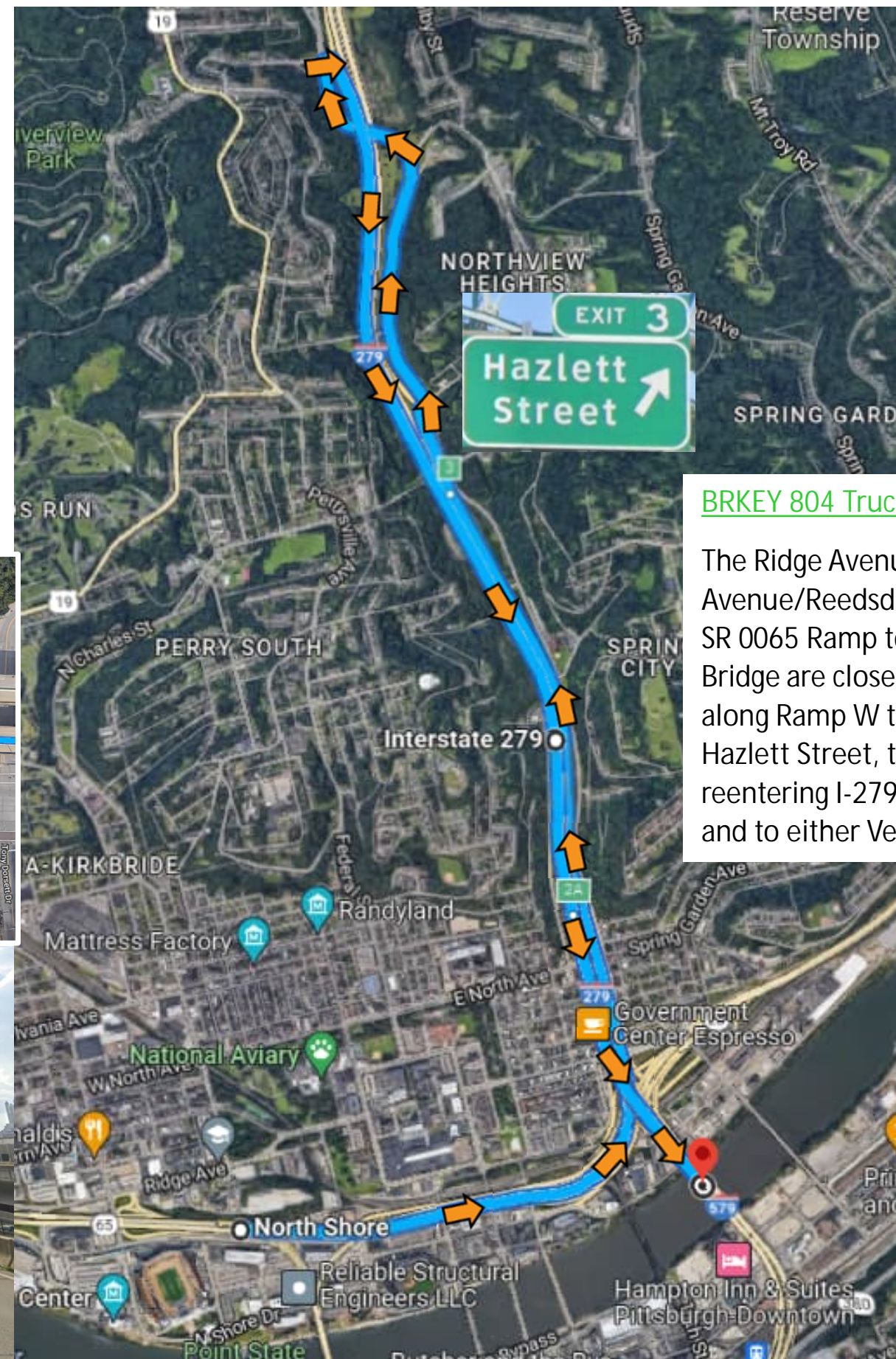
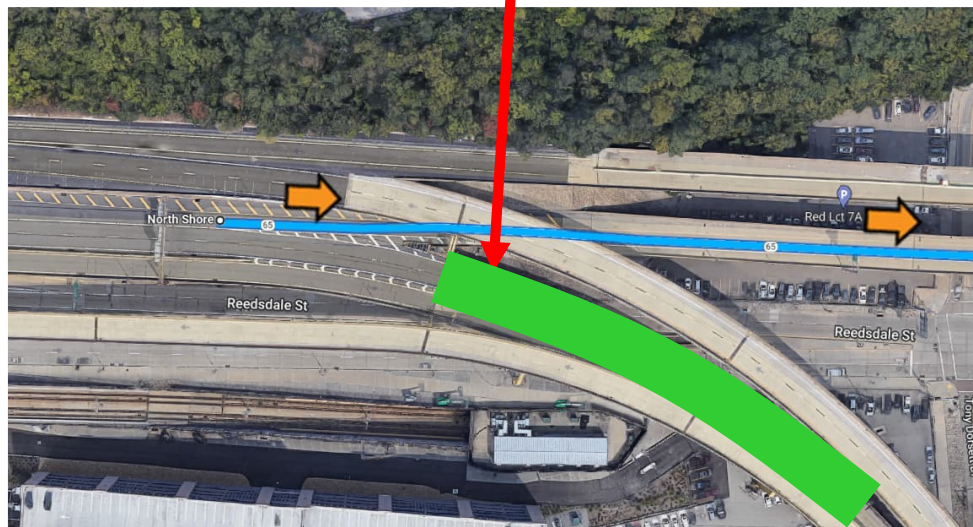
BRKEY 804 Alt (Car) Detour
 SR 65 SB Ramp to Ft Duquesne Bridge
 AADT: 18,200 vehicles per day
 Truck Percentage: 6%

BRKEY 804 Alt (Car) Detour:
 The SR 65 SB ramp to Ft Duquesne Bridge is closed and will be detoured through I-279 NB, take Exit 1D towards SR 0028, SR 0028 NB, take the Chestnut St exit, turn left on East Ohio St, turn left on North Canal St, take the ramp on I-279 SB, merge on I-279 SB, and follow signs for the Fort Duquesne Bridge.

<https://goo.gl/maps/19Nyb28JMB3i tzEo8>

BRKEY 804 TRUCK DETOUR

Closure and Detour of **BRKEY 804**
Ridge Ave Ramp and SR 0065 Ramp
to Ft Duquesne Bridge
AADT: 18,200 vehicles per day
Truck percentage: 7%



BRKEY 804 Truck Detour:

The Ridge Avenue/Allegheny Avenue/Reedsdale Street ramps and the SR 0065 Ramp to the Fort Duquesne Bridge are closed and will both continue along Ramp W to I-279 North to Exit 3 Hazlett Street, to East St, "U-turning" and reentering I-279 South at Venture St ramp and to either Veterans Bridge or Ft Duq Br.



RIDGE AVE RAMP DETOUR

Closure and Detour of Ridge Ave ramp to Ft Duquesne Bridge [BRKEY 804](#)
AADT: 8,121 vehicles per day
Truck percentage: 7%

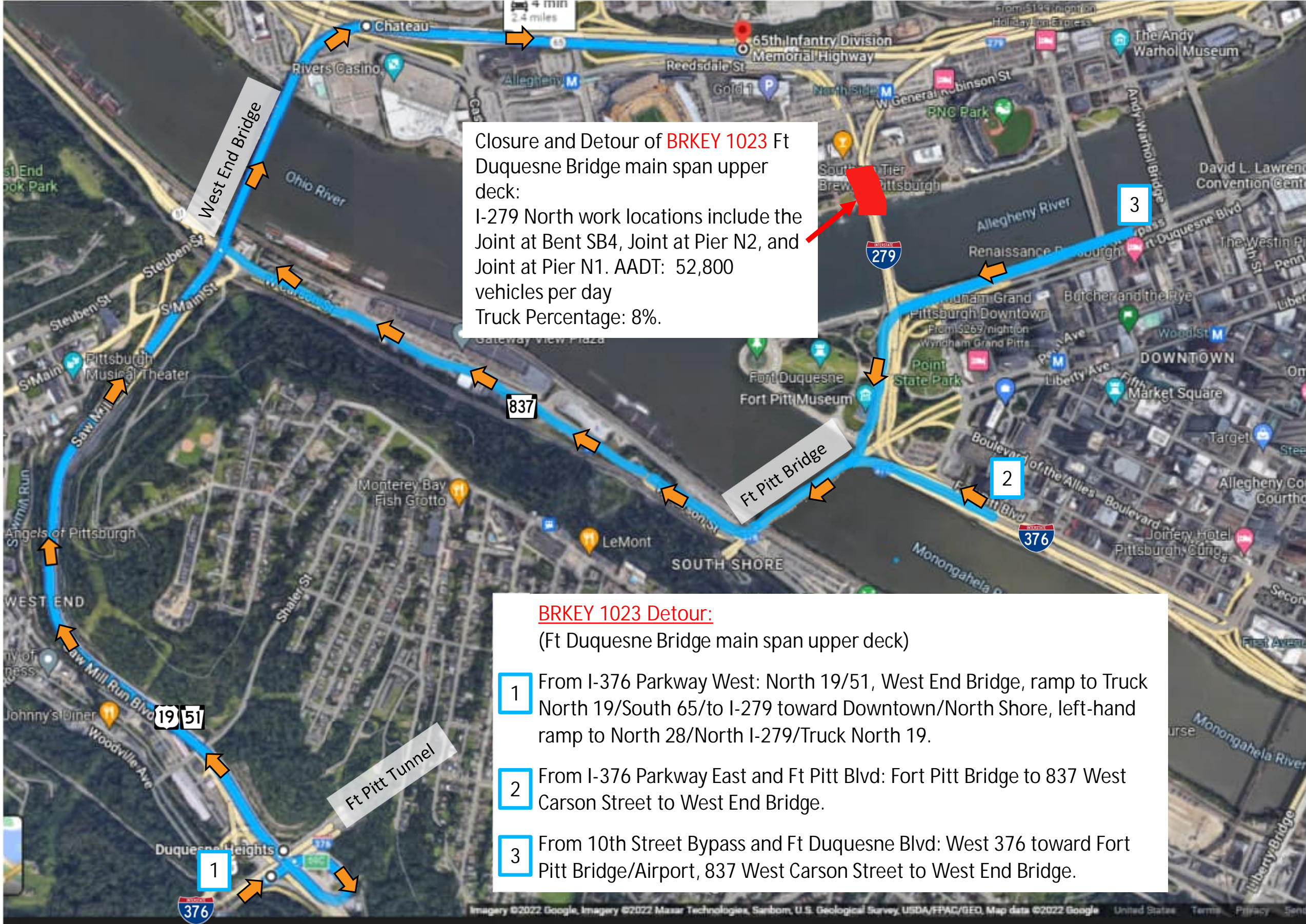


[BRKEY 804 Detour:](#)

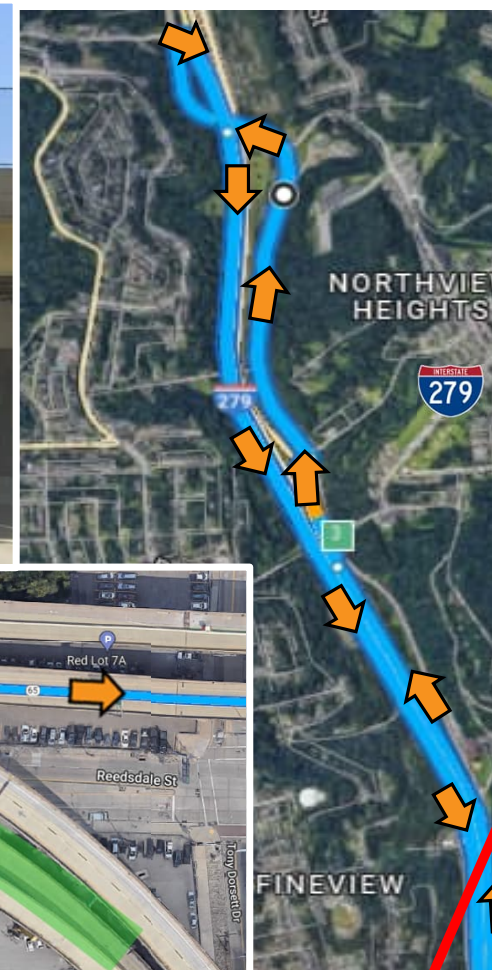
The Ridge Avenue ramp to the Fort Duquesne Bridge is closed and will have an alternate detour through Ridge Ave, turn right onto West Commons, left onto South Commons, left onto East Commons, right onto East Ohio St, turn right onto the ramp to I-279 South, merge on I-279 SB, and follow signs for the Fort Duquesne Bridge.



**BRKEY 1023
(Upper Deck)
DETOUR**



BRKEY 43172 (Lower Deck) DETOUR



Closure and Detour of **BRKEY 43172:**
(Ft Duquesne Bridge main span lower deck)

I-279 South work locations include the joint at Bent SB4, Joint at Pier N2, and Pier N1. AADT: 43,400 vehicles per day
Truck Percentage: 8%.

It is a rerouting of **BRKEY 804** and **BRKEY 42749** which carry 18,200 and 25,200 AADT respectively.

From PA-65 Southbound:

I-279 North Exit 3 Hazlett Street, to East St, "U-turning" and reentering I-279 South at Venture St then I-279 S to I-579/ Veterans Bridge.

From I-279 Southbound or PA-28 Southbound I-579/ Veterans Bridge.
Exit 69C

