

WELCOME

Rostraver Township
Pedestrian Bridge Replacement
over Interstate 70
Westmoreland County, PA

VIRTUAL PROJECT PRESENTATION

MICHAEL BAKER INTERNATIONAL DECEMBER 12, 2023



PRESENTATION OUTLINE

- Impacted Stakeholders
- Project Location
- Project Overview
- Existing Project Condition Photos
- Proposed Design Plans / Construction Traffic Control
- Anticipated Project Milestones
- Questions/Comments

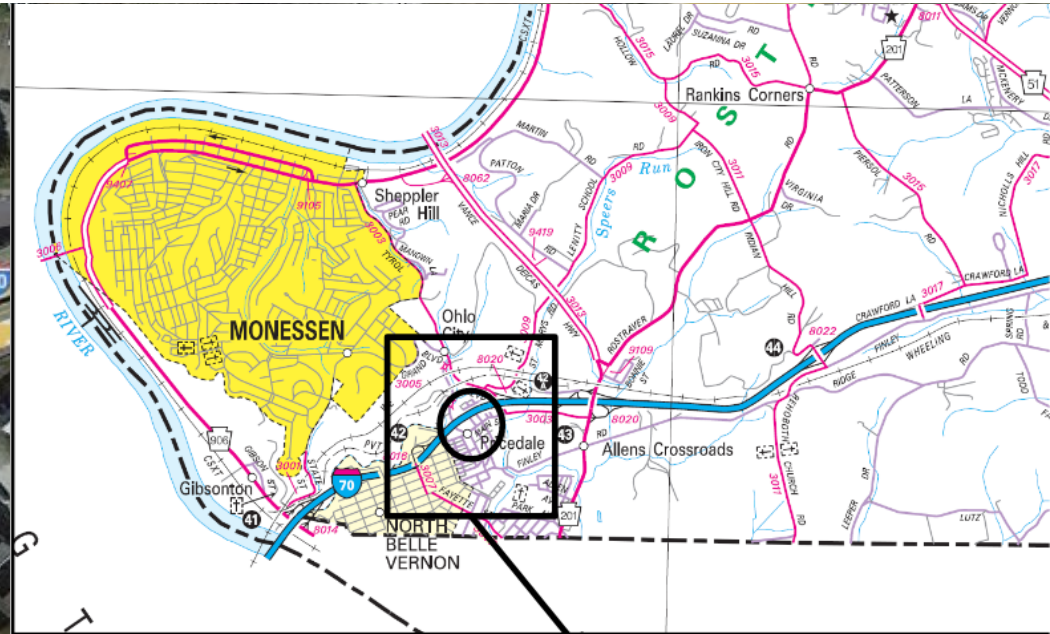
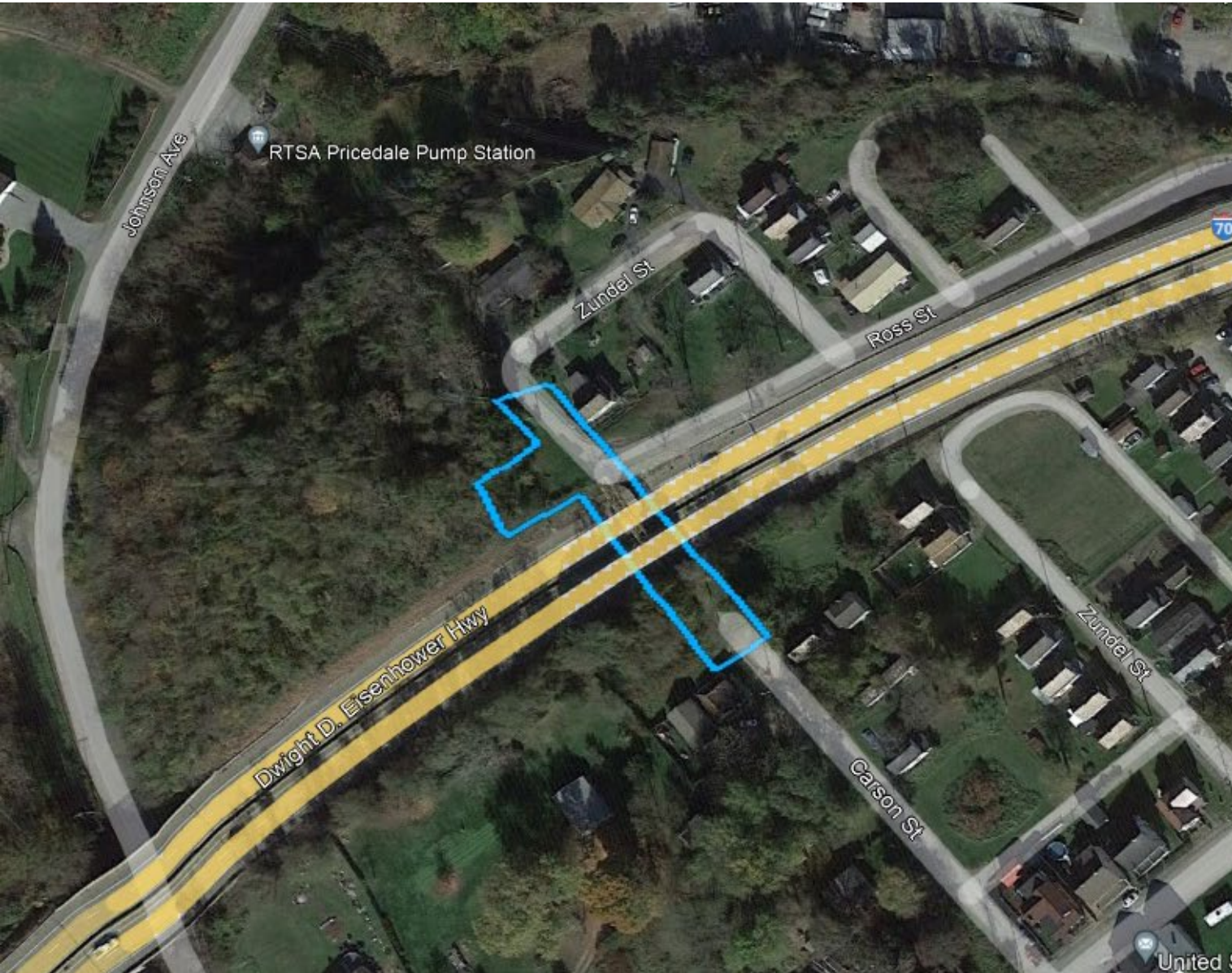


IMPACTED STAKEHOLDERS

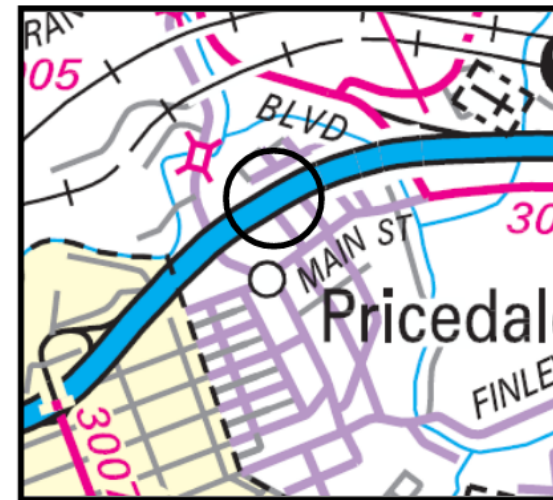
- Westmoreland County
 - Rostraver Township
 - Belle Vernon Area School District
- Emergency Services
- Pennsylvania Legislature
- U.S. Legislature



PROJECT LOCATION



**Pedestrian Walkway
over
I-70**



PROJECT OVERVIEW

Project Purpose

To construct a reliable crossing for pedestrians over I-70 that will provide safe and efficient access across the interstate to serve local residents and maintain connectivity.

A pedestrian detour will be in place during construction.

I-70 will have rolling restrictions when hoisting out the existing bridge and hoisting in the new bridge.

Planned Results

- On-line replacement of existing through truss bridge with similar through truss bridge.
- Vertical clearance improvement over I-70 to 17'-6" or greater.
- ADA compliant access on each end.



EXISTING PROJECT CONDITION PHOTOS



EXISTING PEDESTRIAN BRIDGE VIEW LOOKING
NORTHWEST



EXISTING PEDESTRIAN BRIDGE VIEW LOOKING SOUTHEAST



EXISTING PROJECT CONDITION PHOTOS



EXISTING PEDESTRIAN BRIDGE VIEW LOOKING
SOUTHWEST



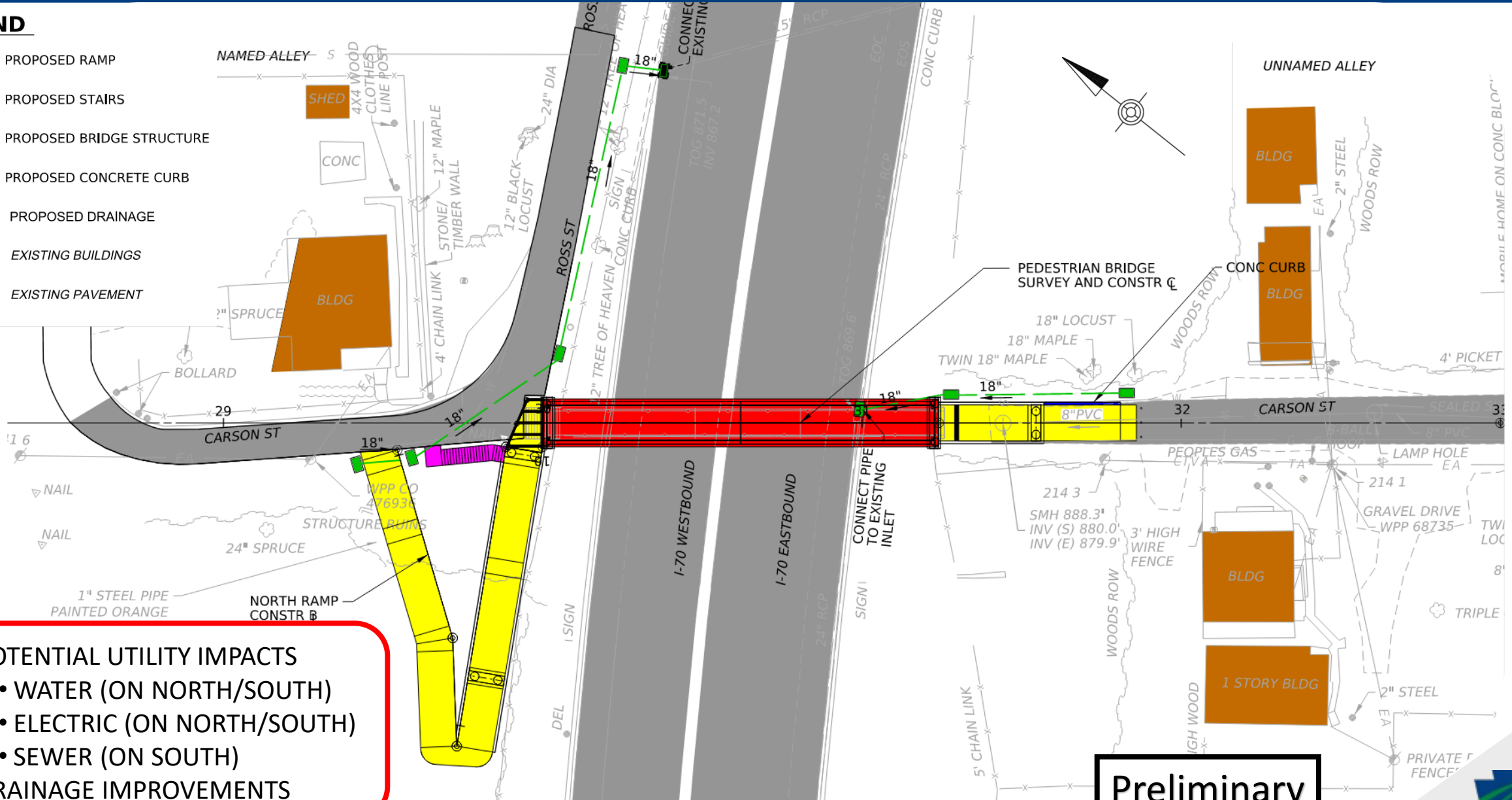
EXISTING PEDESTRIAN BRIDGE VIEW LOOKING SOUTHEAST



PROPOSED DESIGN PLANS

LEGEND

- PROPOSED RAMP
- PROPOSED STAIRS
- PROPOSED BRIDGE STRUCTURE
- PROPOSED CONCRETE CURB
- PROPOSED DRAINAGE
- EXISTING BUILDINGS
- EXISTING PAVEMENT

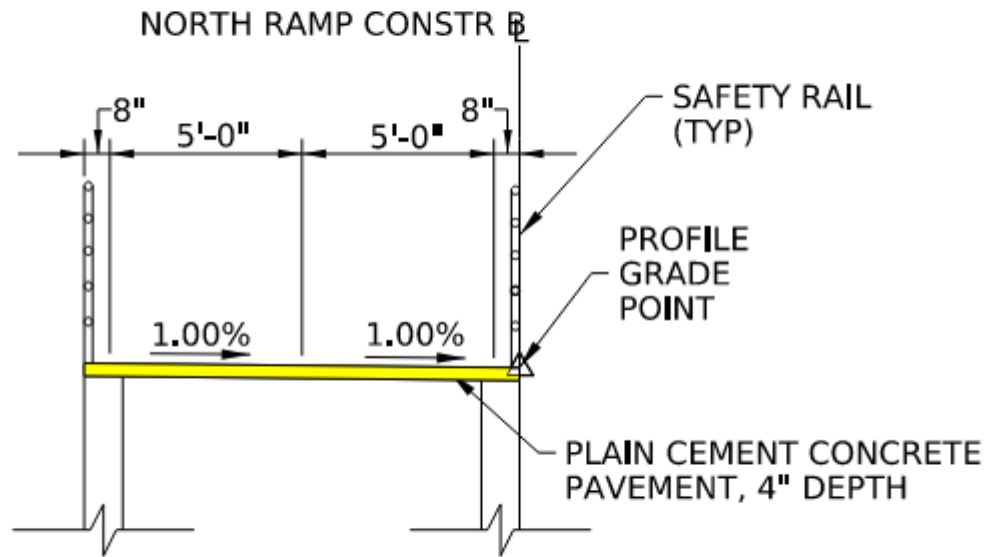


- POTENTIAL UTILITY IMPACTS
 - WATER (ON NORTH/SOUTH)
 - ELECTRIC (ON NORTH/SOUTH)
 - SEWER (ON SOUTH)
- DRAINAGE IMPROVEMENTS

Preliminary

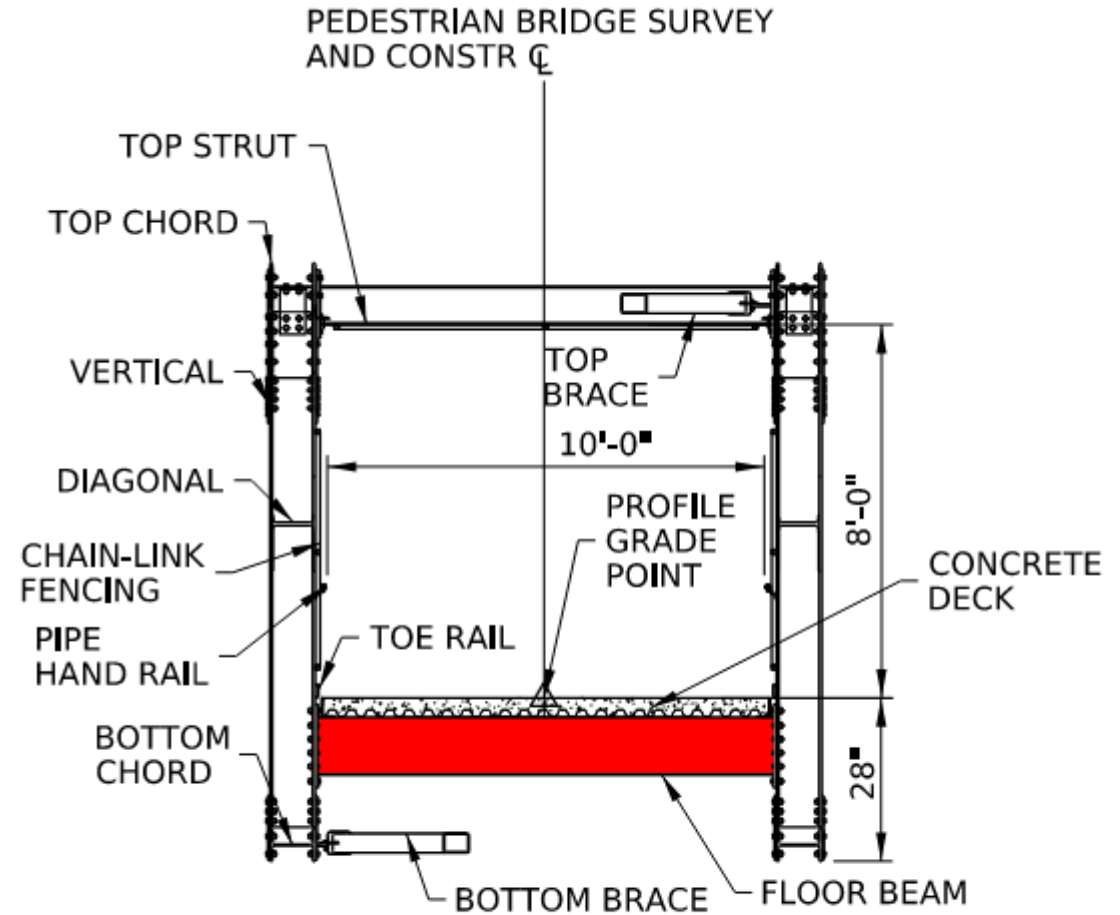


PROPOSED DESIGN PLANS



NORTH RAMP TYPICAL SECTION

STA 10+00.00 TO STA 11+06.48
NOT TO SCALE



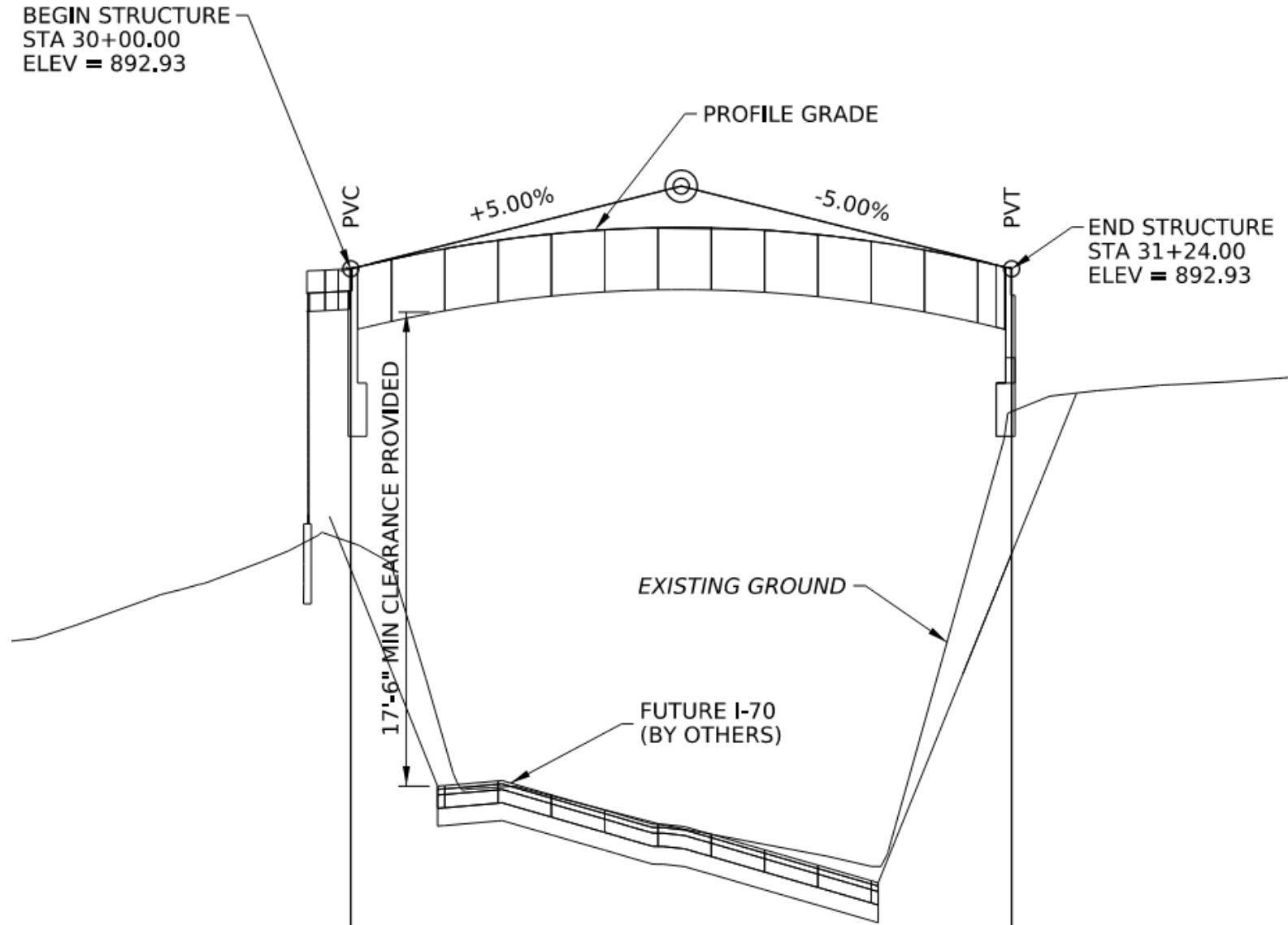
PEDESTRIAN BRIDGE STRUCTURE TYPICAL SECTION

STA 30+00.00 TO STA 31+24.00
NOT TO SCALE

Preliminary



PROPOSED DESIGN PLANS



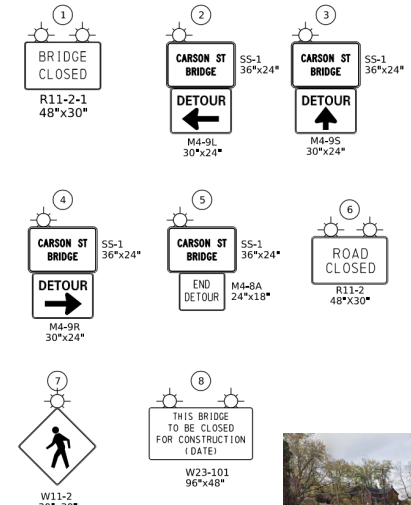
Preliminary



CONSTRUCTION TRAFFIC CONTROL

- DETOUR
 - ZUNDEL ST
 - ROSS ST
 - MAIN ST
 - CARSON ST
- NIGHT-TIME ROLLING CLOSURE
 - I-70

DISTRICT	COUNTY	ROUTE	SECTION	SHEET		
12-0	WESTMORELAND	0070	01P	4 OF 7		
ROSTRAVER TOWNSHIP						
REV NO	REVISIONS			DATE	BY	APPD



- LEGEND**
- ← → PEDESTRIAN DETOUR ROUTE
 - (A) ● SIGN LOCATION (TYPE B POST)
 - (A) II TYPE III BARRICADE
 - ☀ TYPE B LIGHT
 - ▨ WORK AREA
 - ▣ CONTRACTOR STAGING AREA



PLANS PREPARED BY
MICHAEL BAKER INTERNATIONAL
MOON TOWNSHIP, PA

Preliminary

TRAFFIC CONTROL PLAN
PEDESTRIAN DETOUR PLAN



ANTICIPATED PROJECT MILESTONES

Final Design: Summer/Fall 2024.

Right-of-Way Clearance: Summer/Fall 2024

Advertise/Bid Project: Fall/Winter 2024

Construction

Material Procurement: 12 months

Start: Spring/Summer 2026

Duration: 3-6 months



THANK YOU FOR YOUR TIME AND ATTENTION!

QUESTIONS/COMMENTS

Contact

Project Manager

Sean P. Sepe, PE

724.439.7322

ssepe@pa.gov

Press Officer

Laina Aquiline

724.415.3748

laquiline@pa.gov

FOLLOW PENNDOT



www.PennDOT.pa.gov



www.DMV.pa.gov



[PennsylvaniaDepartmentofTransportation](https://www.facebook.com/PennsylvaniaDepartmentofTransportation)



[PennDOTNews](https://twitter.com/PennDOTNews)



[PennsylvaniaDOT](https://www.instagram.com/PennsylvaniaDOT)



[PennDOTSec](https://www.facebook.com/PennDOTSec)



[/company/PennDOT](https://www.linkedin.com/company/PennDOT)



[PennDOTSec](https://twitter.com/PennDOTSec)



[PennsylvaniaDOT](https://www.youtube.com/PennsylvaniaDOT)