

PROJECT OVERVIEW

The purpose of the Potters Mills Gap (PMG) Transportation Project is to improve safety, reduce congestion, and alleviate access concerns along the section of Route 322 from the Centre County/Mifflin County line to west of the Route 322/Route 144 intersection at Potters Mills.

For construction purposes, the PMG Transportation Project has been divided into three construction sections (B04, B05 and B06) as shown on the inset map.

Construction began in March 2015 on Section B04, a new bridge over Route 322, and was completed in September 2015.

Section B05 construction started August 2016. The remaining section, Section B06, is now in design with construction anticipated to begin in Spring 2018. Section B05 and the Section B04 bridge will complete the Sand Mountain Road interchange. Section B06 will extend the four-lane limited access Route 322 to a new interchange west of Potters Mills, and will provide a local access road from Potters Mills to Sand Mountain Road.

The project needs include:

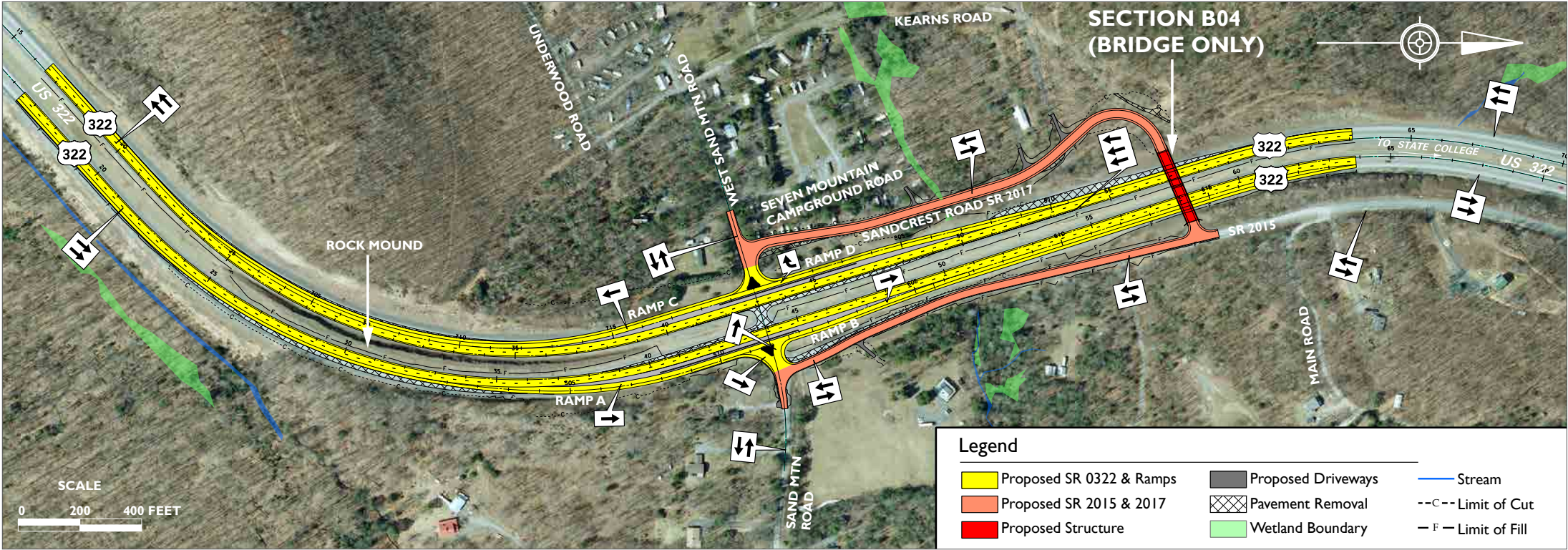
- Safety concerns exist in the project area between Potters Mills and Sand Mountain Road.
- Congestion exists in the project area between Potters Mills and Sand Mountain Road.
- Access issues exist at project area intersections and adjacent properties.

Project Overview

Construction Sections B04 /B05

Construction Section B06

Contact Us



Section B04 Bridge

Section B04 and B05 | Sand Mountain Road Interchange

- A full interchange at Sand Mountain Road will eliminate the existing at-grade intersection of Sand Mountain Road and Route 322.
- Four new at-grade ramps will be constructed in a tight diamond configuration adjacent to existing Route 322.
- The interchange incorporates a connection with Sandcrest Road that was developed with public input and support and considerations for safety, engineering and environmental effects.
- The bridge for the interchange was completed on September 23, 2015.
- The reconstructed Sandcrest Road and rehabilitated Route 2015 will connect the ramp terminals at Sand Mountain Road with the overhead bridge constructed in Section B04.
- A rock mound located in the Route 322 median, east of the Sand Mountain Road intersection, has been removed.
- Construction Cost for Section B05: \$8,676,545
- Final Construction Cost for Section B04: \$1,944,805

Section B06

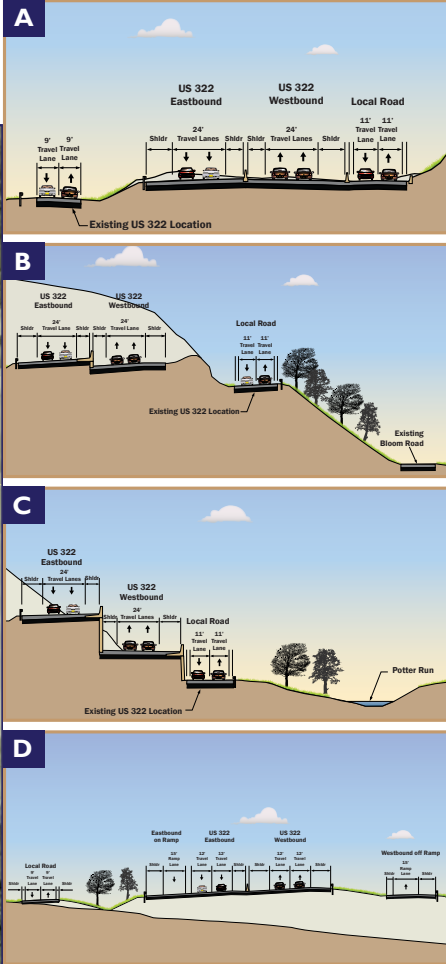
Project Overview



Legend

- Proposed SR 0322 & Ramps
- Proposed SR 2015 & Crowfield Rd
- Proposed Structure
- Proposed Driveways & Township Roads
- Pavement Removal
- Wetland Boundary
- Stream
- Limit of Cut
- Limit of Fill

SCALE
0 200 400 FEET



Construction Sections B04 /B05

Construction Section B06

Section B06 | Route 322 and Western Interchange

- Section B06 is currently in Design.
- Potters Mills Interchange is to be constructed to the west of the existing Route 322 intersection with Route 144.
- Creates a local road connection between Potters Mills and Sand Mountain Road.
- Potter Run arch culvert will be removed and replaced with a new bridge.
- A roundabout will be constructed to connect the western interchange of the newly aligned 322 to the local roads. This will include service roads that provide connections to Wild Turkey Drive, Coulter Lane, Miller Road and other properties losing direct access to Route 322.
- The at-grade intersection of Decker Valley Road/Crowfield Road with Route 322 will be eliminated.
- Estimated Construction Start: Spring 2018
- Estimated Construction Cost: \$100,000,000

ROUNDBOUT INFORMATION:

[VIEW BROCHURE](#)

[WATCH VIDEO](#)

Contact Us



**Project
Overview**

**Construction
Sections
B04 /B05**

For more information, contact:

CRAIG SATTESAHN

Pennsylvania Department of Transportation,
Engineering District 2-0
Project Manager
csattesahn@pa.gov
814-765-0678

MARLA FANNIN

Pennsylvania Department of Transportation,
Engineering District 2-0
Community Relations Coordinator
mfannin@pa.gov
814-765-0423

**Construction
Section
B06**

**Contact
Us**