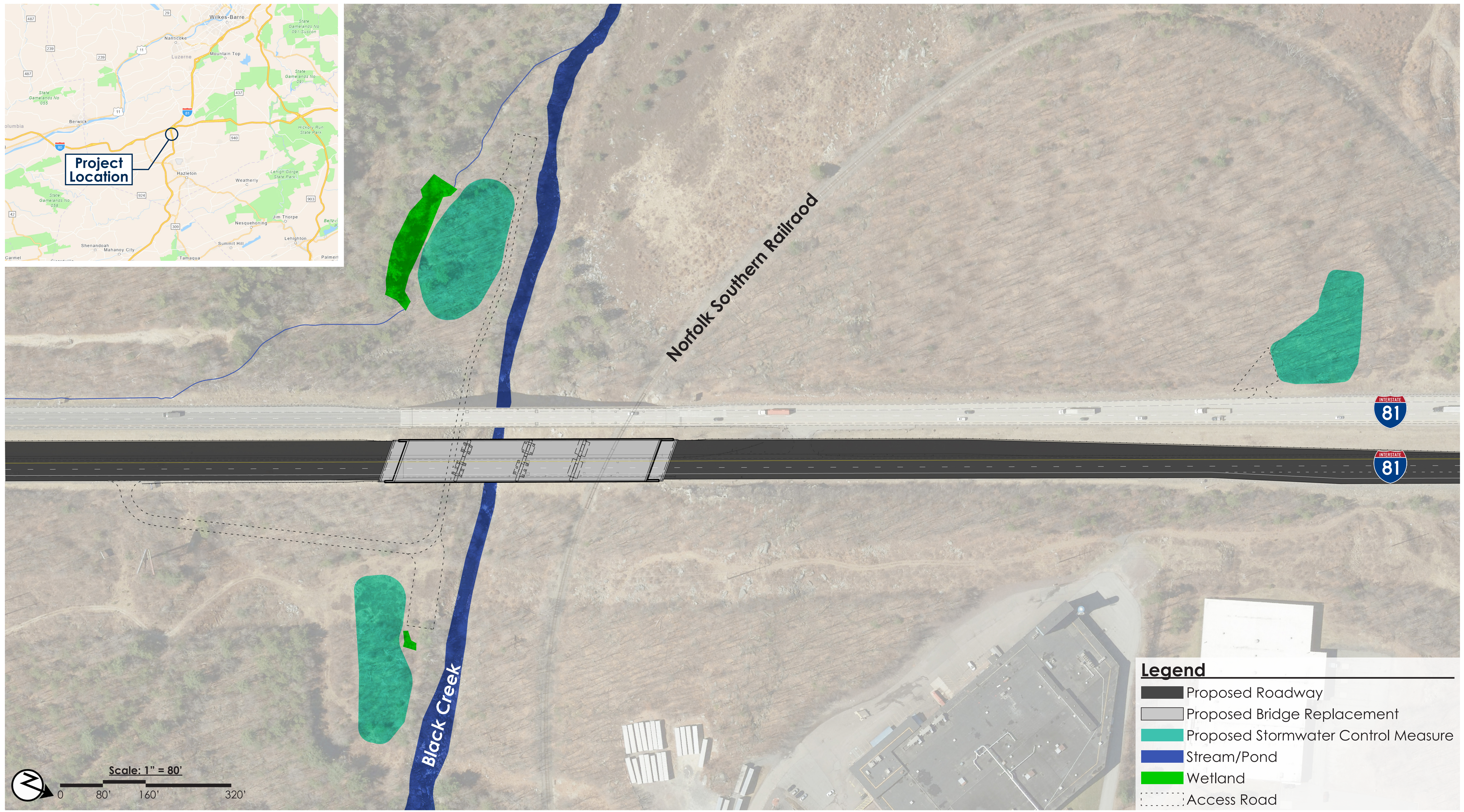
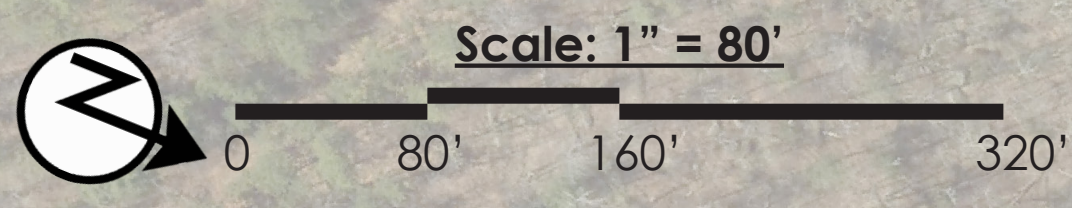


S.R. 0081 Northbound over Railroad and Black Creek Bridge Replacement - PRELIMINARY ROADWAY PLAN



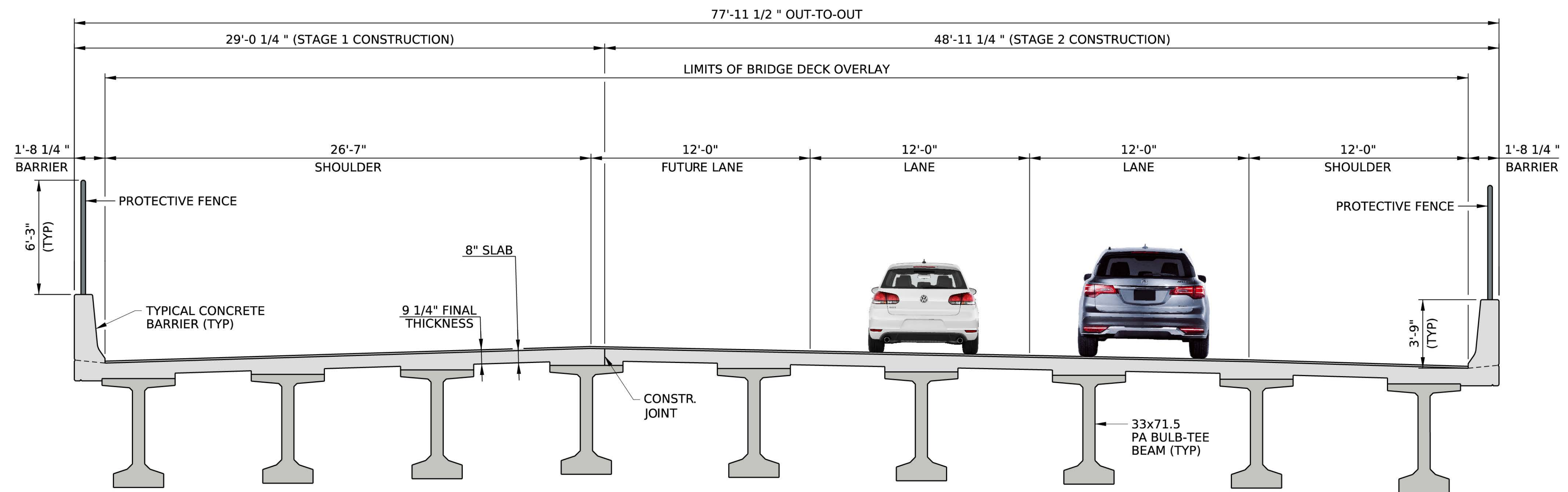
Legend

- Proposed Roadway
- Proposed Bridge Replacement
- Proposed Stormwater Control Measure
- Stream/Pond
- Wetland
- Access Road

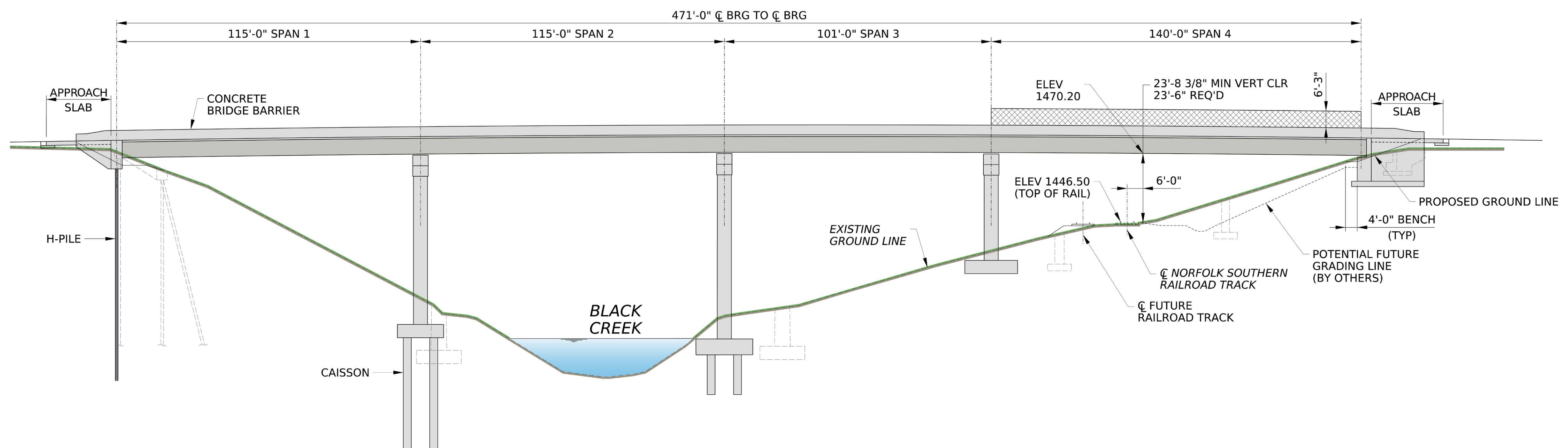


S.R. 0081 Northbound over Railroad and Black Creek Bridge Replacement - PRELIMINARY BRIDGE TYPICAL SECTION and ELEVATION

TYPICAL SECTION VIEW

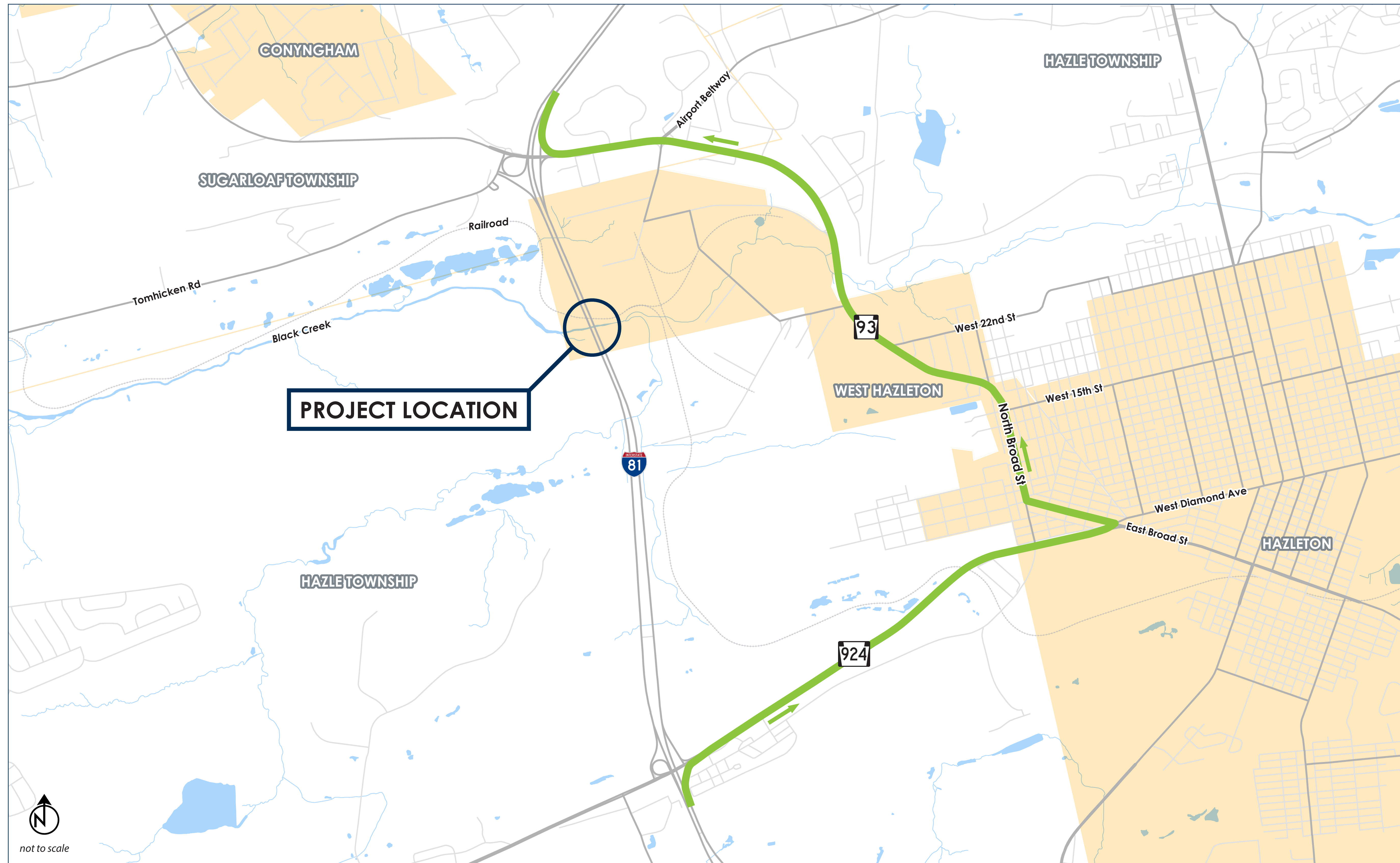


ELEVATION VIEW



S.R. 0081 Northbound over Railroad and Black Creek Bridge Replacement - PRELIMINARY CONSTRUCTION DETOUR

S.R. 0081 Northbound Short-term Detour - 6.0 miles



What is Section 4(f)?

Section 4(f) refers to the original section within the U.S. Department of Transportation (DOT) Act of 1966.

Section 4(f) provides consideration to publicly owned park and recreation lands, wildlife and waterfowl refuges, and any publicly or privately owned historic sites listed on or eligible for listing on the National Register of Historic Places (NRHP). Section 4(f) applies to projects that receive funding from or require approval by an agency of the U.S. DOT.

How does Section 4(f) apply to this project?

One Section 4(f) resource, the former Lehigh Valley Railroad (the current Norfolk Southern Railroad) has been identified within the project area.

Impacts to Sections 4(f) properties:

Lehigh Valley Railroad

The former Lehigh Valley Railroad (currently the Norfolk Southern Railroad) is eligible for listing in the National Register of Historic Places (NRHP) under the jurisdiction of the Pennsylvania State Historic Preservation Office (PA SHPO).

In coordination with the PA SHPO, PennDOT has determined that the project will have no effect on the NRHP eligible, Section 4(f) resource.

Public Feedback

The Comment form provides a question specific to Section 4(f) and gives you the opportunity to provide comments and feedback regarding the proposed project and the project area Section 4(f) resource.



Looking west along the railroad line towards the I-81, Section 361 bridge