



Bridge Street Bridge over Meshoppen Creek

Meshoppen Borough, Wyoming County, PA



Alternative 1

- Rehabilitates existing structure.
- Sidewalk will be reopened.
- No change to existing underclearance or vertical restriction for trucks.
- All traffic will be detoured onto Canal Street during construction.



Existing Bridge Street Bridge

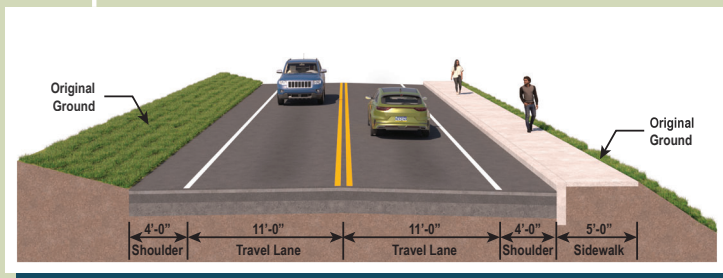


Bridge Street Bridge over Meshoppen Creek

Meshoppen Borough, Wyoming County, PA



Alternative 2



Canal Street - Alternative 2

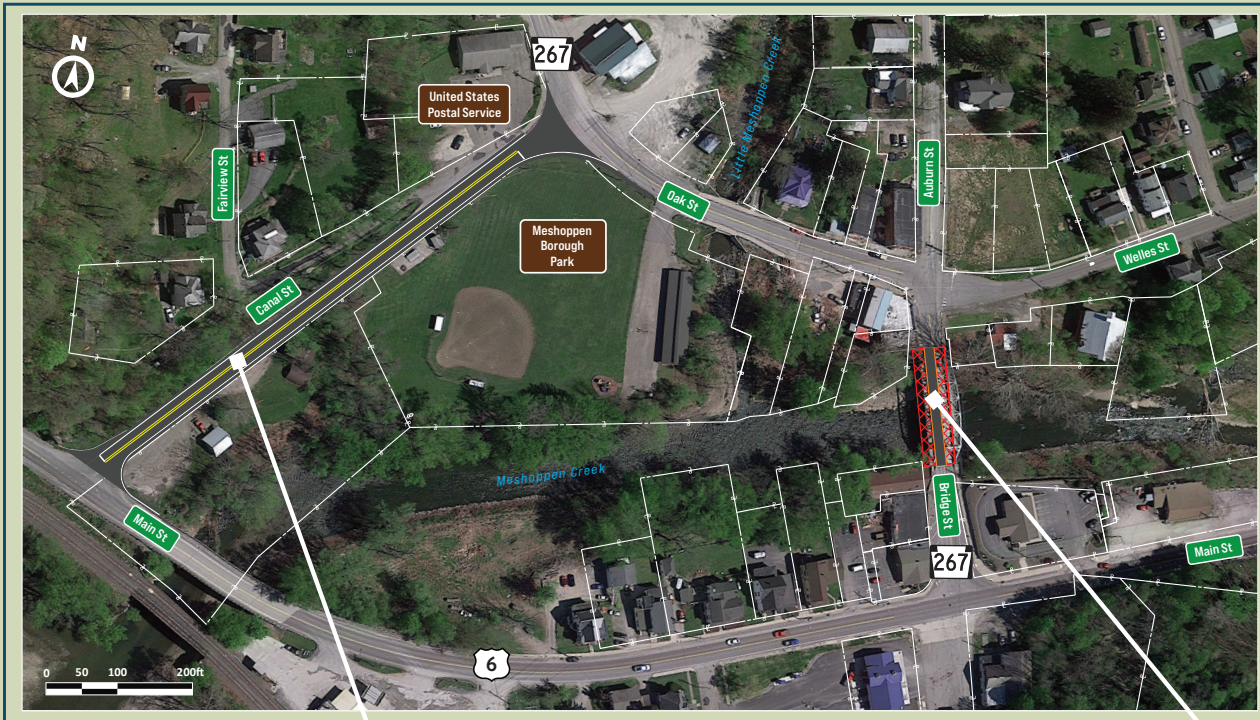
Features	Alternative 2	Alternative 3
Decommissions and removes the existing SR 267 Structure	X	X
Reconstructs Canal Street to meet current design standards and re-designates Canal Street as PennDOT Route SR 267	X	X
Sidewalk along Canal Street	X	
Pedestrian Bridge over Meshoppen Creek in location of existing SR 267 Structure		X

Alternative 2 & 3 Comparison Chart

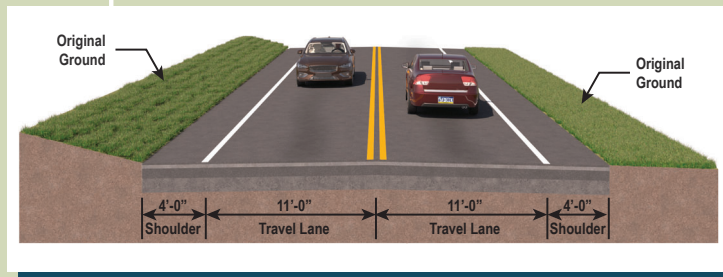


Bridge Street Bridge over Meshoppen Creek

Meshoppen Borough, Wyoming County, PA



Alternative 3



Canal Street - Alternative 3

Features	Alternative 2	Alternative 3
Decommission and removes the existing SR 267 Structure	X	X
Reconstructs Canal Street to meet current design standards and re-designates Canal Street as PennDOT Route SR 267	X	X
Sidewalk along Canal Street	X	
Pedestrian Bridge over Meshoppen Creek in location of existing SR 267 Structure		X

Alternative 2 & 3 Comparison Chart



Pedestrian Bridge - Alternative 3

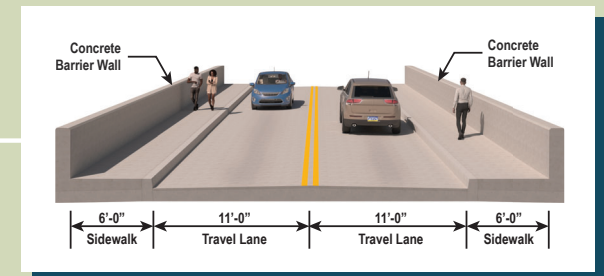


Bridge Street Bridge over Meshoppen Creek

Meshoppen Borough, Wyoming County, PA



Alternative 4



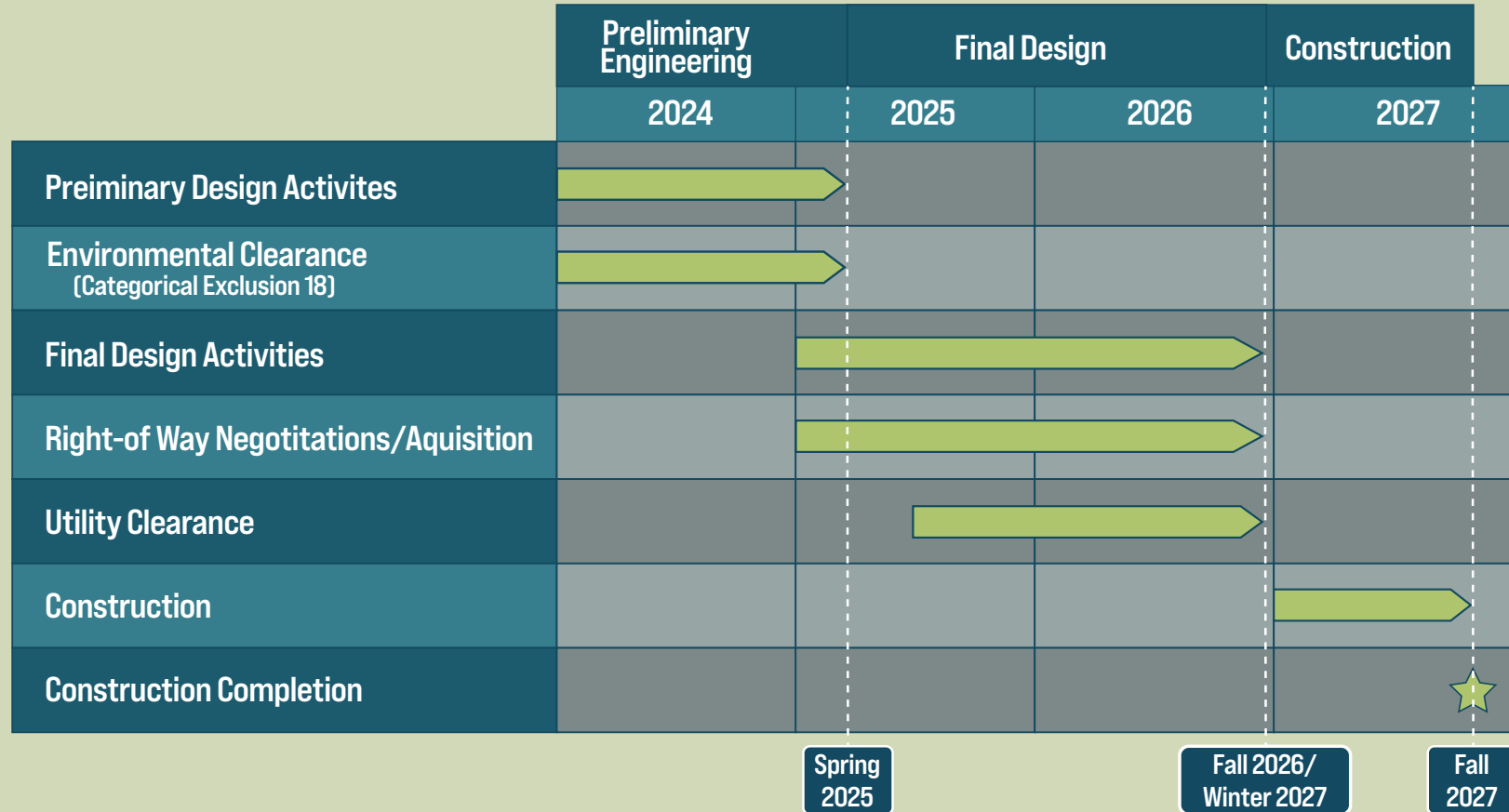
SR 0267 (Bridge) - Alternative 4

- Reconstruction of the existing bridge crossing with a two-span structure.
- Alternative will restore the truck route across the bridge, eliminating the existing vertical restriction.
- All traffic will be detoured onto Canal Street during construction.



Bridge Street Bridge over Meshoppen Creek

Meshoppen Borough, Wyoming County, PA



Project Schedule as of November 2023



Bridge Street Bridge over Meshoppen Creek

Meshoppen Borough, Wyoming County, PA

Alternatives 1 & 4:

- SR 267 bridge closed to vehicular and pedestrian traffic.
- 0.5 mile detour will utilize Oak Street, Canal Street, and Main Street.

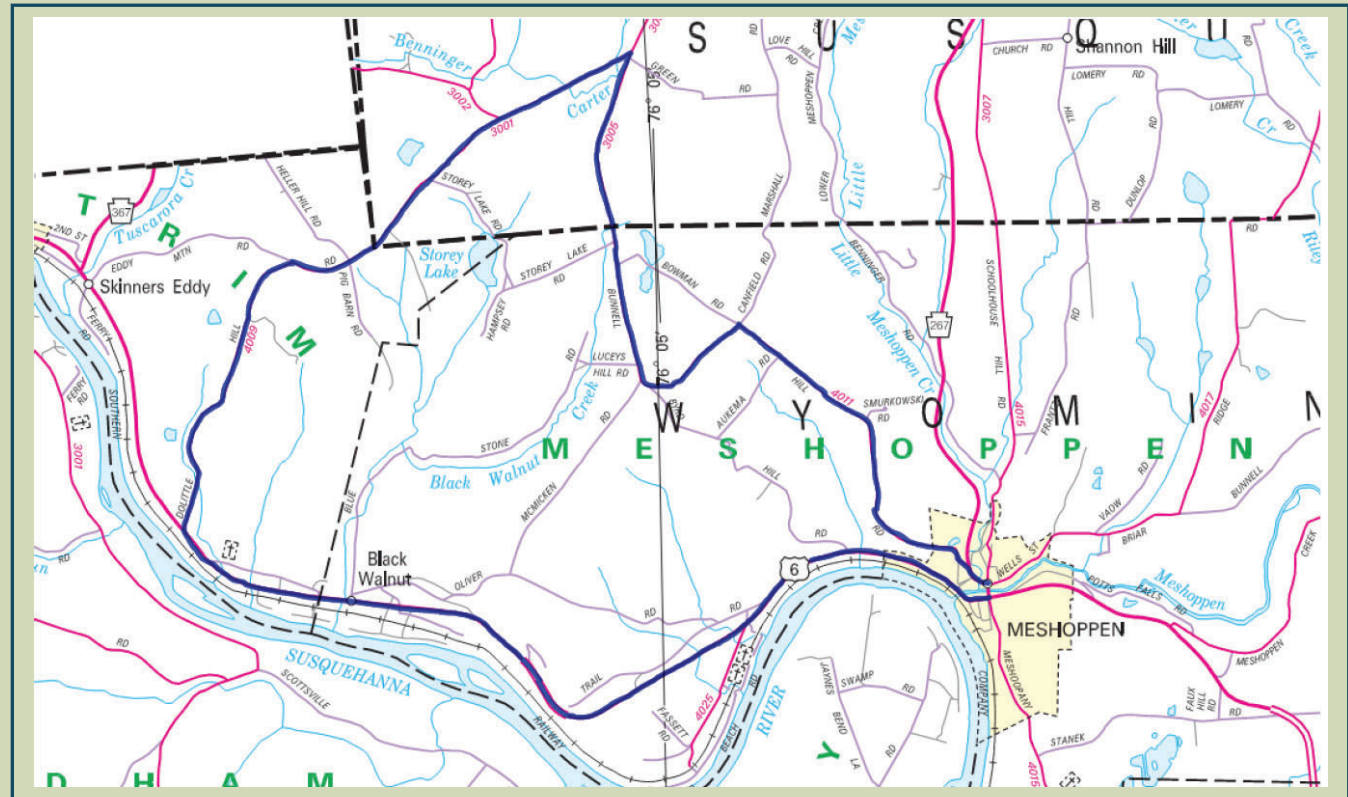
Alternatives 2 & 3:

Option 1:

- Keep one direction open on Canal Street and detour opposite direction during construction.
- Cars will continue to utilize SR 267 (Bridge Street) Bridge during construction while a separate truck detour will be provided until reconstruction of Canal Street is completed.

Option 2:

- Temporarily close Canal Street during construction.
- 0.5 mile car detour utilizing Oak Street, Bridge Street, and Main Street.
- 14.6 mile truck detour utilizing Oak Street, Rattlesnake Hill Road, Doolittle Hill Road, and Roosevelt Highway/Main Street.



Potential Alternative 2 and 3 Truck Detour