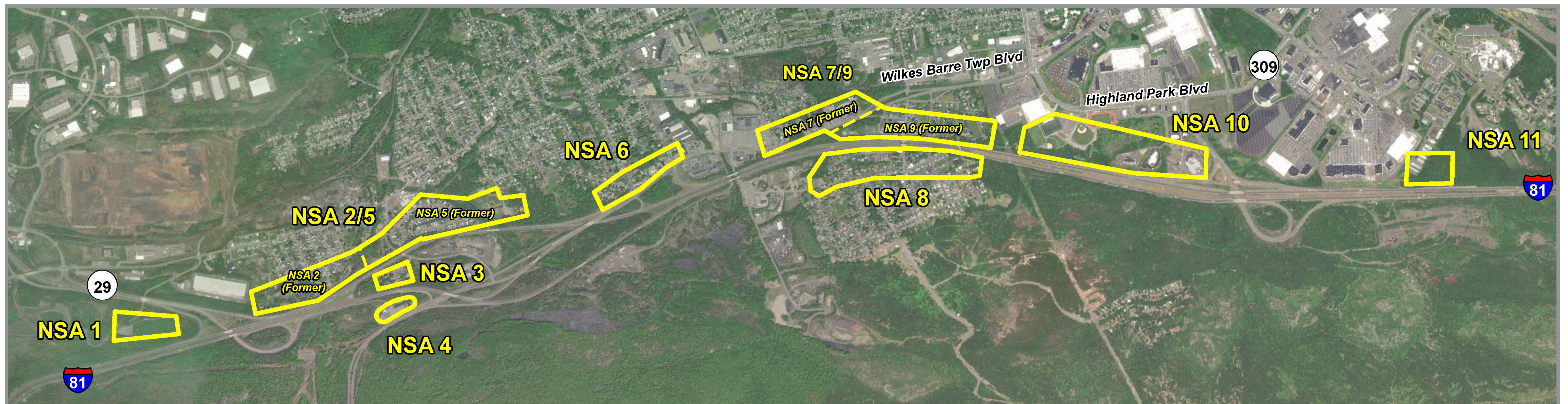


I-81 SECTION 316 ASHLEY TO ARENA: Noise Analysis

The project was divided into Noise Sensitive Areas (NSAs)

Based on land use, geography, and traffic volumes



Preliminary Stage:

REASONABLE ACCESS TO PROPERTIES IN ACTIVE CONSTRUCTION ZONES SHALL BE MAINTAINED CONSISTED WITH HIGHWAY CONTRUCTION AND PUBLIC SAFETY NEEDS.