

ROUTE 309 (WEST END BOULEVARD) BRIDGE REPLACEMENTS



STAKEHOLDER MEETING

APRIL 4, 2024

AGENDA

- ✓ Project Location
- ✓ Project Purpose
- ✓ Existing Conditions
- ✓ Proposed Improvements
- ✓ Traffic Control During Construction
- ✓ Project Schedule
- ✓ Questions



PROJECT LOCATION



PROJECT PURPOSE

The purpose of the project is to provide safe and efficient crossings of Morgan Creek and Beaver Run on SR 309 (West End Blvd.).



MORGAN CREEK PROJECT NEED

The existing bridge is in overall poor condition and the following deficiencies are present:

- The bridge abutments are in poor condition and exhibit full height vertical cracks and spalls.
- The bridge superstructure is in fair condition with numerous beams having hairline cracking, heavy efflorescence, large spalls, along with exposed and rusted reinforcement.



Morgan Creek Abutment & Beam Cracks



BEAVER RUN PROJECT NEED

The existing bridge is in overall poor condition and the following deficiencies are present:

- The bridge abutments are in poor condition and exhibit full height vertical cracks and spalls.
- The bridge superstructure is in fair condition with numerous beams having hairline cracking, heavy efflorescence, large spalls, along with exposed and rusted reinforcement.

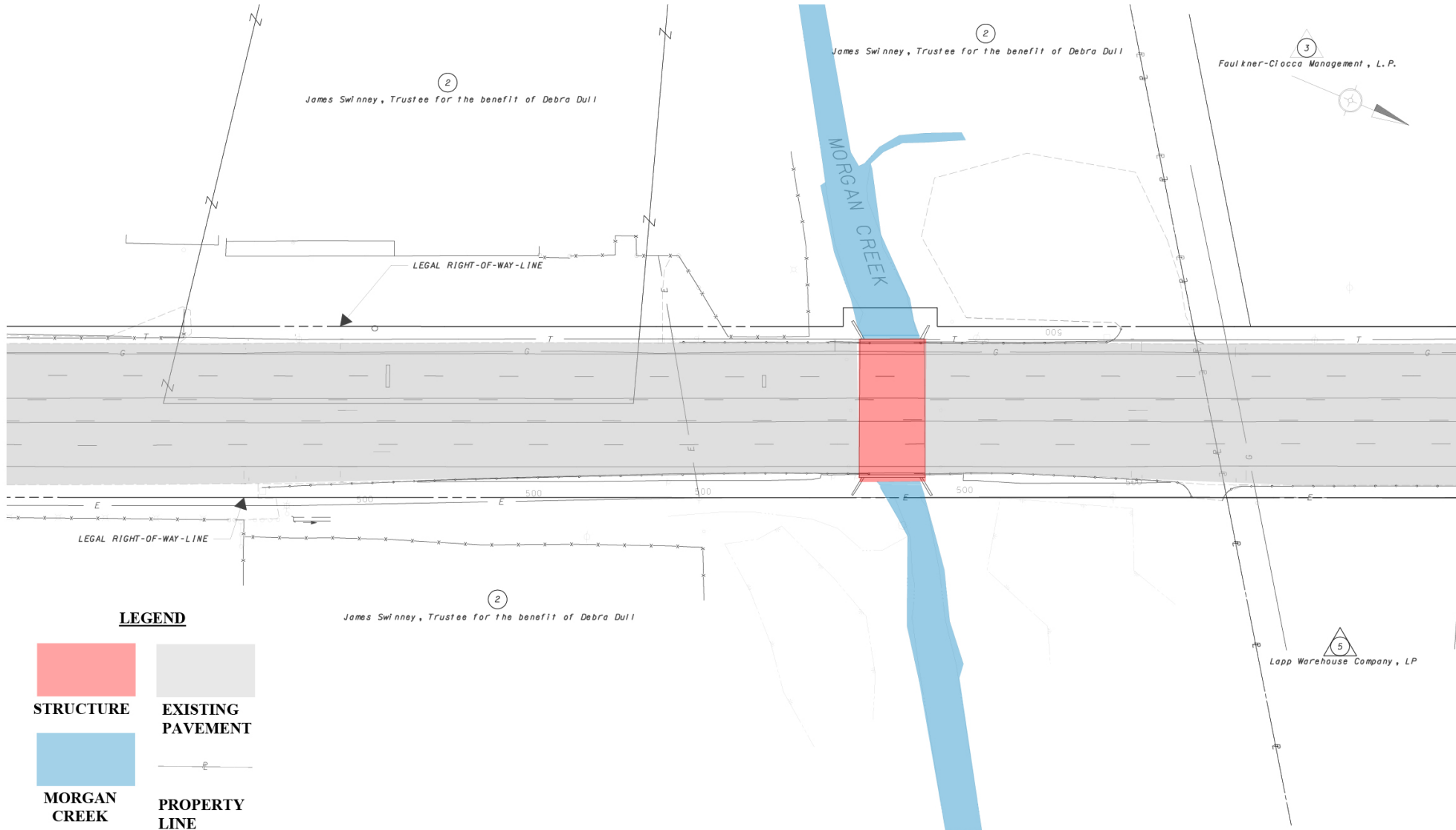


Beaver Run Abutment & Beam Cracks



EXISTING CONDITIONS

Section MCB



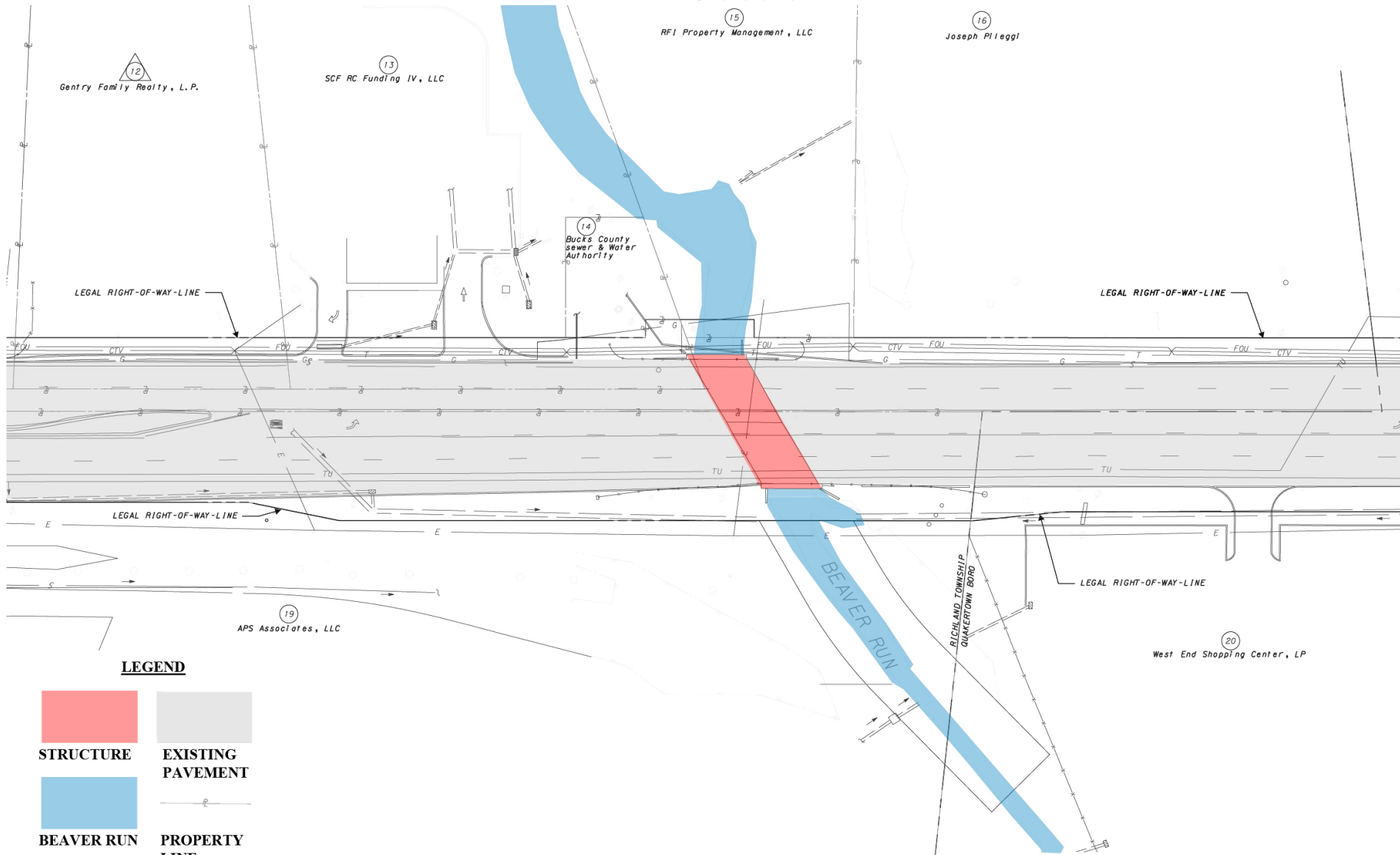
LEGEND

	
STRUCTURE	EXISTING PAVEMENT
	
MORGAN CREEK	PROPERTY LINE



EXISTING CONDITIONS

Section BRB



EXISTING CONDITIONS

Section MCB



Section BRB



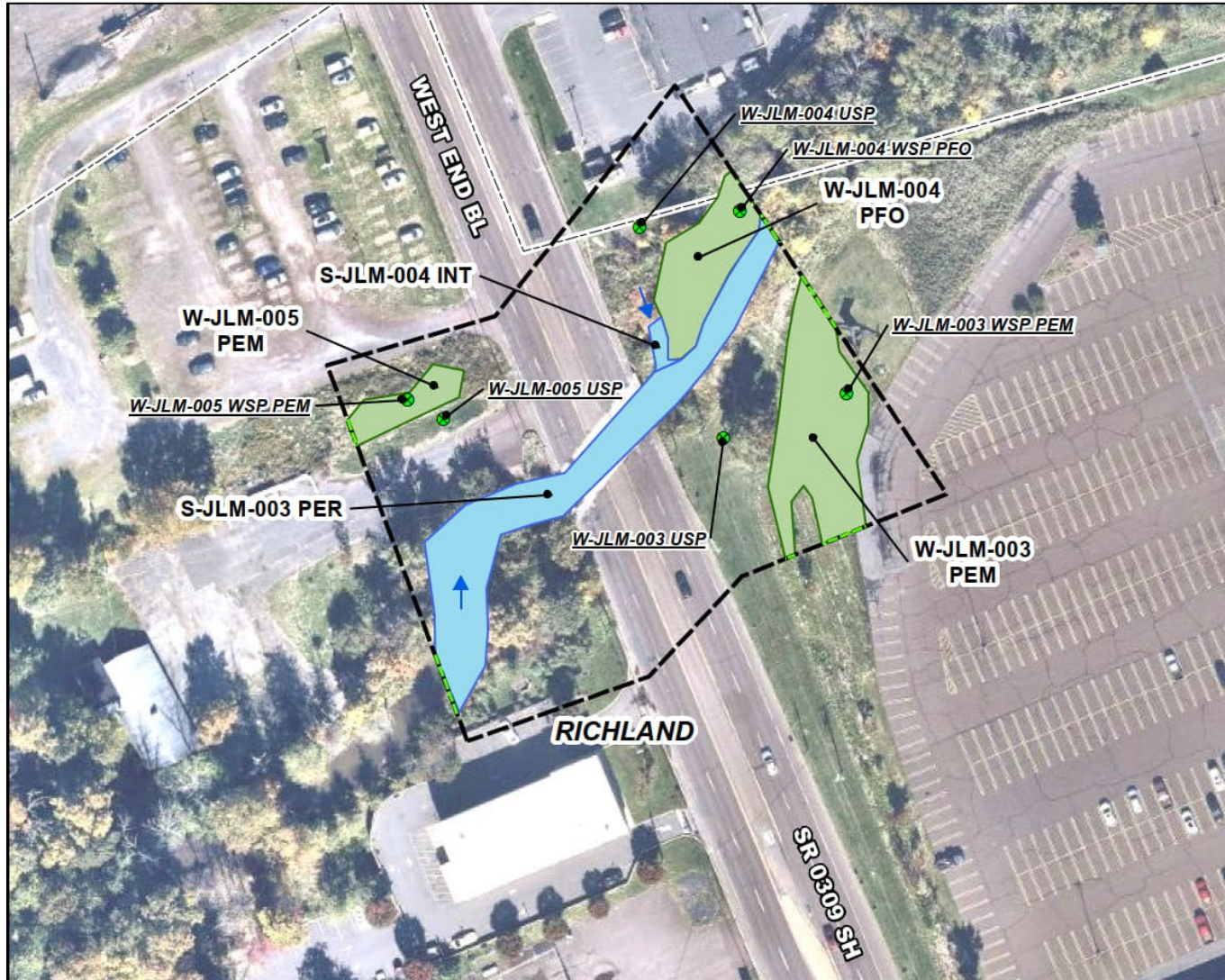
EXISTING CONDITIONS

Environmental Resources



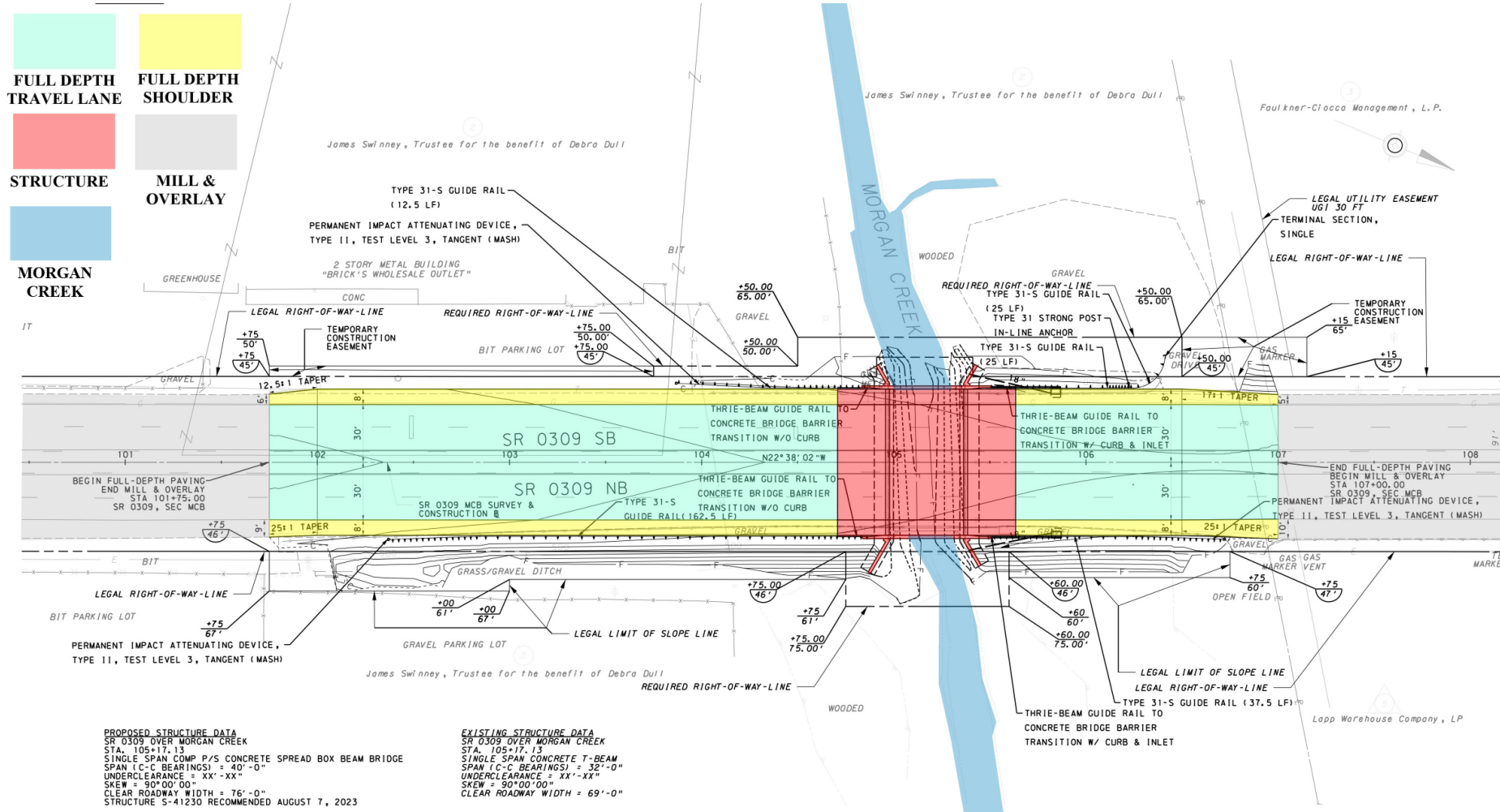
EXISTING CONDITIONS

Environmental Resources



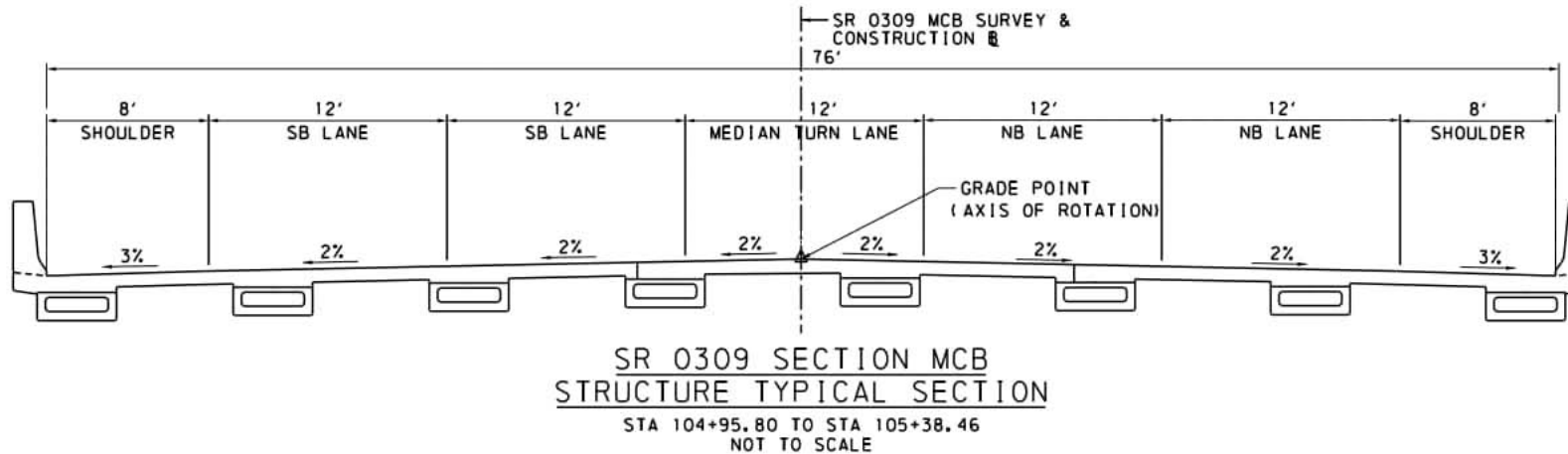
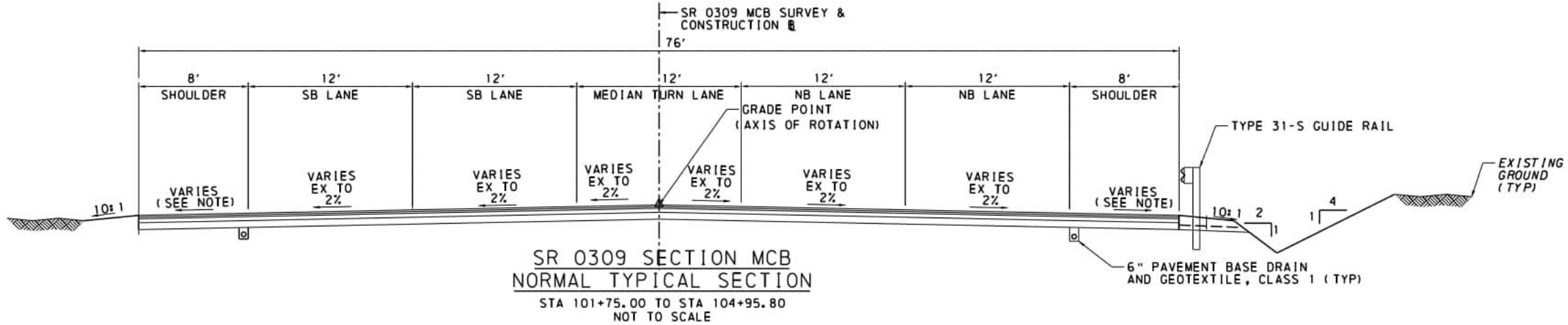
PROPOSED IMPROVEMENTS

Section MCB



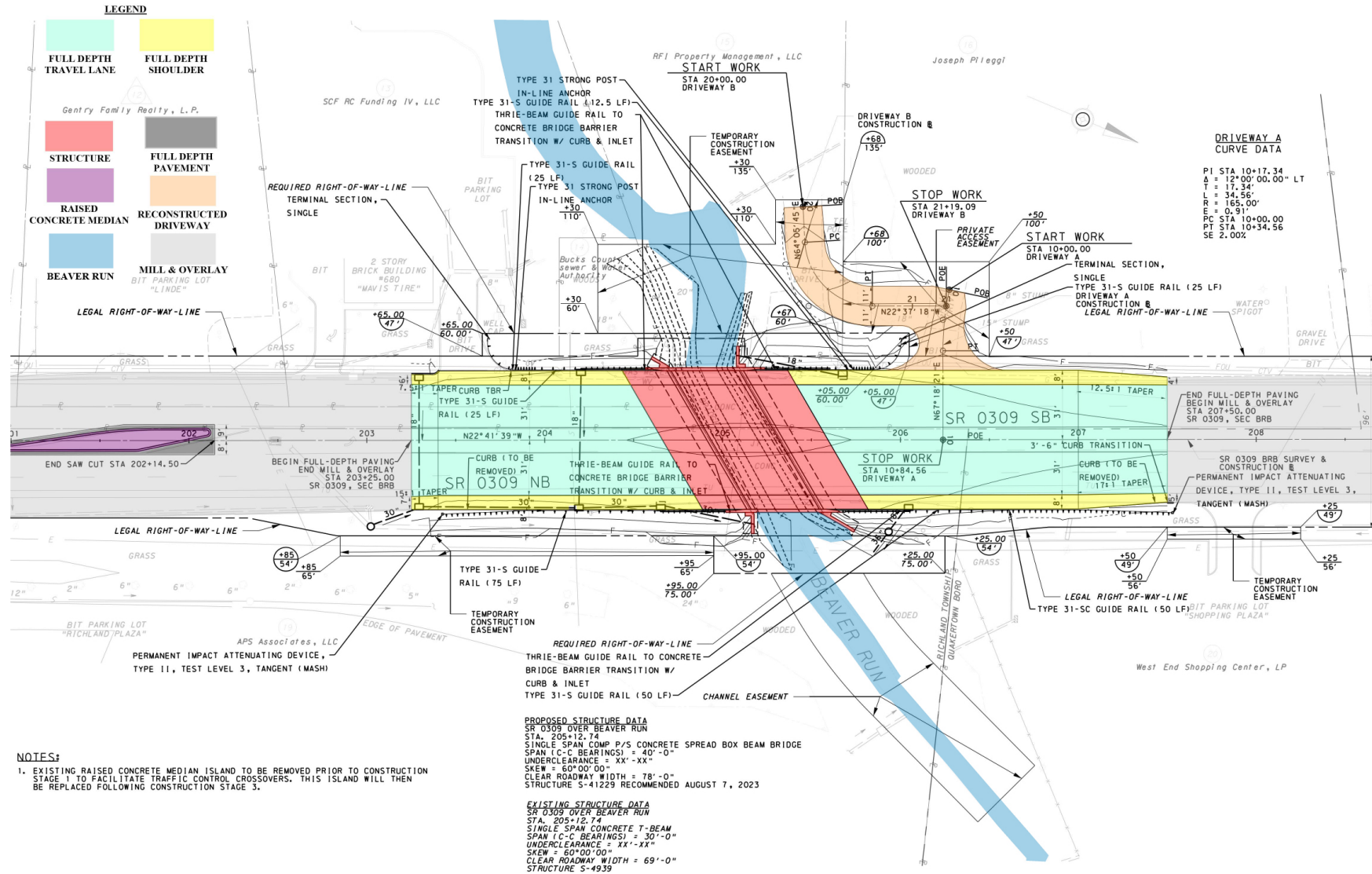
PROPOSED IMPROVEMENTS

Section MCB Typical Sections



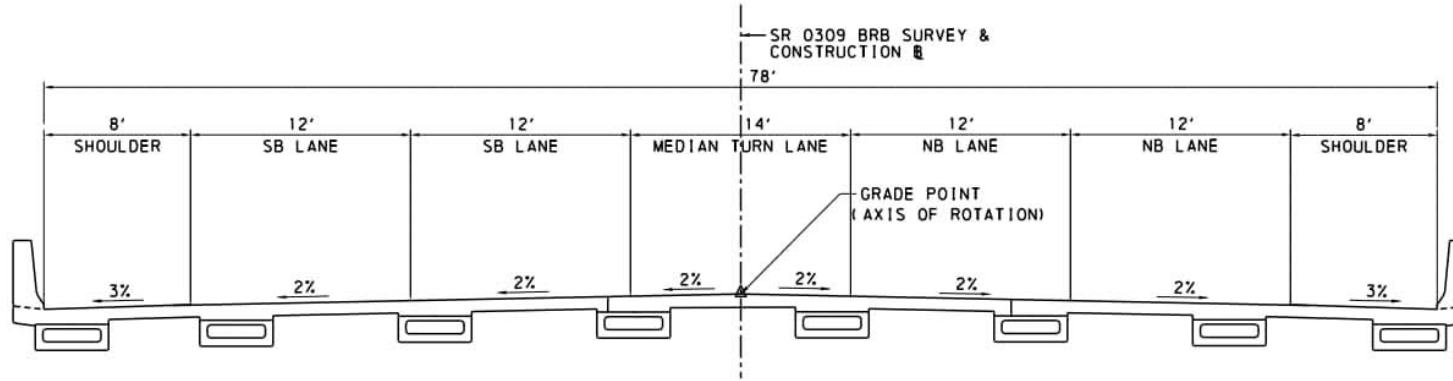
PROPOSED IMPROVEMENTS

Section BRB

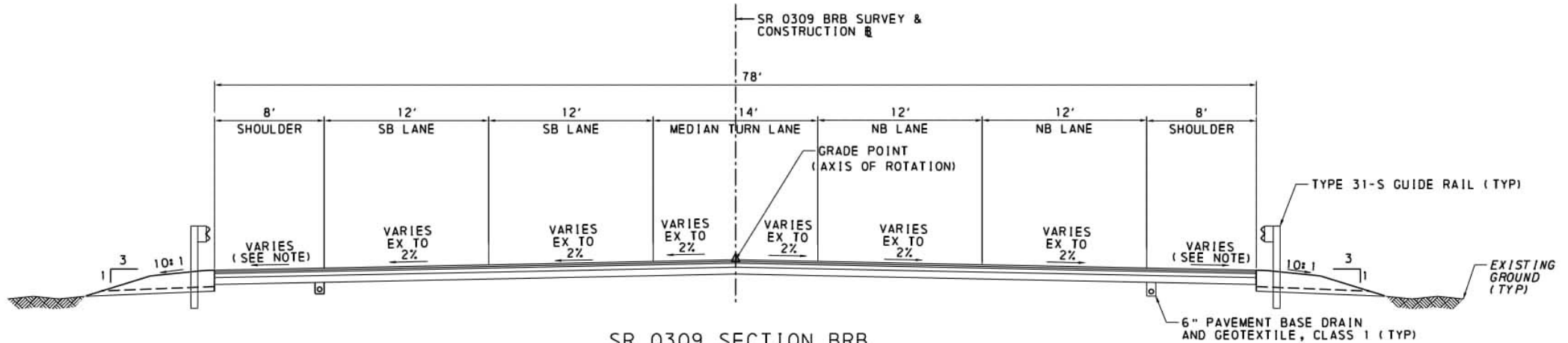


PROPOSED IMPROVEMENTS

Section BRB Typical Sections



SR 0309 SECTION BRB
STRUCTURE TYPICAL SECTION
STA 204+91.20 TO STA 205+34.28
NOT TO SCALE

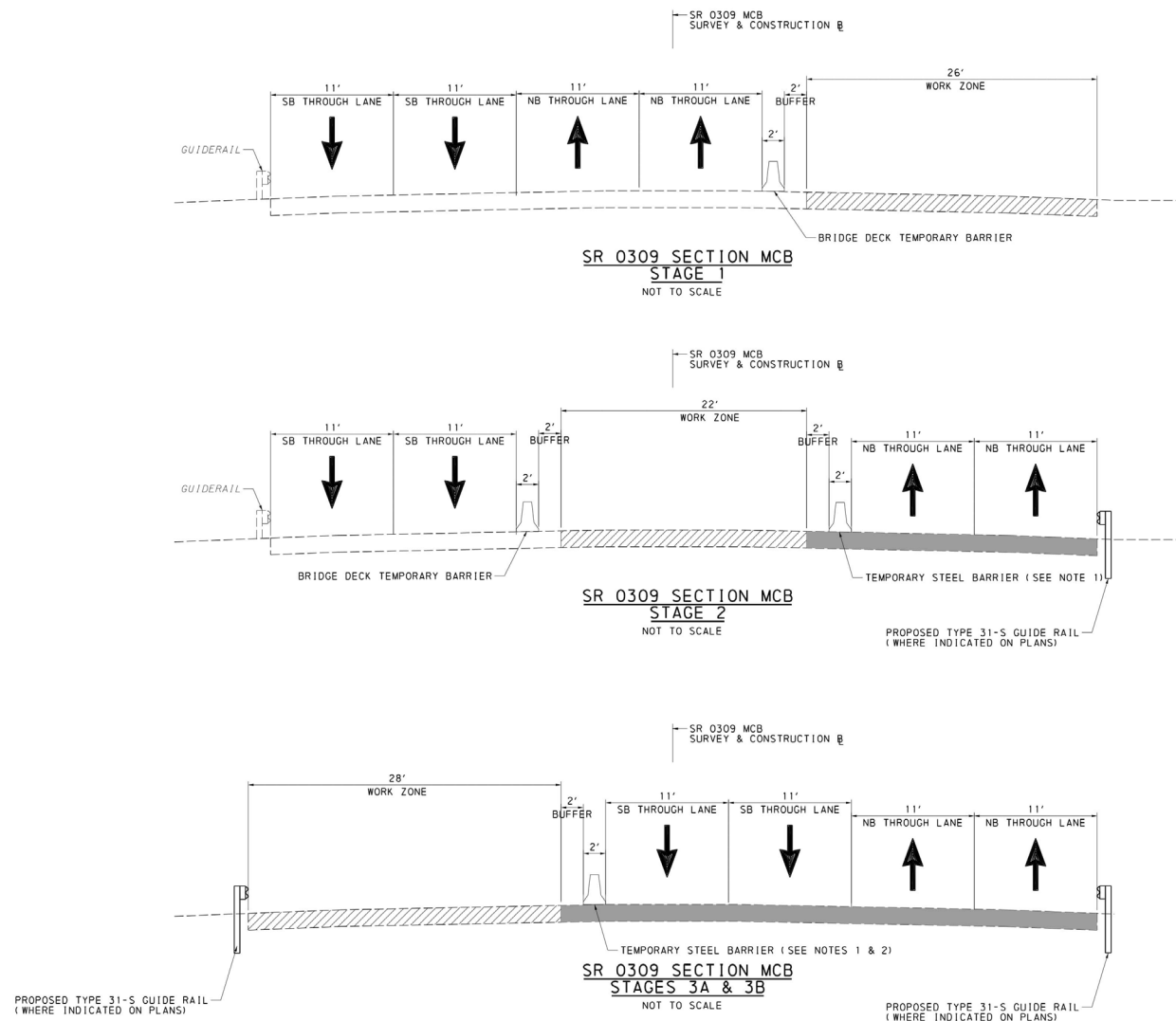


SR 0309 SECTION BRB
NORMAL TYPICAL SECTION
STA 205+34.28 TO STA 207+50.00
NOT TO SCALE



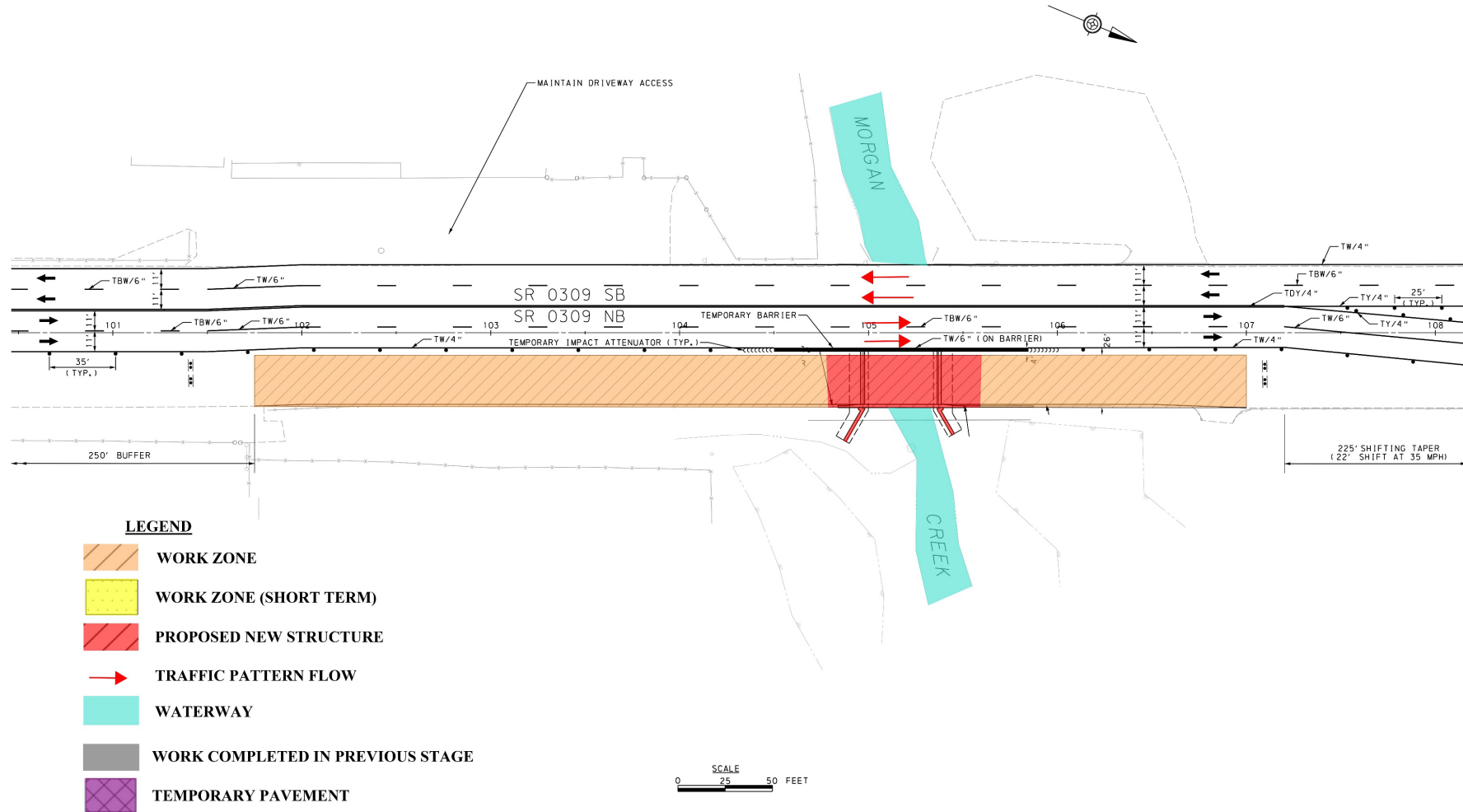
TRAFFIC CONTROL DURING CONSTRUCTION

Section MCB



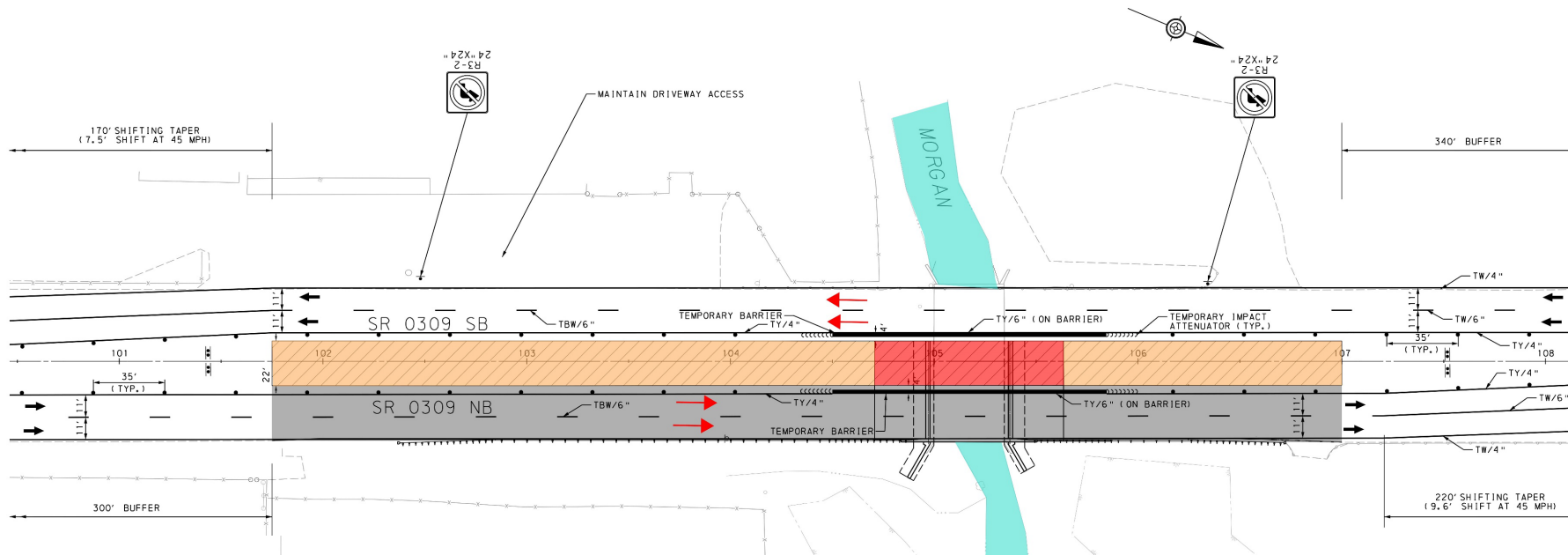
TRAFFIC CONTROL DURING CONSTRUCTION

Section MCB Stage 1










TRAFFIC CONTROL DURING CONSTRUCTION

Section MCB Stage 2



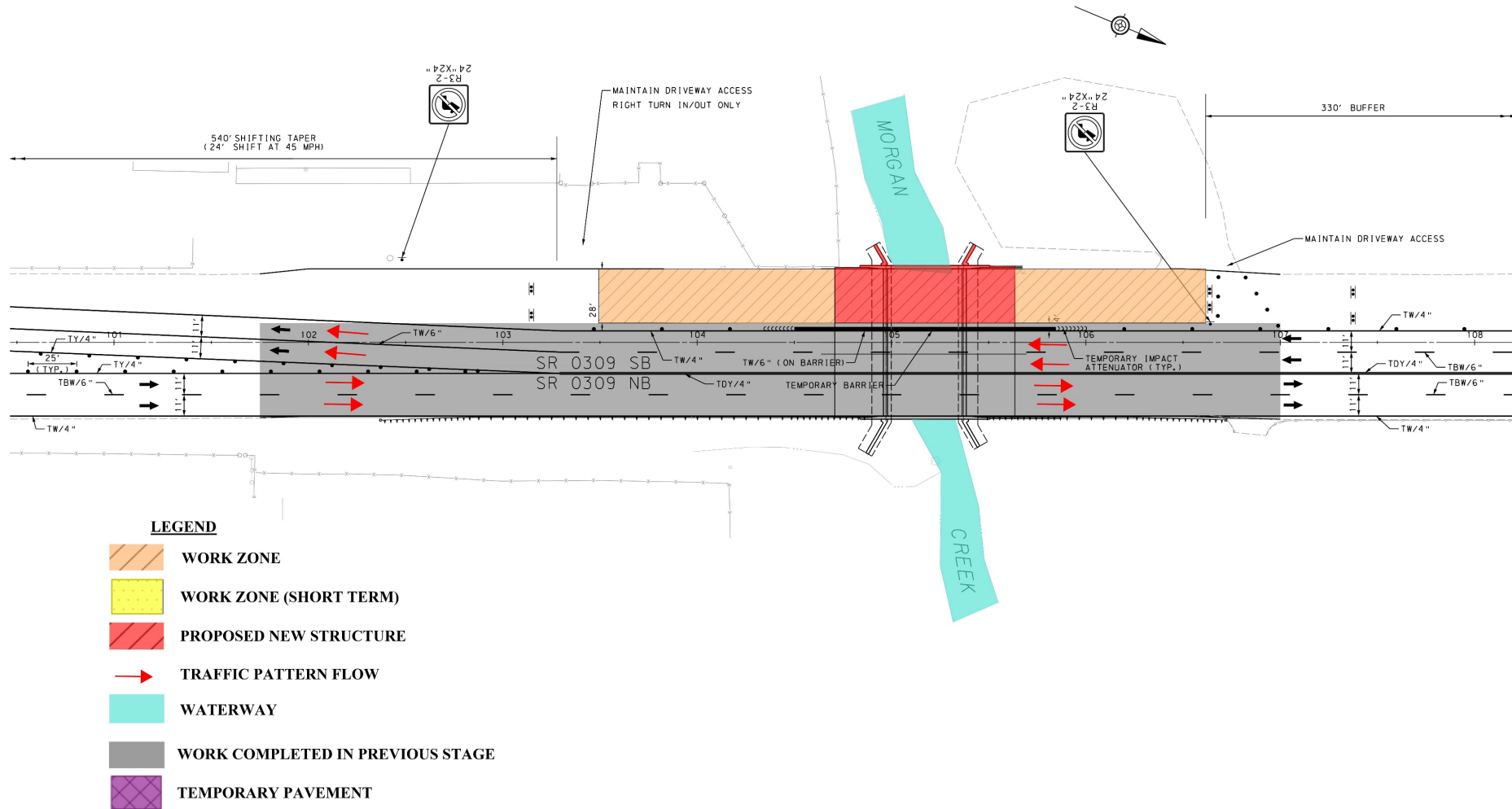
LEGEND

-  WORK ZONE
-  WORK ZONE (SHORT TERM)
-  PROPOSED NEW STRUCTURE
-  TRAFFIC PATTERN FLOW
-  WATERWAY
-  WORK COMPLETED IN PREVIOUS STAGE
-  TEMPORARY PAVEMENT



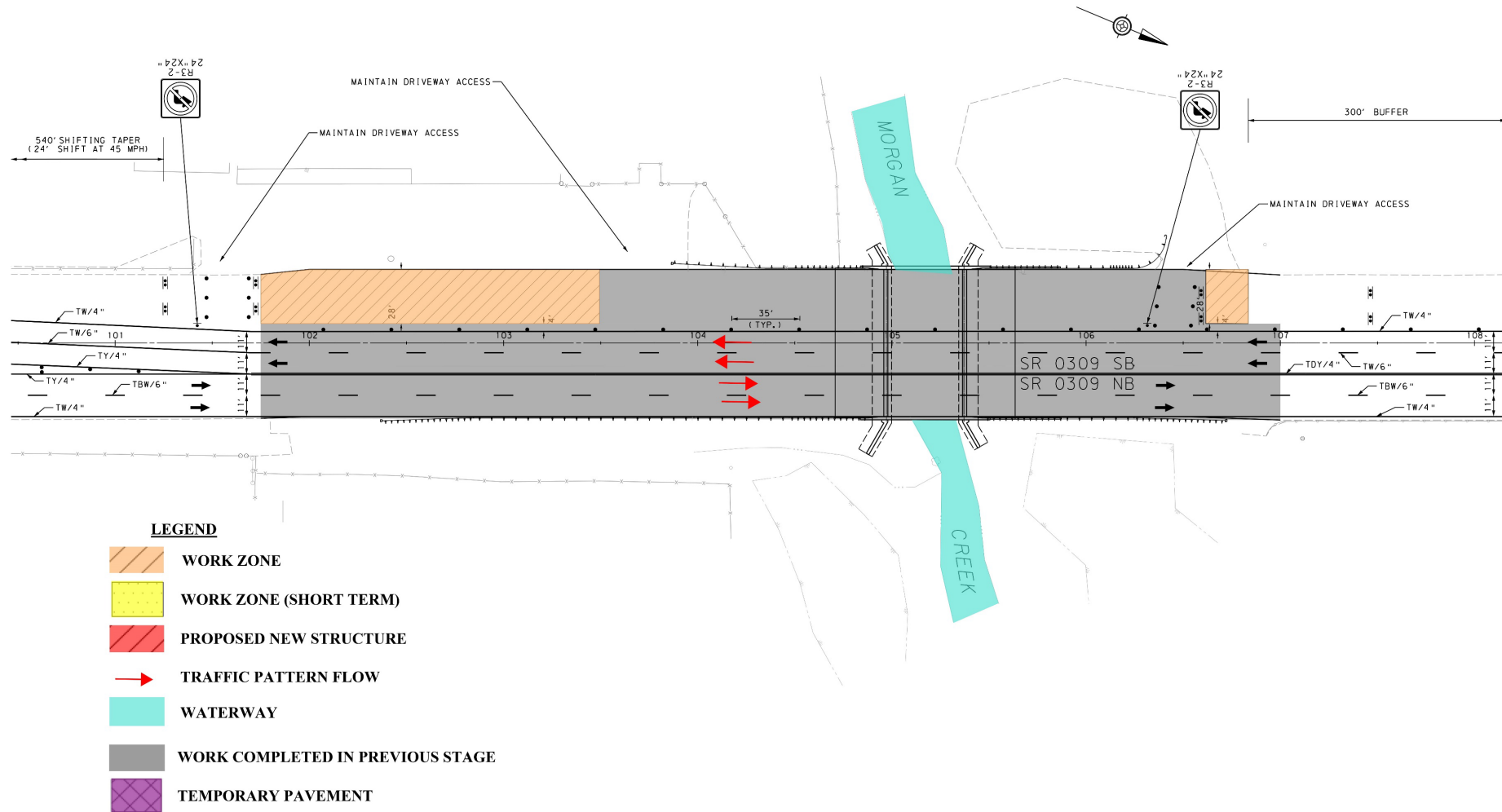
TRAFFIC CONTROL DURING CONSTRUCTION

Section MCB Stage 3A



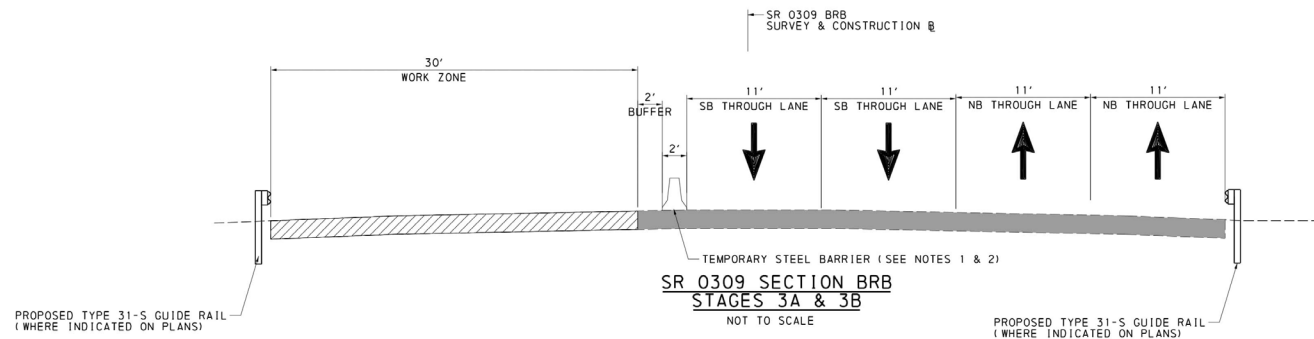
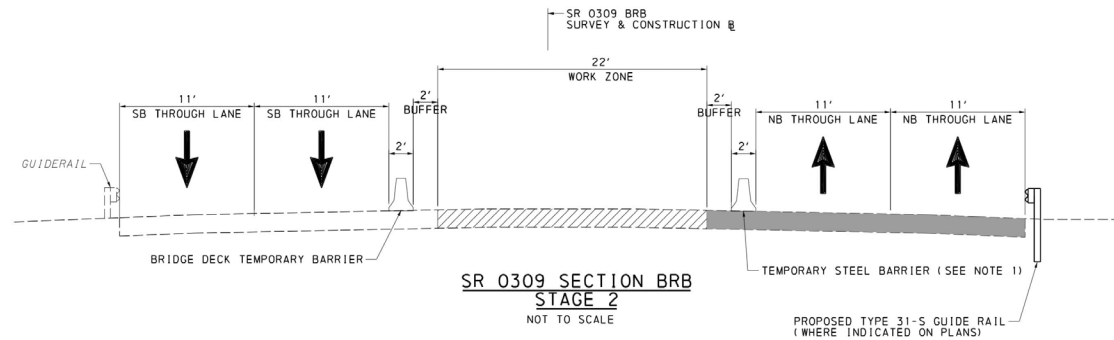
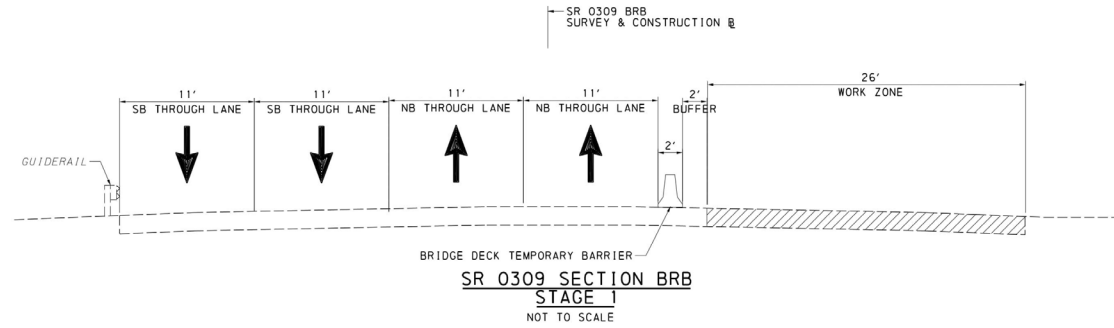
TRAFFIC CONTROL DURING CONSTRUCTION

Section MCB Stage 3B



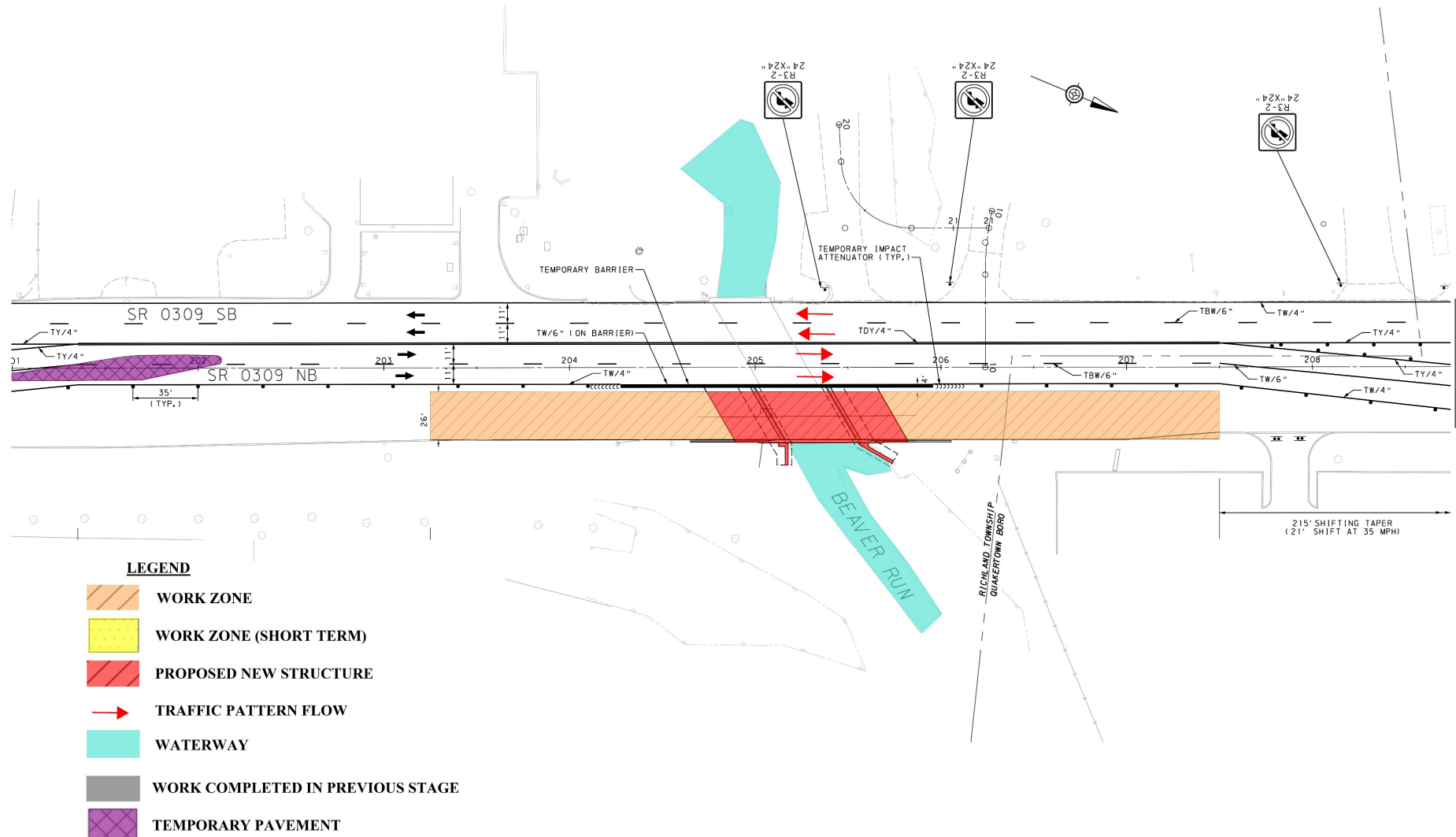
TRAFFIC CONTROL DURING CONSTRUCTION

Section BRB



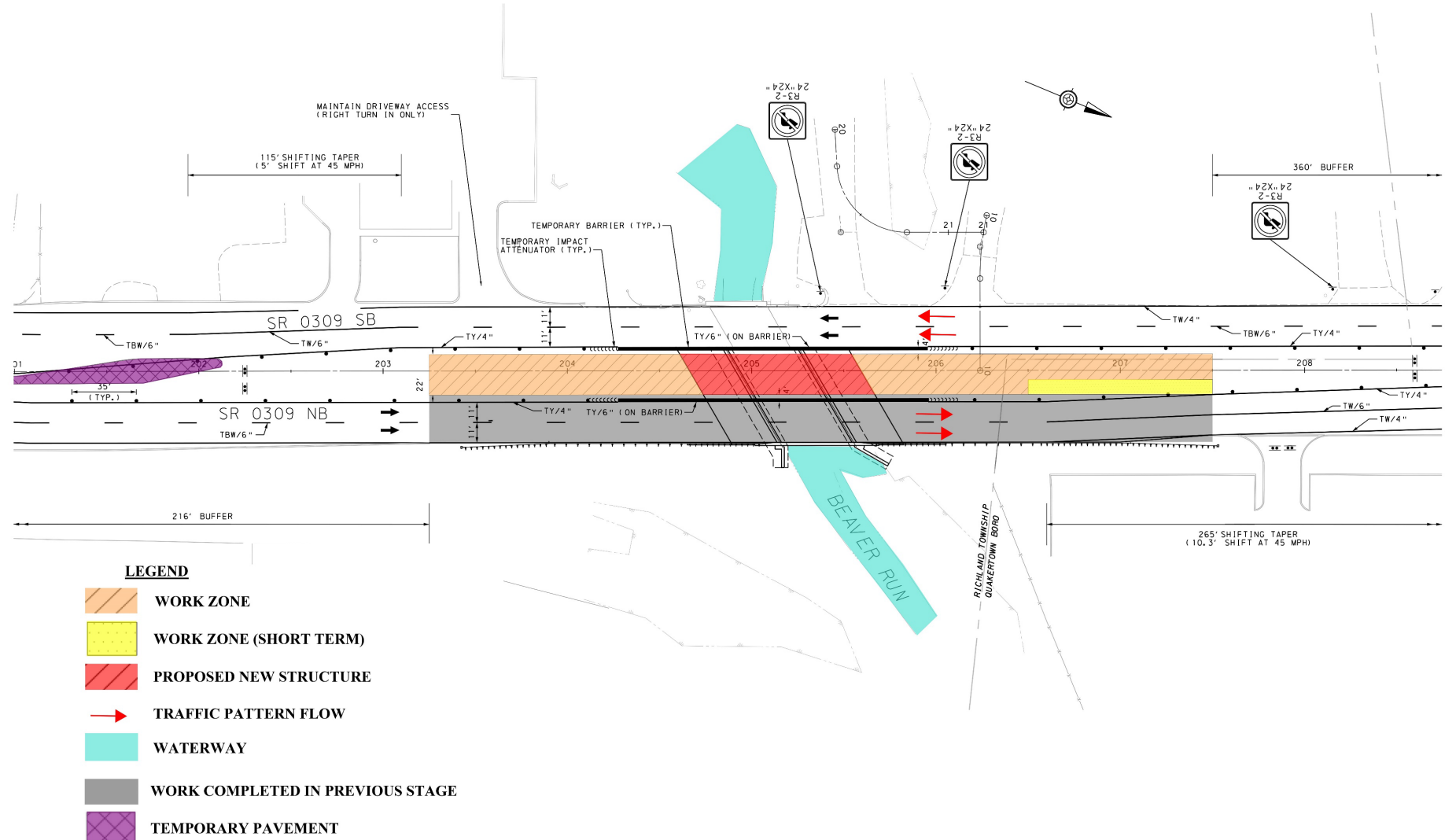
TRAFFIC CONTROL DURING CONSTRUCTION

Section BRB Stage 1



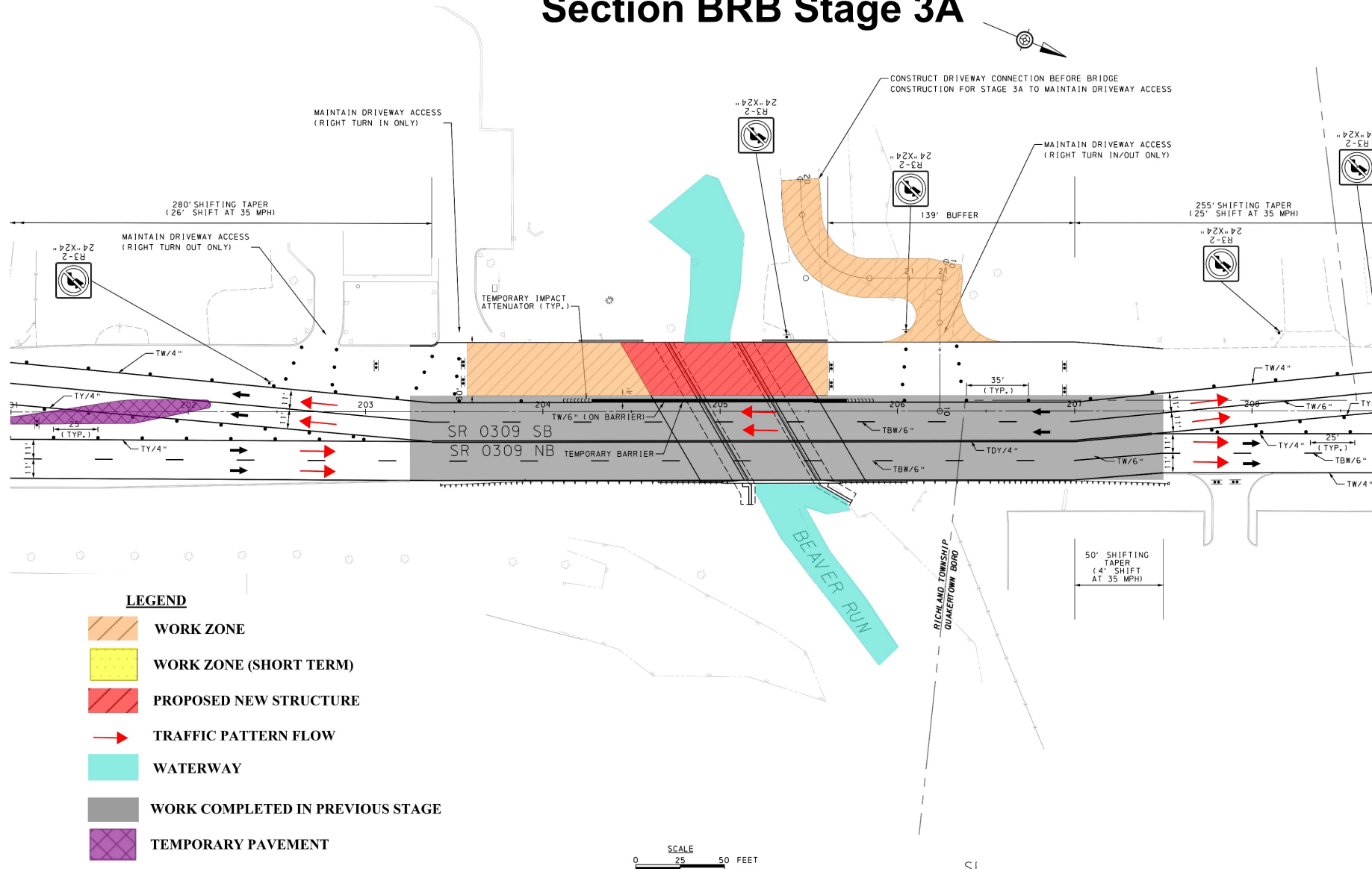
TRAFFIC CONTROL DURING CONSTRUCTION

Section BRB Stage 2



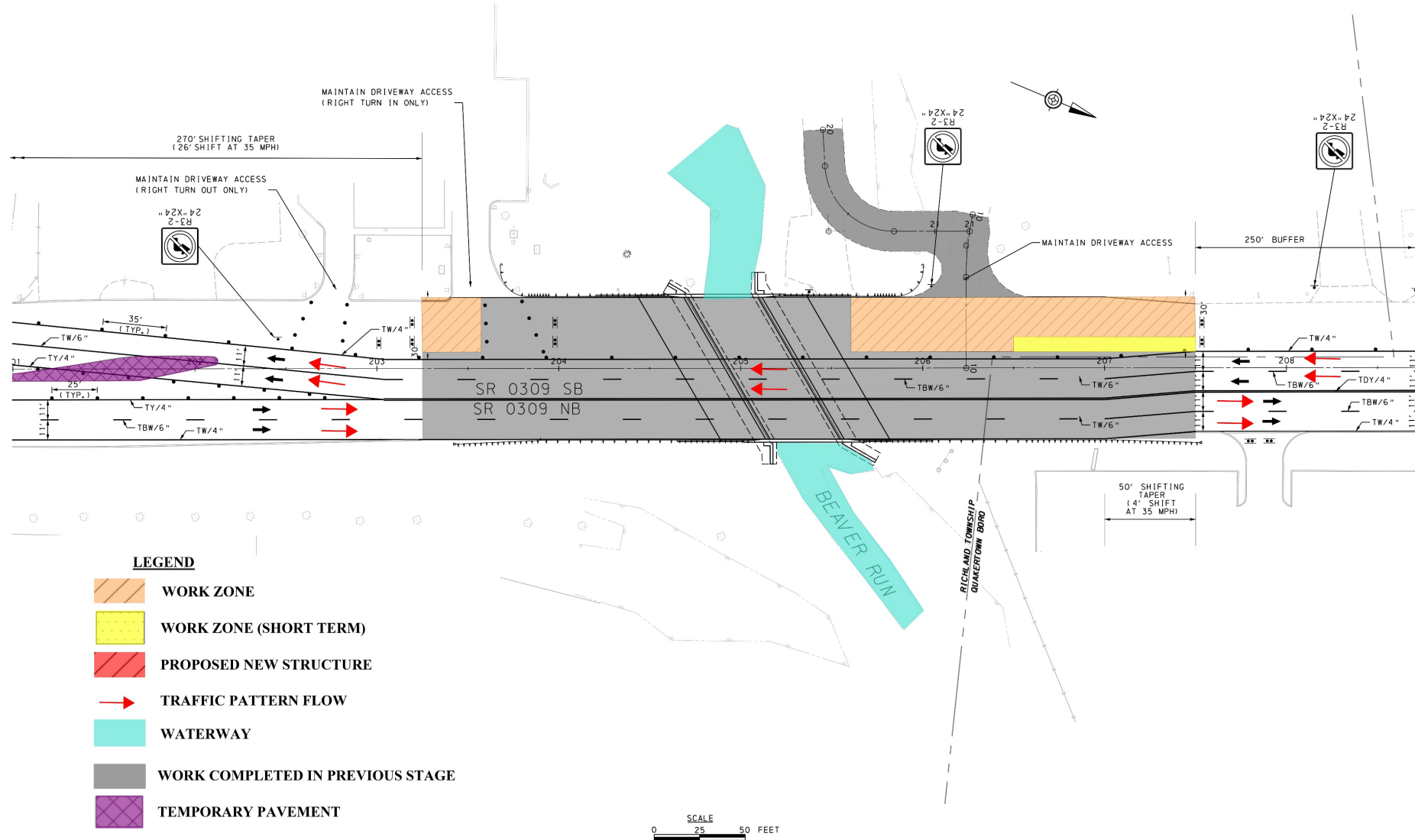
TRAFFIC CONTROL DURING CONSTRUCTION

Section BRB Stage 3A

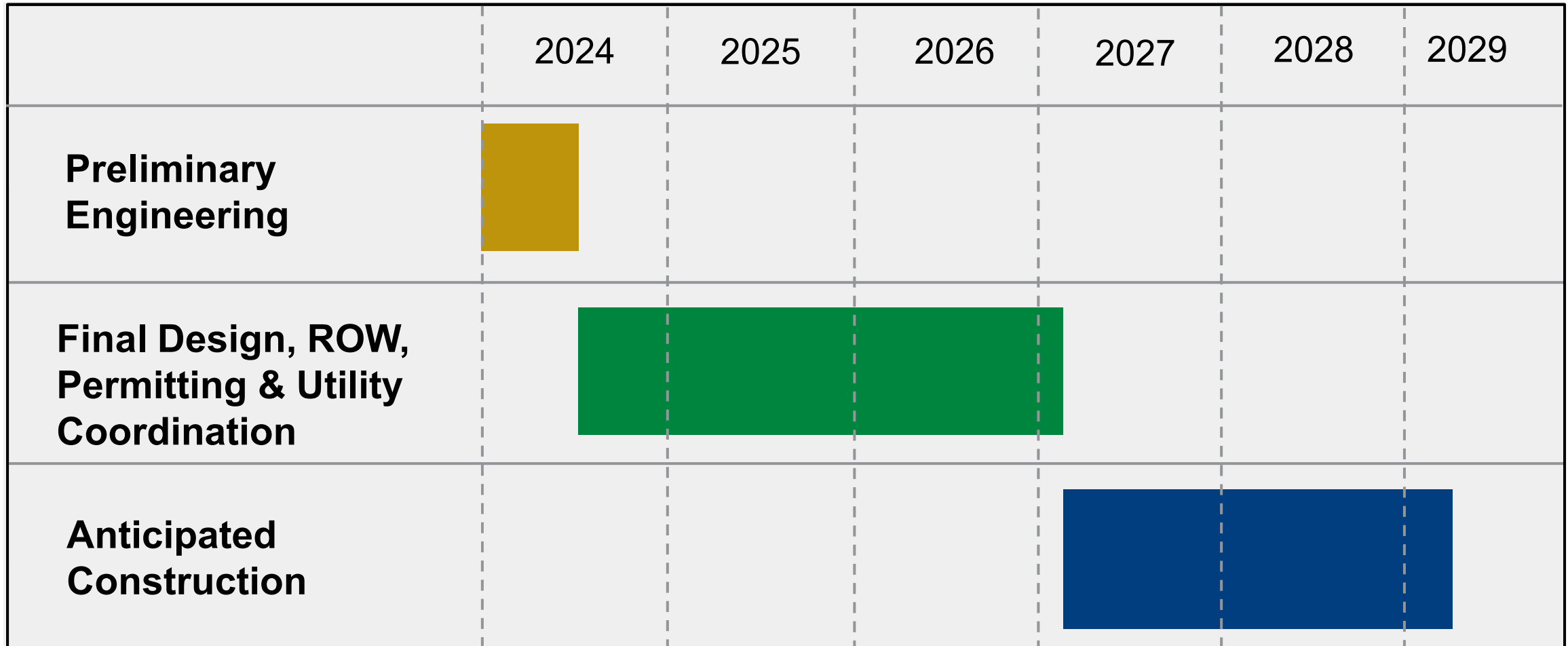


TRAFFIC CONTROL DURING CONSTRUCTION

Section BRB Stage 3B



PROJECT SCHEDULE



QUESTIONS?



THANK YOU FOR PARTICIPATING!

FOR MORE INFORMATION, VISIT THE PENNDOT DISTRICT 6 WEBSITE

[HTTPS://WWW.PENNDOT.PA.GOV/REGIONALOFFICES/DISTRICT-6](https://www.penndot.pa.gov/regionaloffices/district-6)

Click on Design and Construction Projects > Bucks County > Route 309 over Morgan Creek and Beaver Run