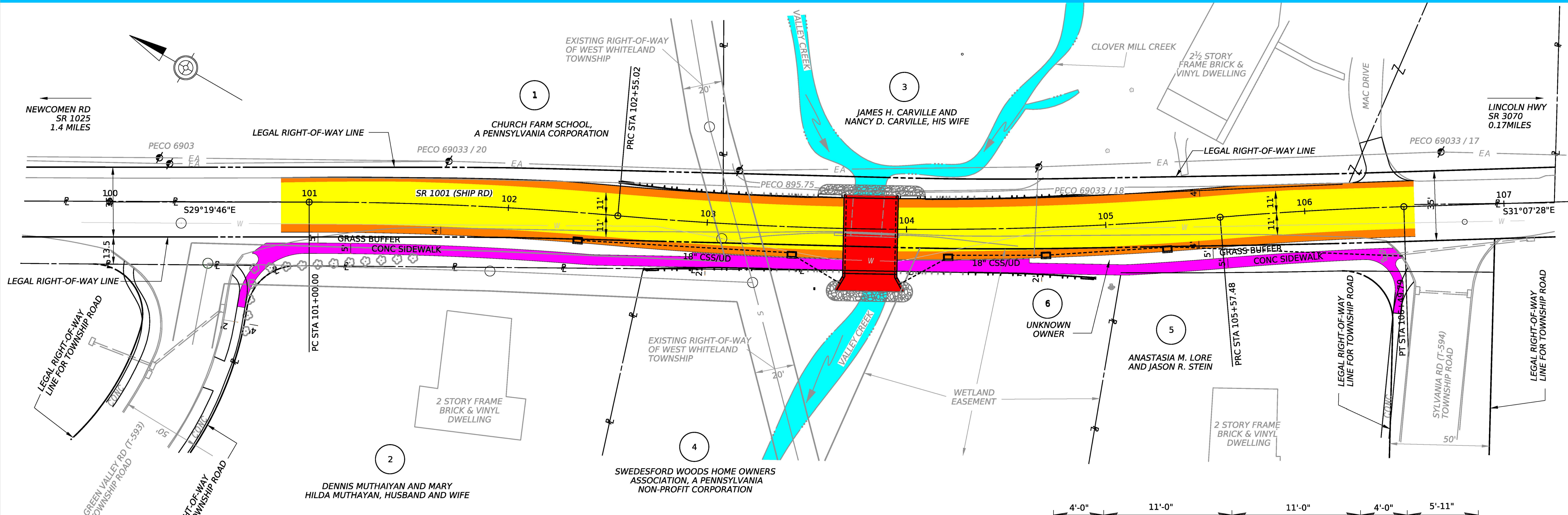


SR 1001 OVER VALLEY CREEK STRUCTURE REPLACEMENT WEST WHITELAND TOWNSHIP, CHESTER COUNTY

PLOTTED: 7-SEP-2023 10:34

OPERATOR: nimateiko
FILE NAME: pw://PDEDCRAPPW01.pennndot.lcl:Connect_Protects/Documents/OpenRoads_Projects/D06/15-Chester/15.1001.CB2 (98039)/DESIGN/Right-Of-Way/Public/ATK2.dgn



LEGEND

○ PARCEL IDENTIFICATION

GENERAL PLAN

