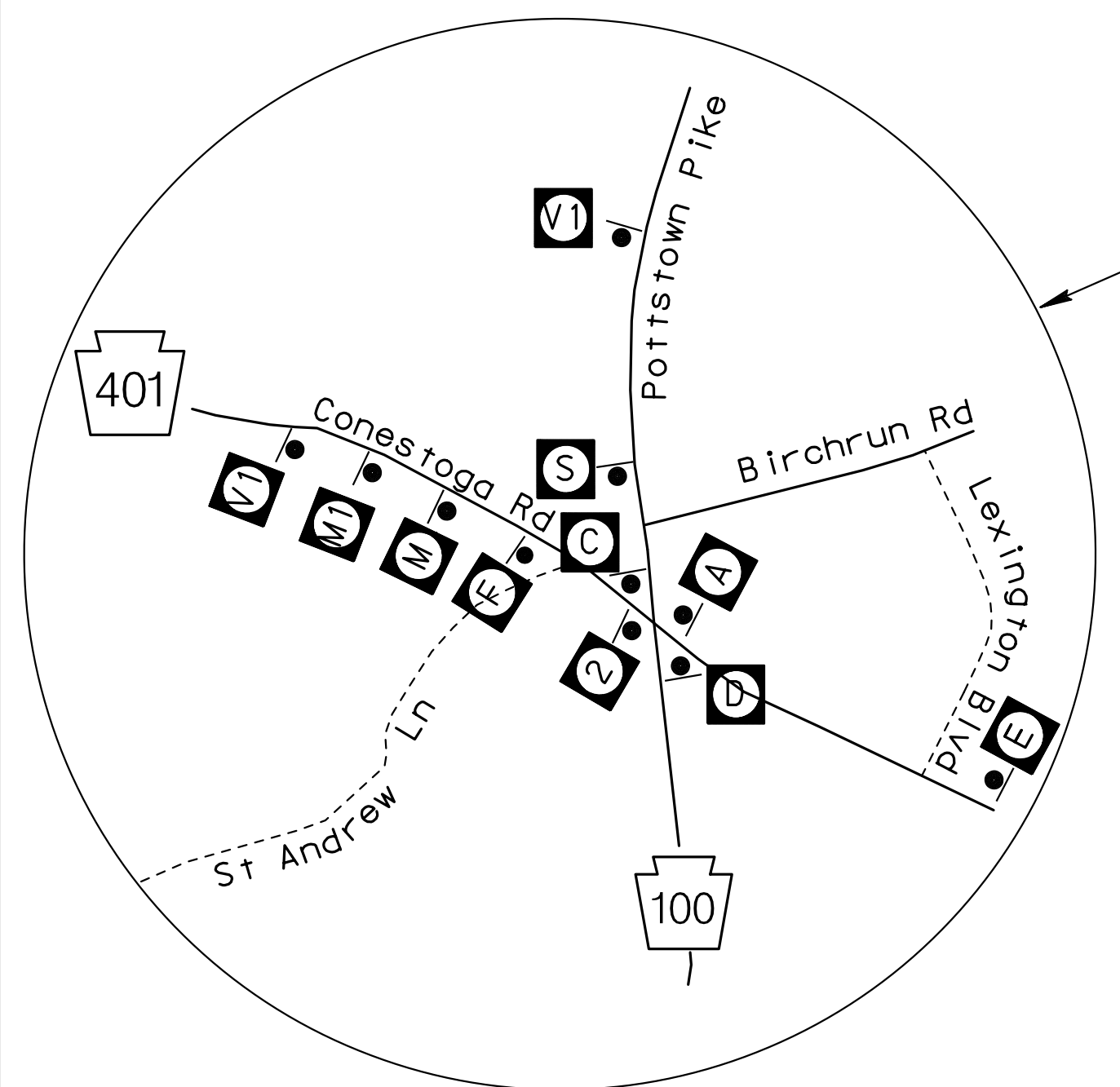
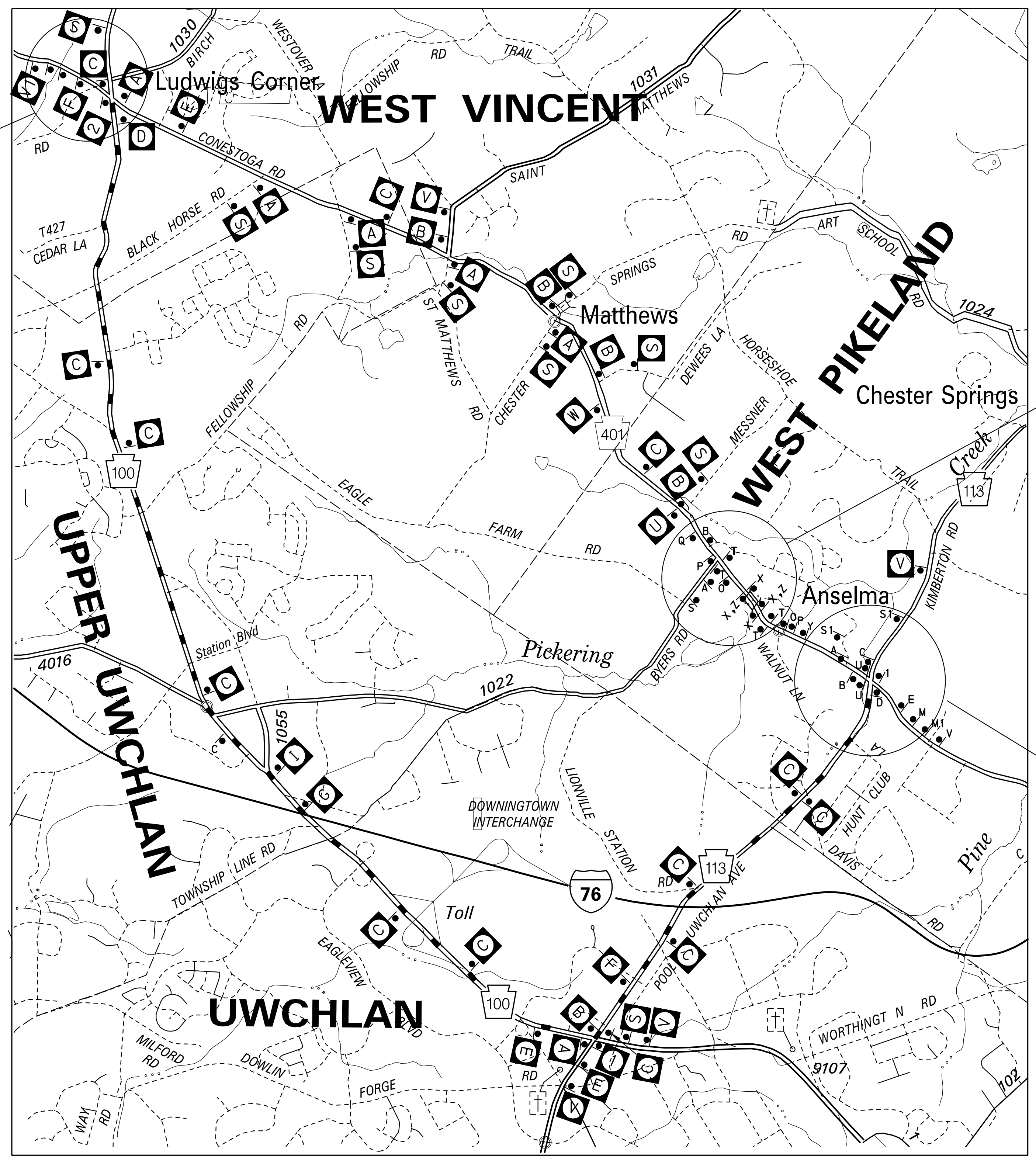


OPERATOR: pwr // PDRCADPW102.pennDOT, ic:it:ss4-Projects/Documents/006/15-Chester/150401CB4/Roadway/Detail/detour plan.dgn  
 D-9012 CAD0 (02-90) REVISED (10-04)  
 PLOTTED: 29-OCT-2020 12:07

DISTRICT	COUNTY	ROUTE	SECTION	SHEET
6-0	CHESTER	401	CB4	1 OF 4
WEST PIKELAND TOWNSHIP				
REV NO	REVISIONS	DATE	BY	APPD



ENLARGEMENT



## SR 401 DETOUR PLAN

### LEGEND

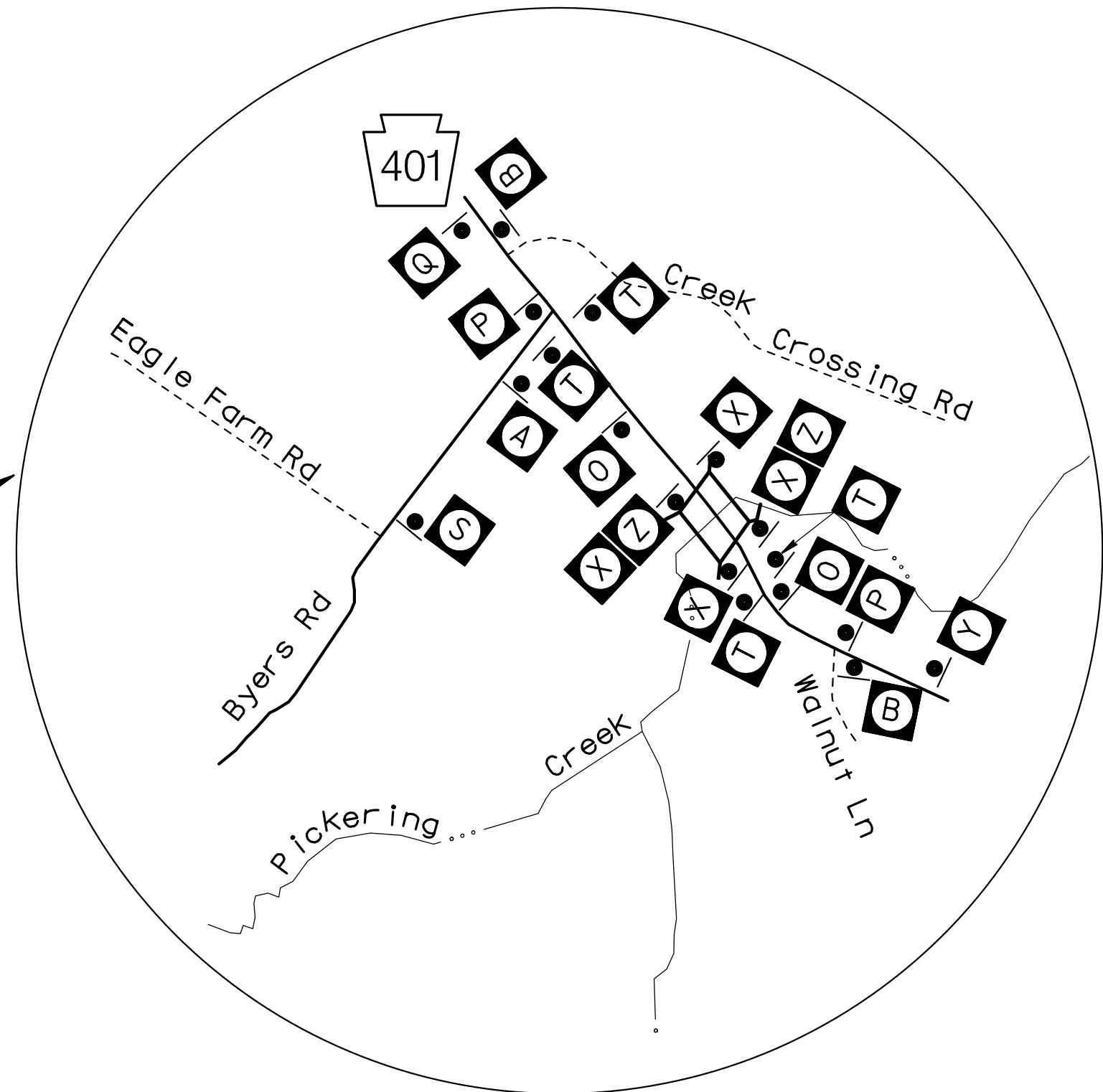
- DETOUR ROUTE
- STATE ROUTE
- TOWNSHIP ROAD
- TOWNSHIP LINE



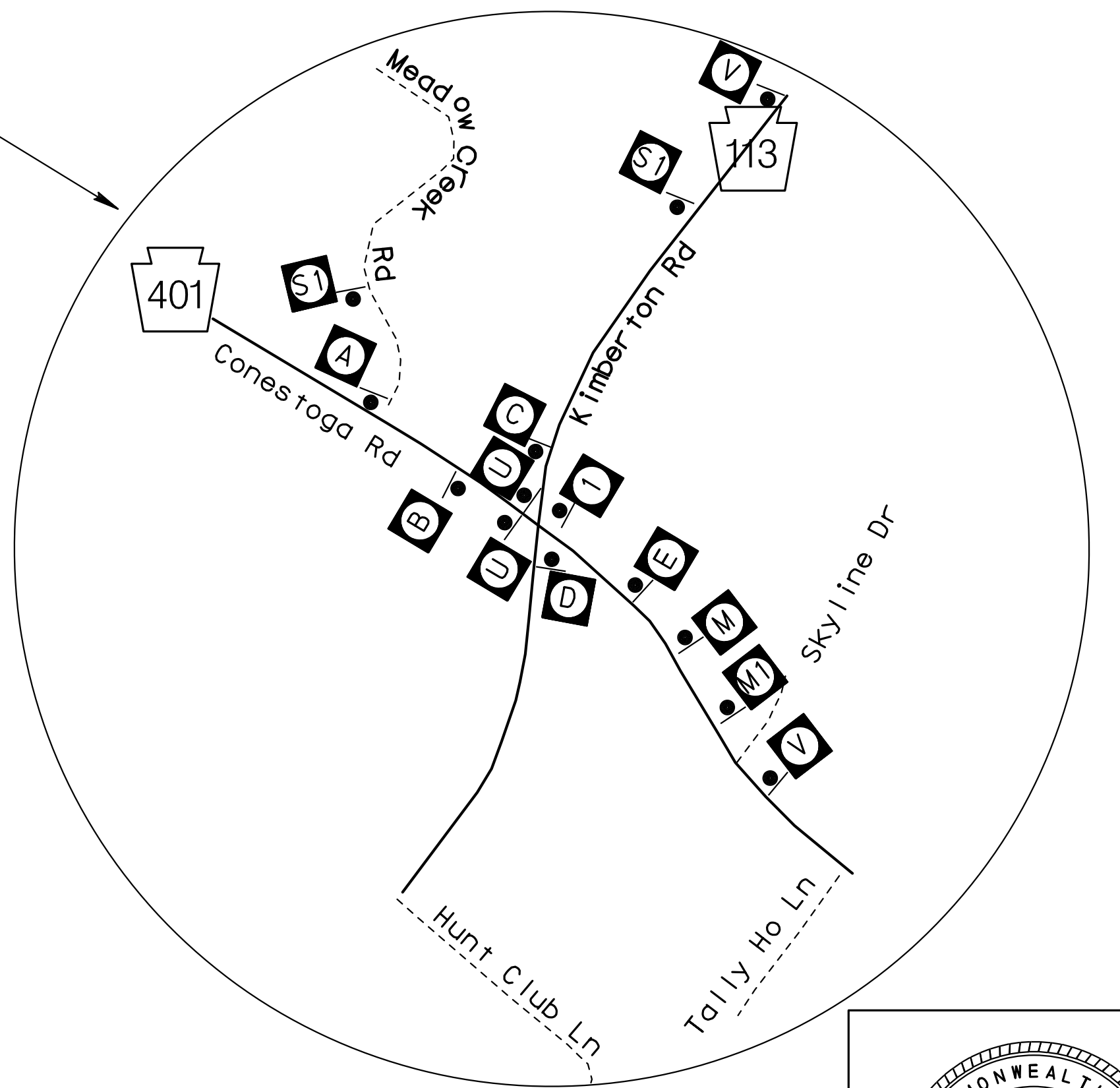
SCALE

### NOTES:

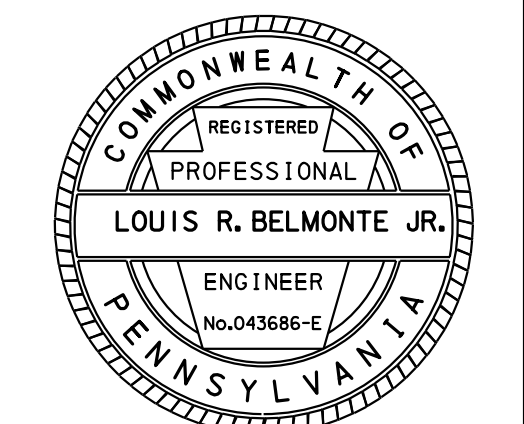
1. OVERALL DETOUR LENGTH = 11.2 MILES
2. SPECIAL SIGNS COLORS:  
 BACKGROUND: ORANGE (REFLECTIVE)  
 LEGEND AND BORDER: BACK (NON-REFLECTIVE)
3. INSTALL TYPE B YELLOW FLASHING LIGHTS ON TOP OF TYPE III BARRICADES AND WARNING SIGNS AS SHOWN.
4. PLACE SIGN R11-2-1 ACROSS THE ENTIRE WIDTH OF THE ROADWAY.



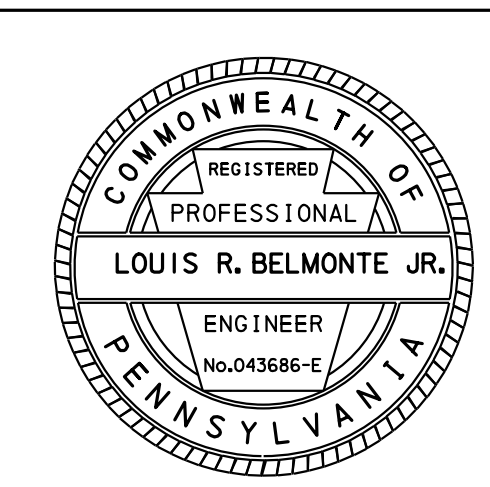
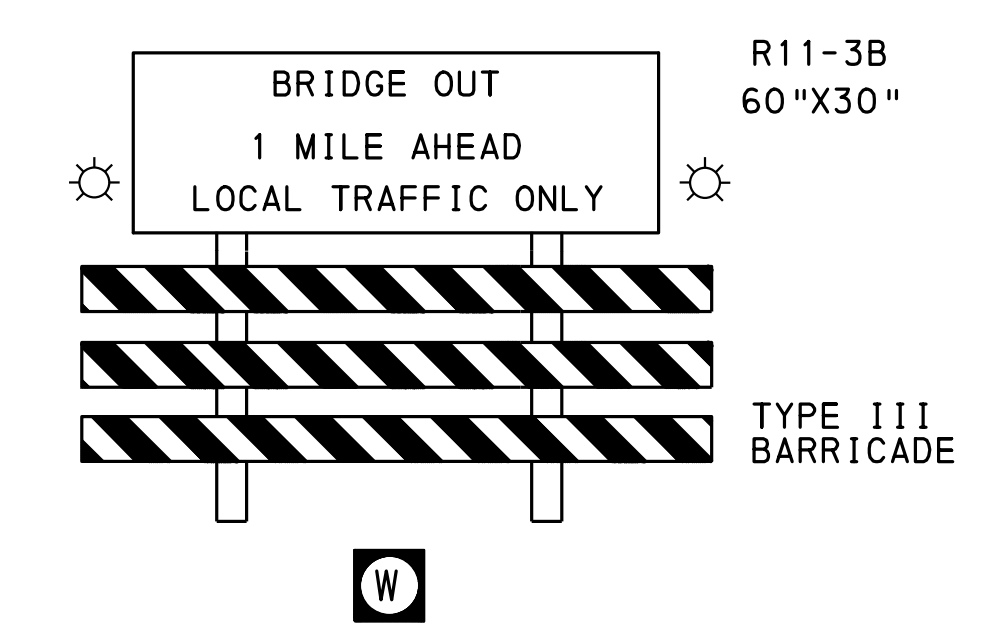
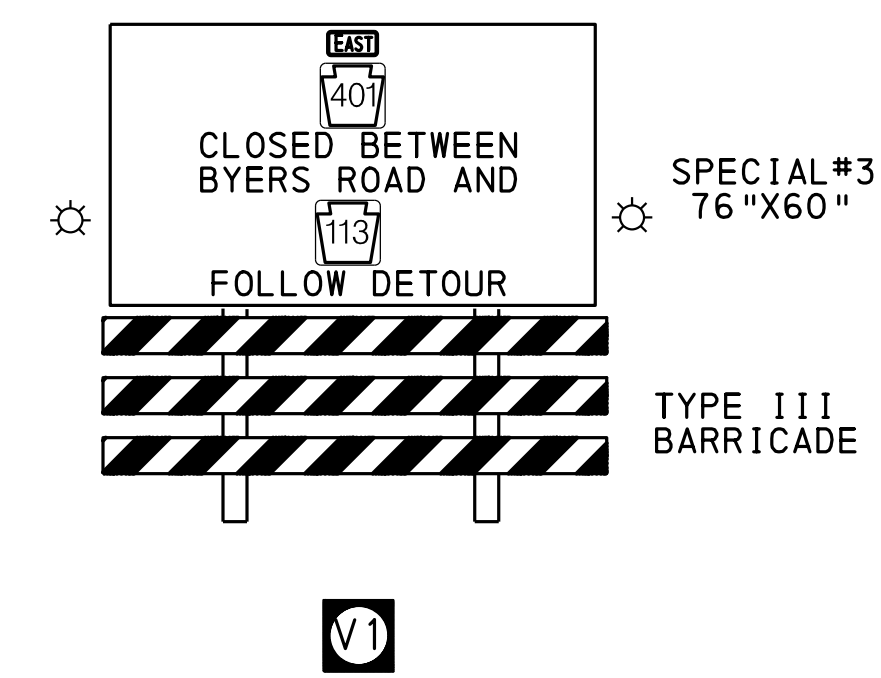
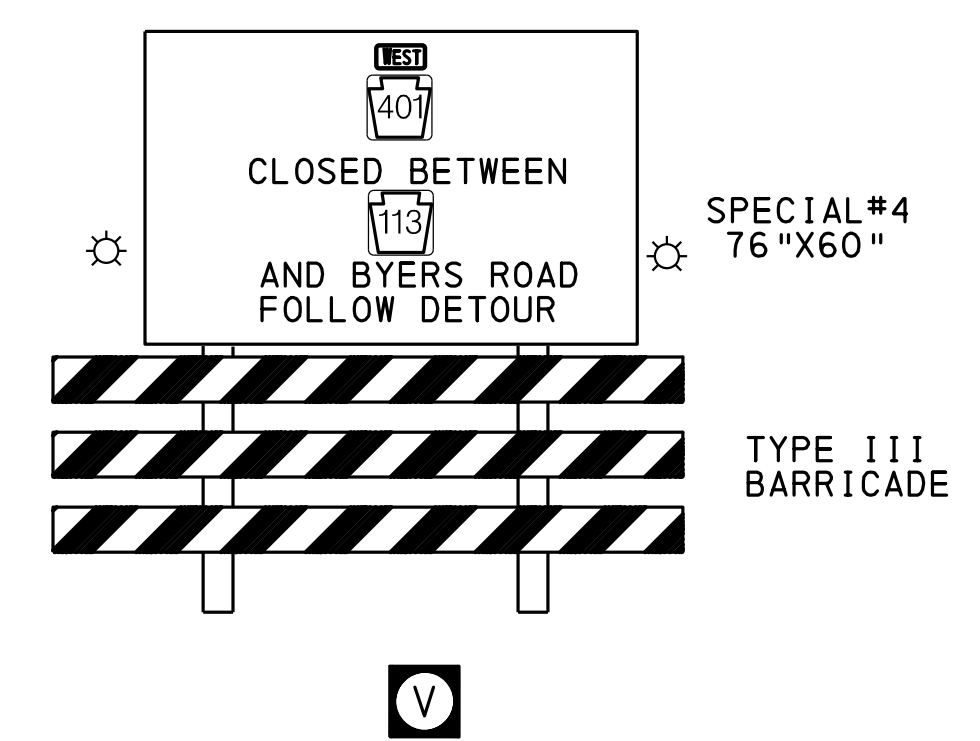
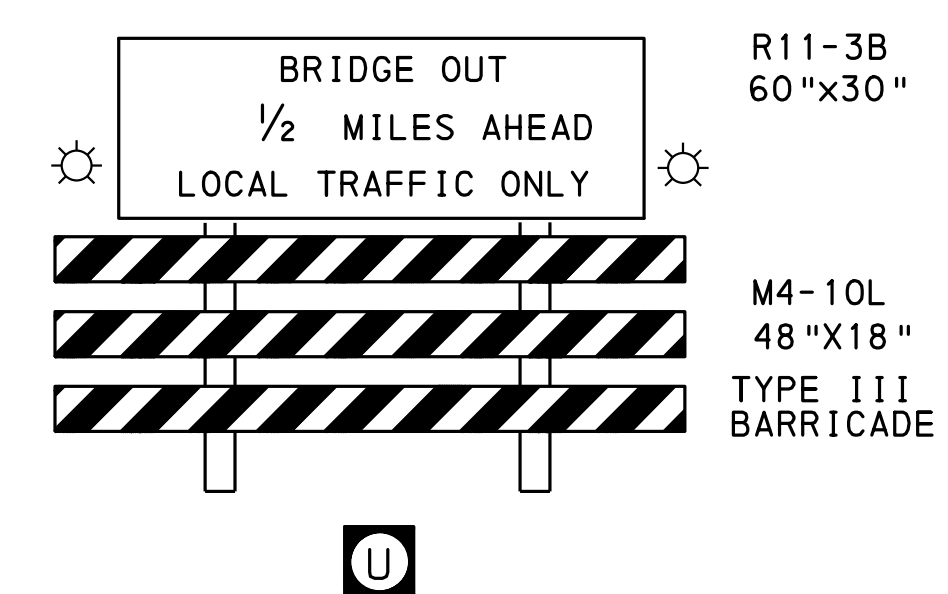
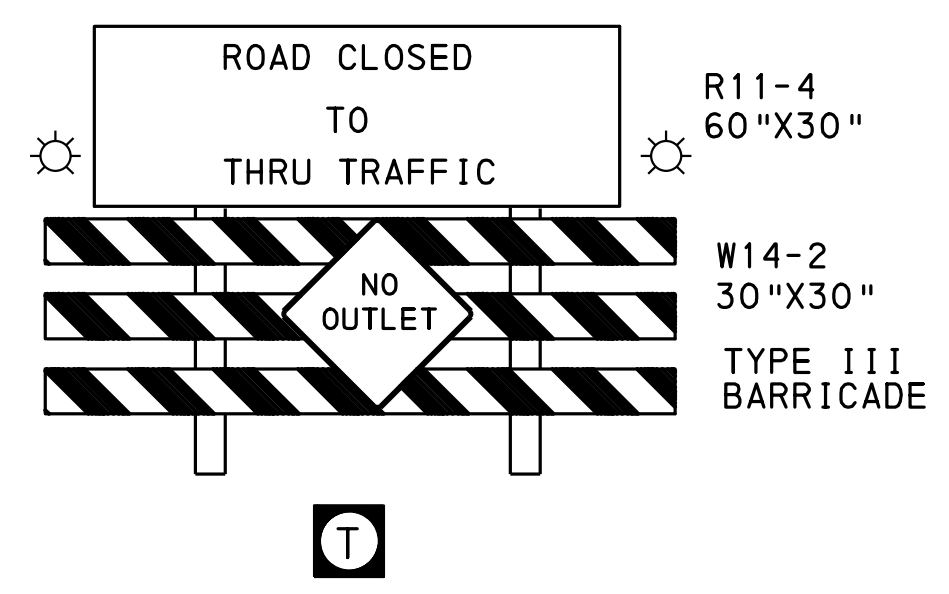
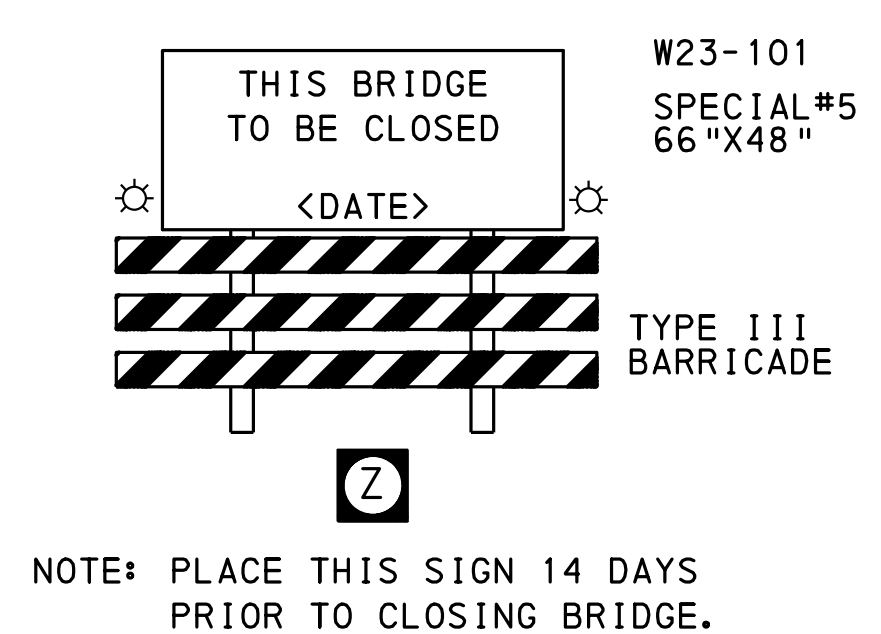
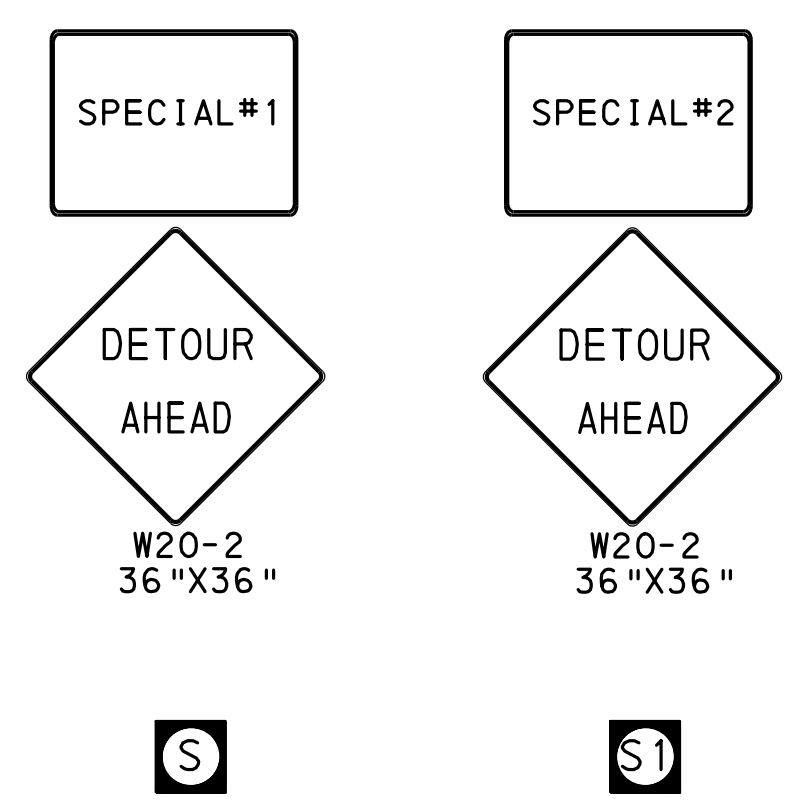
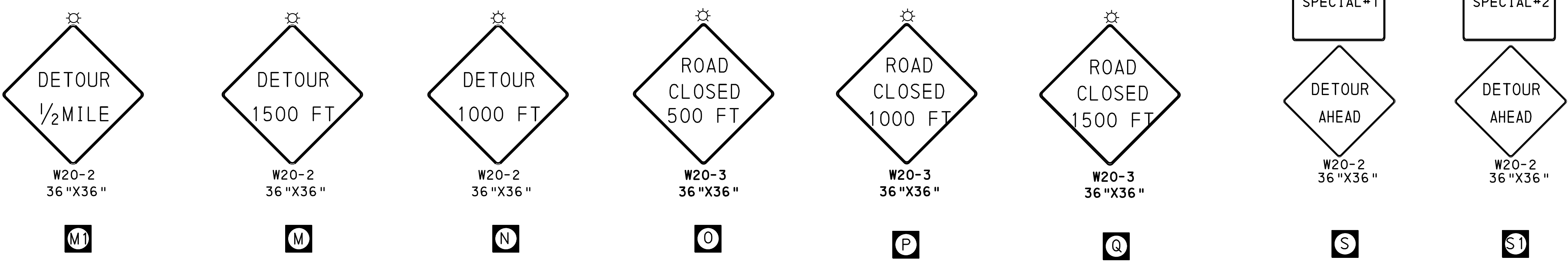
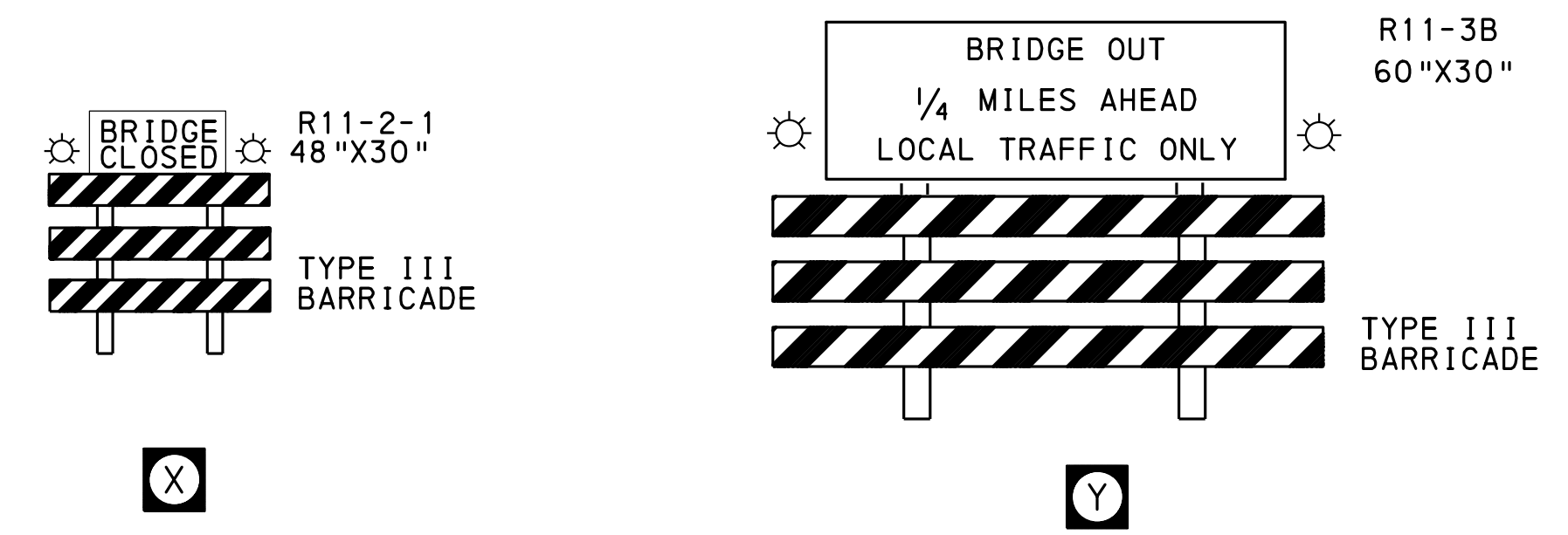
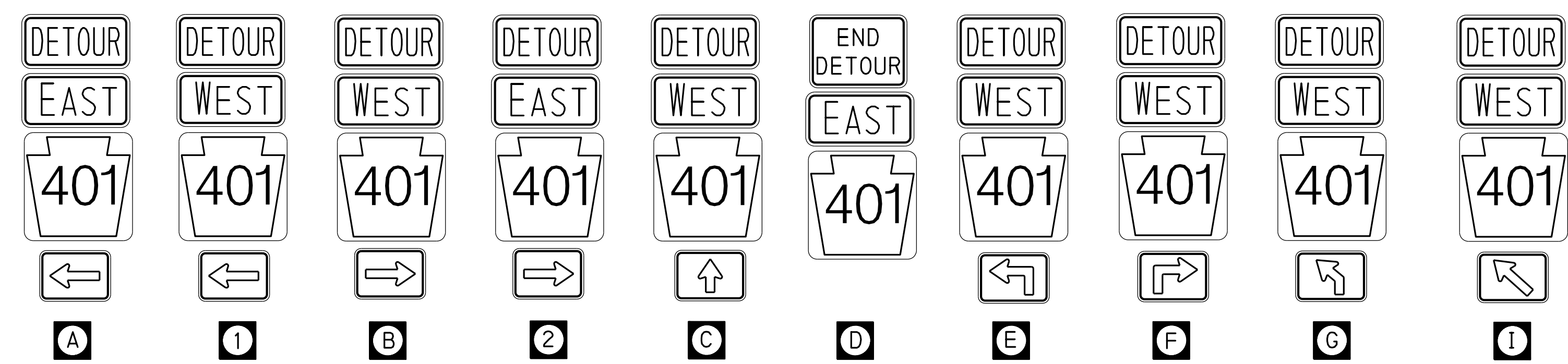
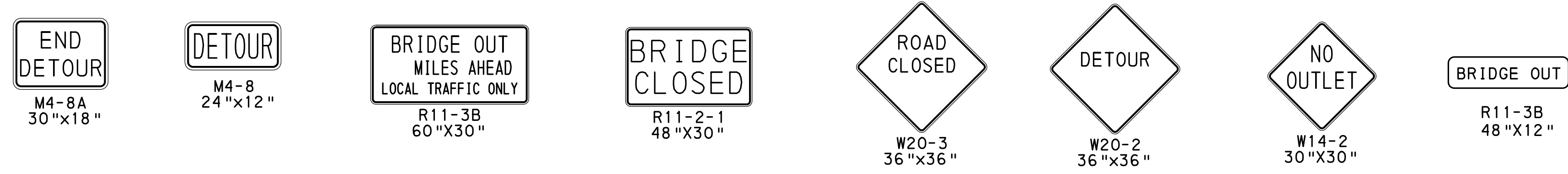
PROJECT SITE



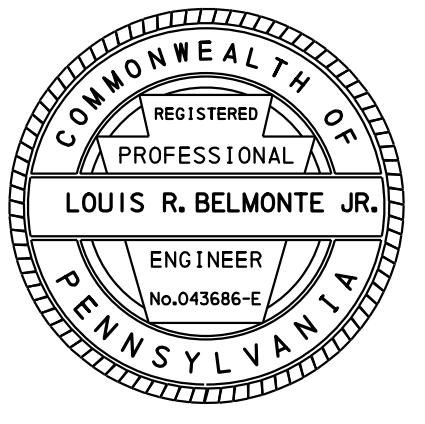
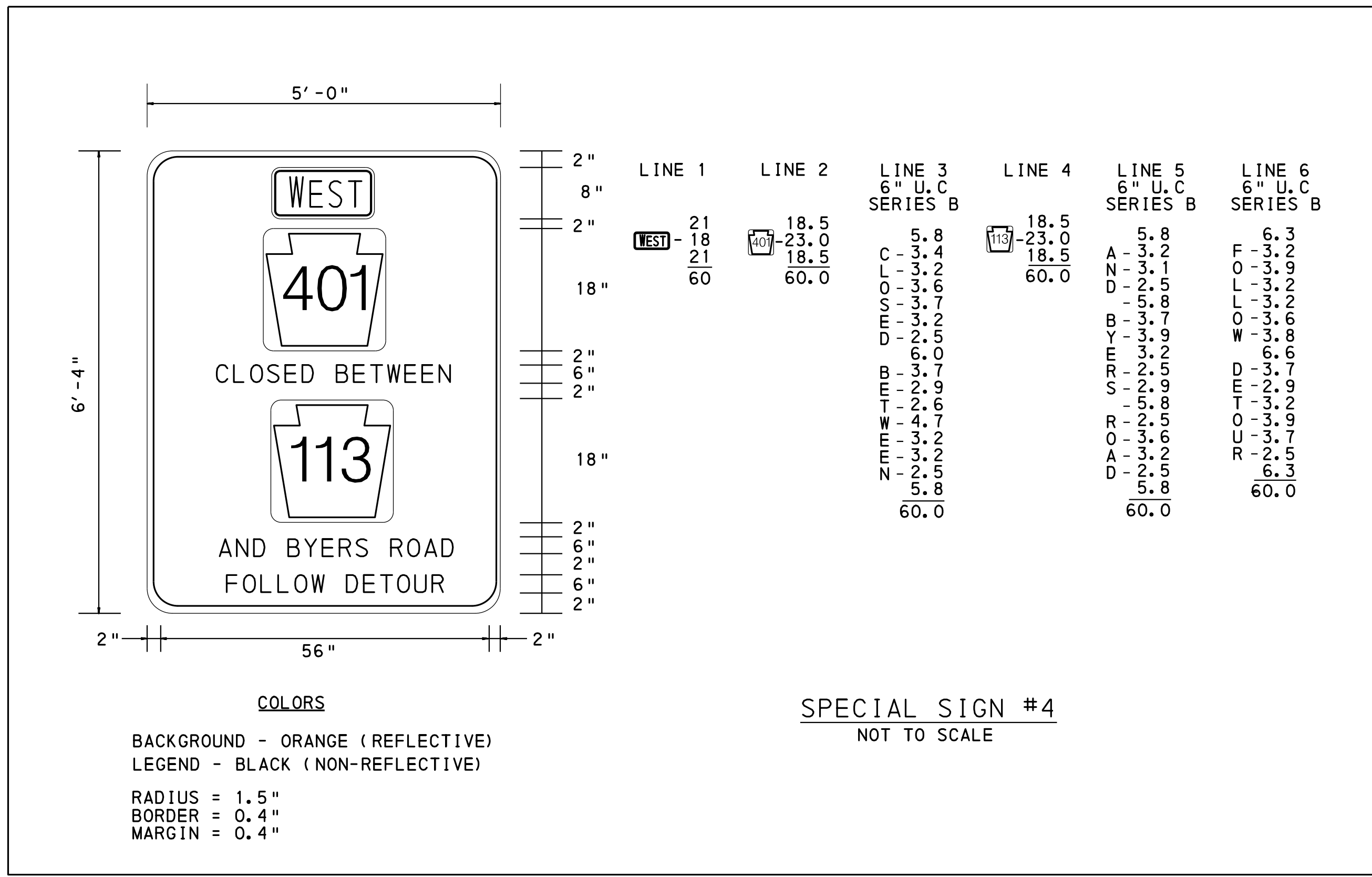
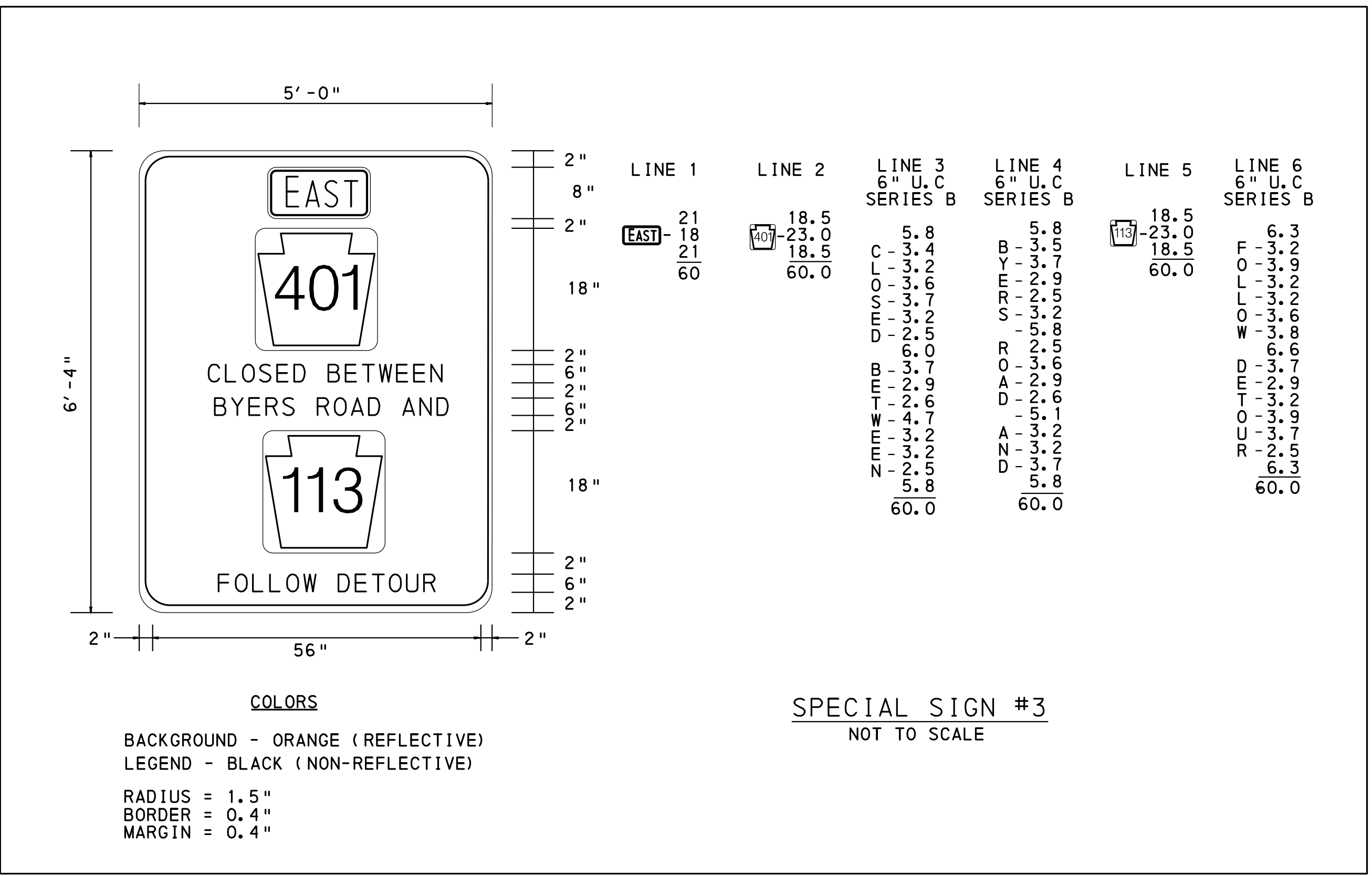
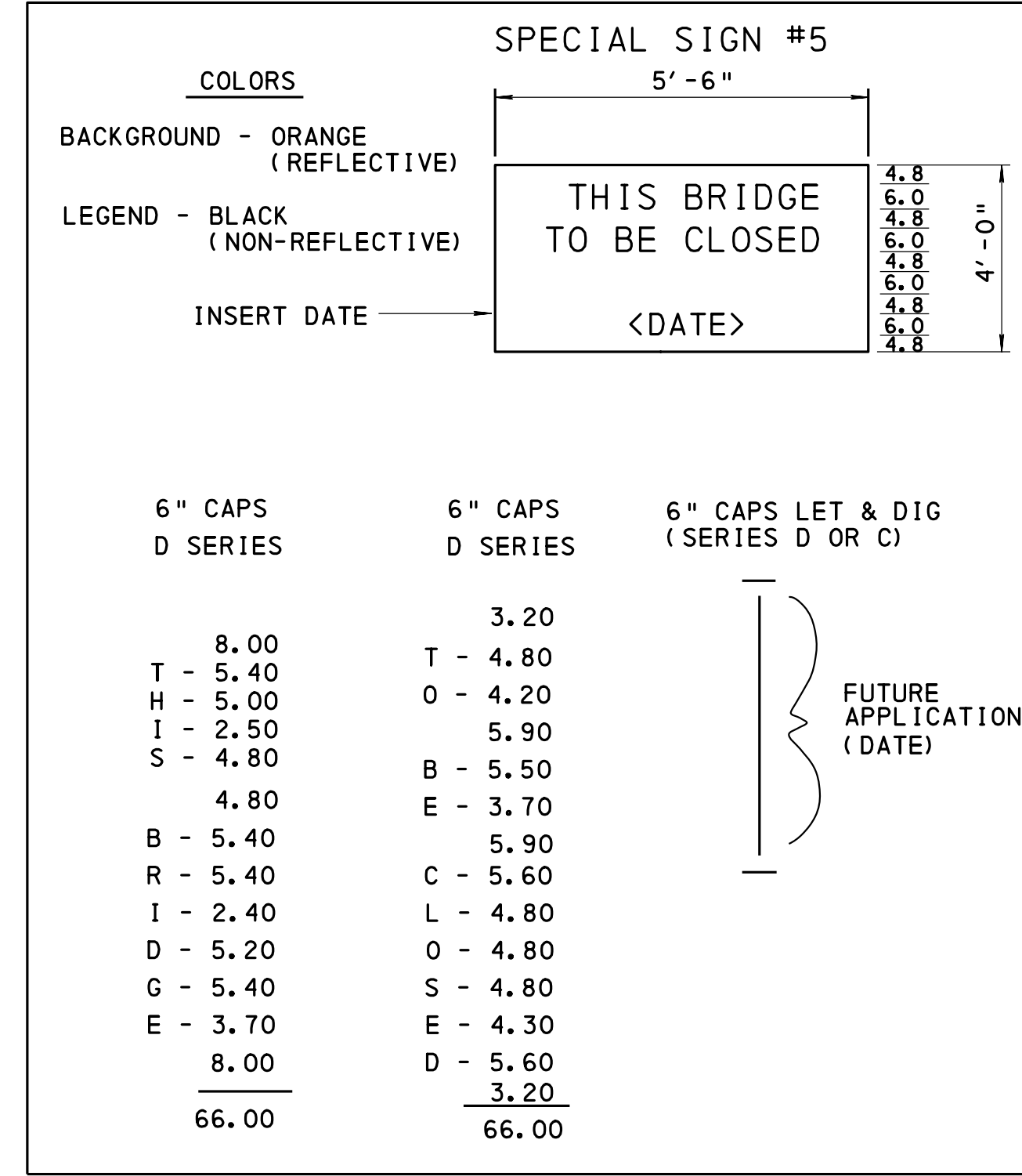
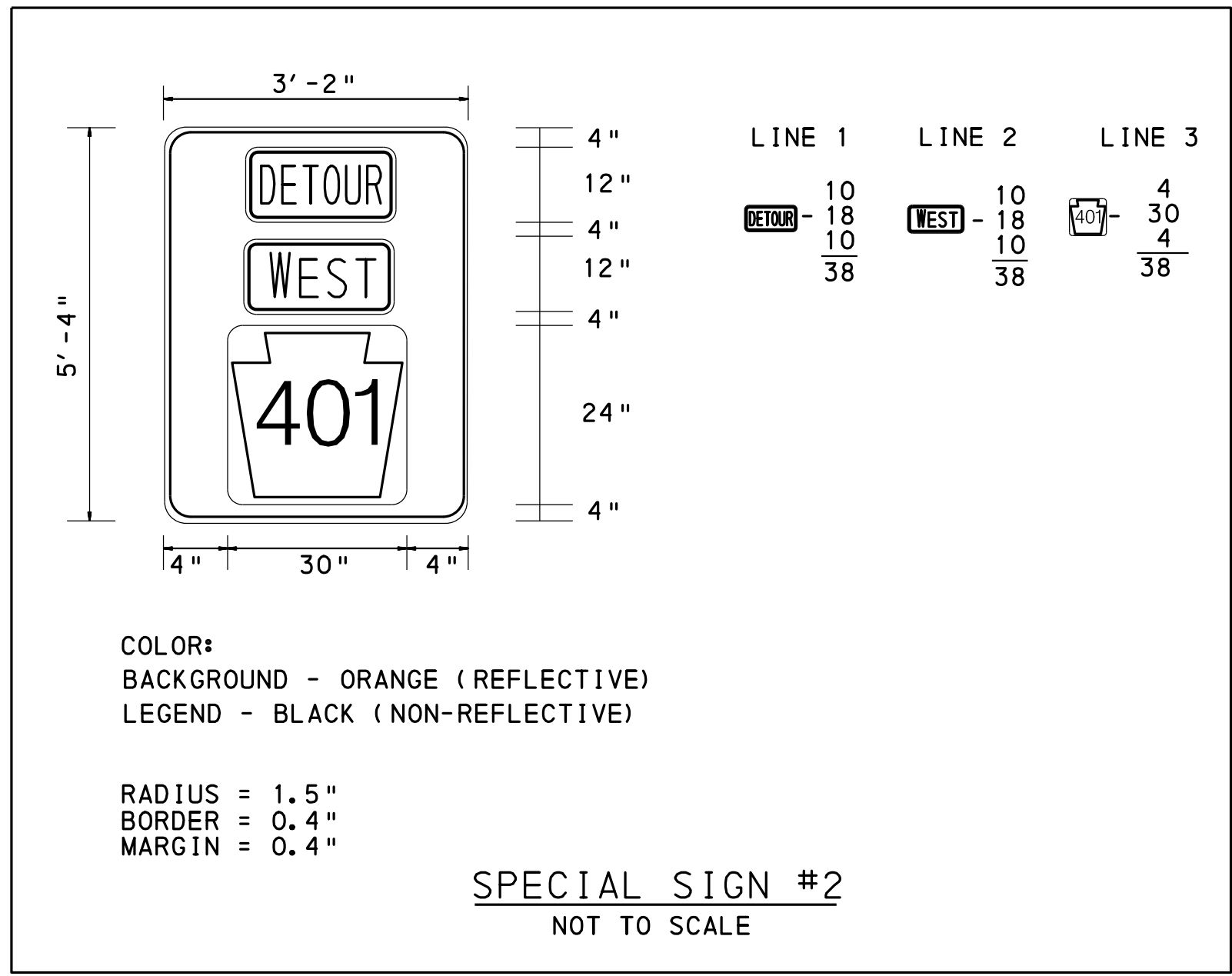
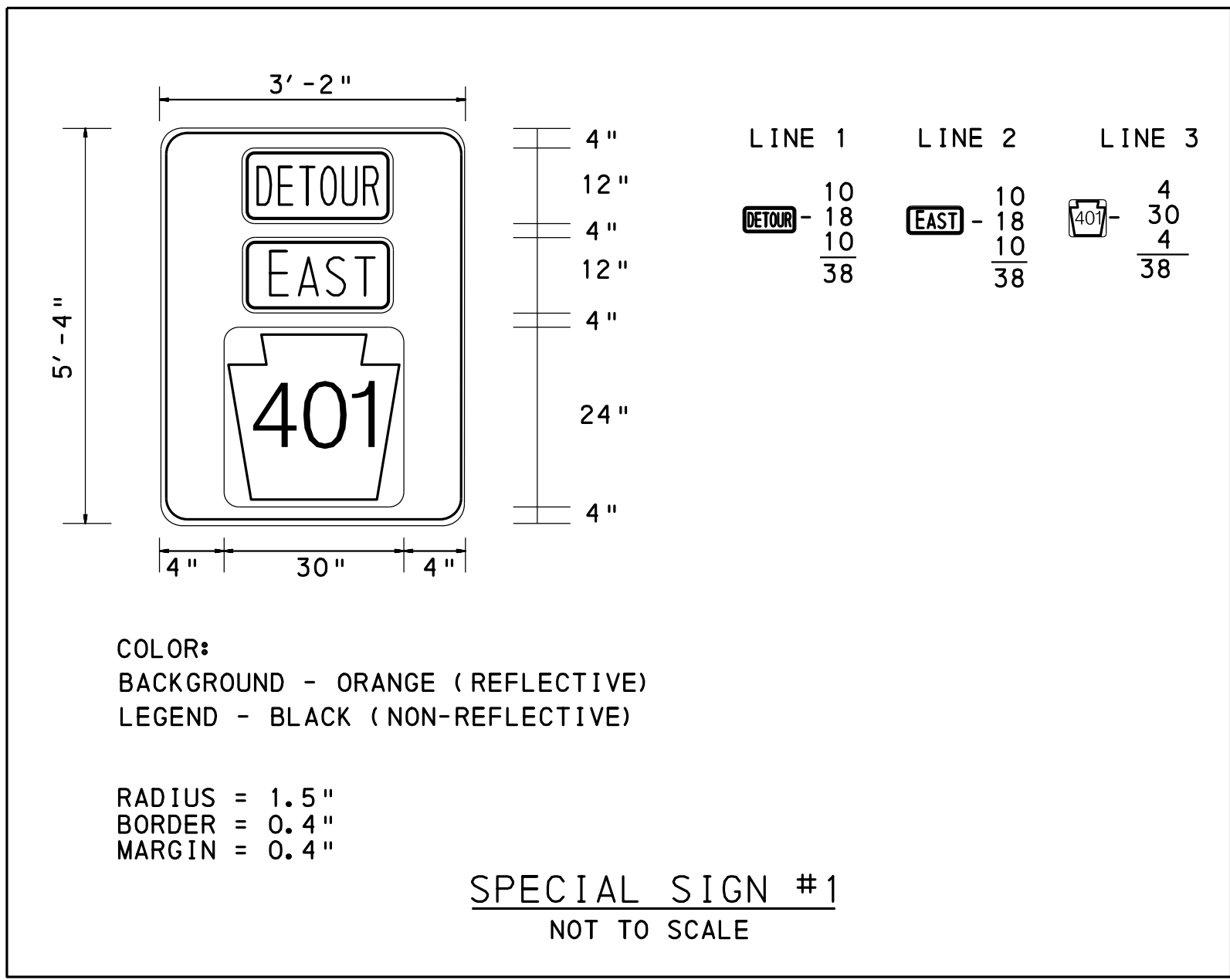
ENLARGEMENT



DISTRICT	COUNTY	ROUTE	SECTION	SHEET
6-0	CHESTER	401	CB4	2 OF 4
WEST PIKELAND TOWNSHIP				
REV NO	REVISIONS	DATE	BY	APPD



DISTRICT	COUNTY	ROUTE	SECTION	SHEET
06-0	CHESTER	401	CB4	3 OF 4
WEST PIKELAND TOWNSHIP				
REVISION NUMBER	REVISIONS	DATE	BY	



DISTRICT	COUNTY	ROUTE	SECTION	SHEET
6-0	CHESTER	401	CB4	4 OF 4
WEST PIKELAND TOWNSHIP				

## GENERAL NOTES

- THIS WORK CONSISTS OF THE MAINTENANCE OF TRAFFIC AND THE PROTECTION OF THE TRAVELING PUBLIC APPROACHING THE CONSTRUCTION AREA AND WITHIN THE LIMITS OF CONSTRUCTION.
- FURNISH, ERECT, PLACE AND MAINTAIN TRAFFIC CONTROL SIGNS AND DEVICES AND MAINTAIN TRAFFIC DURING HOURS OF CONSTRUCTION AND AT ALL OTHER TIMES IN ACCORDANCE WITH THE METHODS INDICATED ON THESE DRAWINGS, AND, IN THE MOST CURRENT EDITION OF:
  - THE SPECIAL PROVISIONS OF THE CONTRACT.
  - PENNDOT PUBLICATION 213, WORK ZONE TRAFFIC CONTROL.
  - PA CODE, TITLE 67, CHAPTER 212, OFFICIAL TRAFFIC CONTROL DEVICES.
  - PENNDOT PUBLICATION NO. 35, APPROVED CONSTRUCTION MATERIALS (BULLETIN 15).
  - PENNDOT PUBLICATION NO. 408, SPECIFICATIONS;
  - PUBLICATION NO. 236, HANDBOOK OF APPROVED SIGNS;
  - PUBLICATION NO. 111, TRAFFIC CONTROL STANDARD, TC-8600 AND TC-8700 SERIES;
  - PUBLICATION NO. 46 AND MUTCD SPECIFICATIONS.
- IMMEDIATELY UPON COMPLETION OF THE WORK, REMOVE THE TRAFFIC CONTROL DEVICES. UNLESS OTHERWISE SPECIFIED IN THE SPECIAL PROVISIONS, THE DEVICES REMAIN THE CONTRACTOR'S PROPERTY. THE DEPARTMENT WILL REMOVE ANY TRAFFIC CONTROL DEVICES ERECTED BY THE DEPARTMENT FORCES.
- THE DEPARTMENT REPRESENTATIVE WILL INSPECT ALL TRAFFIC CONTROL DEVICES PRIOR TO THE START OF WORK.
- COVER OR REMOVE ALL SIGNS NOT IN USE.
- NOTIFY THE DISTRICT 6-0 PRESS OFFICE AT 610-205-6797, LOCAL EMERGENCY OFFICIALS (POLICE, FIRE, AMBULANCE), SEPTA, AND SCHOOL DISTRICTS THREE WEEKS IN ADVANCE OF ANY DETOURS, LANE CLOSURES OR RESTRICTIONS.
- NOTIFY THE DISTRICT 6-0 REGIONAL TRAFFIC MANAGEMENT CENTER (RTMC), 610-205-6934, FIFTEEN (15) MINUTES IN ADVANCE OF ANY PROPOSED LANE OR SHOULDER RESTRICTIONS, ROAD CLOSURE, OR ANY OPERATION IMPEDING THE FLOW OF TRAFFIC. NOTIFY THE RTMC WHEN THE ROAD IS RESTORED TO NORMAL OPERATION.
- NO WORK MAY BE DONE THAT WILL RESULT IN LANE CLOSURES OR IMPEDE THE FLOW OF TRAFFIC ON LEGAL HOLIDAYS AND MONDAY THROUGH FRIDAY, BETWEEN THE HOURS OF 6:00 AM TO 9:00 AM AND 3:00 PM TO 6:00 PM.
- POST ADVANCE NOTICE OF CLOSURE SIGNS (#23-101) TWO WEEKS PRIOR TO IMPLEMENTING A DETOUR.
- THE LOCATION AND MESSAGE OF PORTABLE CHANGEABLE MESSAGE SIGNS (PCMS) IS TO BE USED AS DIRECTED BY PENNDOT TRAFFIC UNIT. CONTRACTOR TO COORDINATE WITH THE DEPARTMENT REPRESENTATIVE AND LOCAL POLICE DEPTMENTS TO DETERMINE THE EXACT LOCATION AND THE APPROPRIATE MESSAGE TO BE DISPLAYED ON EACH PCMS.
- NOTIFY THE PENNSYLVANIA DEPARTMENT OF TRANSPORTATION DISTRICT PRESS OFFICE AT (610)205-6797 THREE WEEKS PRIOR TO COMMENCEMENT OF WORK. SUBMIT A ROAD RESTRICTION FORM TO THE DISTRICT 6-0 PRESS OFFICE ONE WEEK (OR AS REQUIRED BY THE PRESS OFFICE) IN ADVANCE OF ANY WEEKLY LANE CLOSURES AND THREE WEEKS IN ADVANCE OF ANY FULL CLOSURES THAT NECESSITATE A DETOUR. THE FORM IS AVAILABLE ONLINE AT PENNDOT.GOV/DISTRICTS6/ROADRESTRICTIONFORM OR BY CALLING 610-205-6797.
- THESE PLANS ARE NOT INTENDED TO RELIEVE THE CONTRACTOR THE RESPONSIBILITY FOR THE PROTECTION OF THE PUBLIC AND THE CONSTRUCTION PERSONNEL AS SPECIFIED IN SECTION 901.3 (c) OF PENNDOT PUBLICATION 408. THE STANDARDS PRESCRIBED ARE MINIMUM AND ADDITIONAL PROTECTION MAY BE NEEDED IF PROBLEMS ARE ENCOUNTERED DURING THE TERM OF THE CONTRACT. CONSTANTLY REVIEW THIS PLAN FOR ADEQUACY AND RECOMMEND CHANGES FOR DEPARTMENT APPROVAL WHEN INADEQUACIES ARE DISCOVERED.
- POST 2 WEEKS IN ADVANCE OF ROAD CLOSURE "THIS BRIDGE TO BE CLOSED FOR CONSTRUCTION" SIGNS (#23-101) AS INDICATED ON DETOUR PLAN. REMOVE THESE SIGNS AT START OF ROAD CLOSURE WORK.
- THE POSTED SPEED LIMITS FOR SR 0401 (CONESTOGA ROAD) IS 45 MPH

TABULATION OF LONG-TERM TRAFFIC CONTROL SIGNS AND DEVICES INCLUDED ADDITIONAL TRAFFIC CONTROL SIGNS FOR PCMS BOARDS TO BE USED AS DIRECTED BY PENNDOT TRAFFIC UNIT.			
STD. NO	DESCRIPTION	SIZE	QUANTITY
M6-2L	45° LEFT TURN MARKER	21 "X15 "	1
M6-3	STRAIGHT THROUGH MARKER	21 "X15 "	14
M6-1	90° RIGHT TURN MARKER	21 "X15 "	2
M6-1	90° LEFT TURN MARKER	21 "X15 "	3
M5-2R	ADVANCE 45° RIGHT TURN MARKER	21 "X15 "	1
M5-2L	ADVANCE 45° LEFT TURN MARKER	21 "X15 "	1
M5-1R	ADVANCE 90° RIGHT TURN MARKER	21 "X15 "	2
M5-1L	ADVANCE 90° LEFT TURN MARKER	21 "X15 "	3
M1-5	PA ROUTE MARKER (3 DIGITS)	30 "X24 "	41
M3-2	EAST MARKER	24 "X12 "	9
M3-4	WEST MARKER	24 "X12 "	17
M3-8A	END DETOUR	30 "X18 "	1
M4-8	DETOUR	24 "X12 "	32
M4-10L	DETOUR ARROW, LEFT	48 "X18 "	1
R11-2	BRIDGE CLOSED	48 "X30 "	4
W20-3	ADVANCE ROAD CLOSED	36 "X36 "	5
W20-2	ADVANCE DETOUR	36 "X36 "	4
R11-3B	BRIDGE OUT PLAQUE	48 "X12 "	1
T	R11-4 ROAD CLOSED TO THRU TRAFFIC	60 "X30 "	4
	W14-2 NO OUTLET	30 "X30 "	4
U	TYPE 3 BARRICADE		4
	R11-3B BRIDGE OUT 1/2 MILES AHEAD LOCAL TRAFFIC ONLY	60 "X30 "	1
W	TYPE 3 BARRICADE		1
	R11-3B BRIDGE OUT 1 MILES AHEAD LOCAL TRAFFIC ONLY	60 "X30 "	1
Y	TYPE 3 BARRICADE		2
	R11-3B BRIDGE OUT 1/4 MILES AHEAD LOCAL TRAFFIC ONLY	60 "X30 "	1
SPECIAL #1	TYPE 3 BARRICADE		1
SPECIAL #2		38 "X60 "	10
V1	SP#3 CLOSED BETWEEN BYERS ROAD AND FOLLOW DETOUR	60 "X76 "	2
	TYPE 3 BARRICADE		2
V	SP#4 CLOSED BETWEEN AND BYERS ROAD FOLLOW DETOUR	60 "X76 "	5
	TYPE 3 BARRICADE		
X	R11-2-1 BRIDGE CLOSED	48 "X30 "	4
	TYPE 3 BARRICADE		4
Z	W23-101 THIS BRIDGE TO BE CLOSED 14 DAYS NOTE	66 "X48 "	2
	TYPE 3 BARRICADE		2
	TYPE B FLASHING LIGHT		45
	PORTABLE CHANGEABLE MESSAGE SIGN (PCMS)		3

RECOMMENDED \_\_\_\_\_ 20 \_\_\_\_\_  
ADE - OPERATIONS  
**TRAFFIC CONTROL PLAN**

