

STATION 1



WELCOME

Public Meeting

US 219 Meyersdale, PA to
Old Salisbury Road, MD

PLEASE SIGN IN

STATION 2



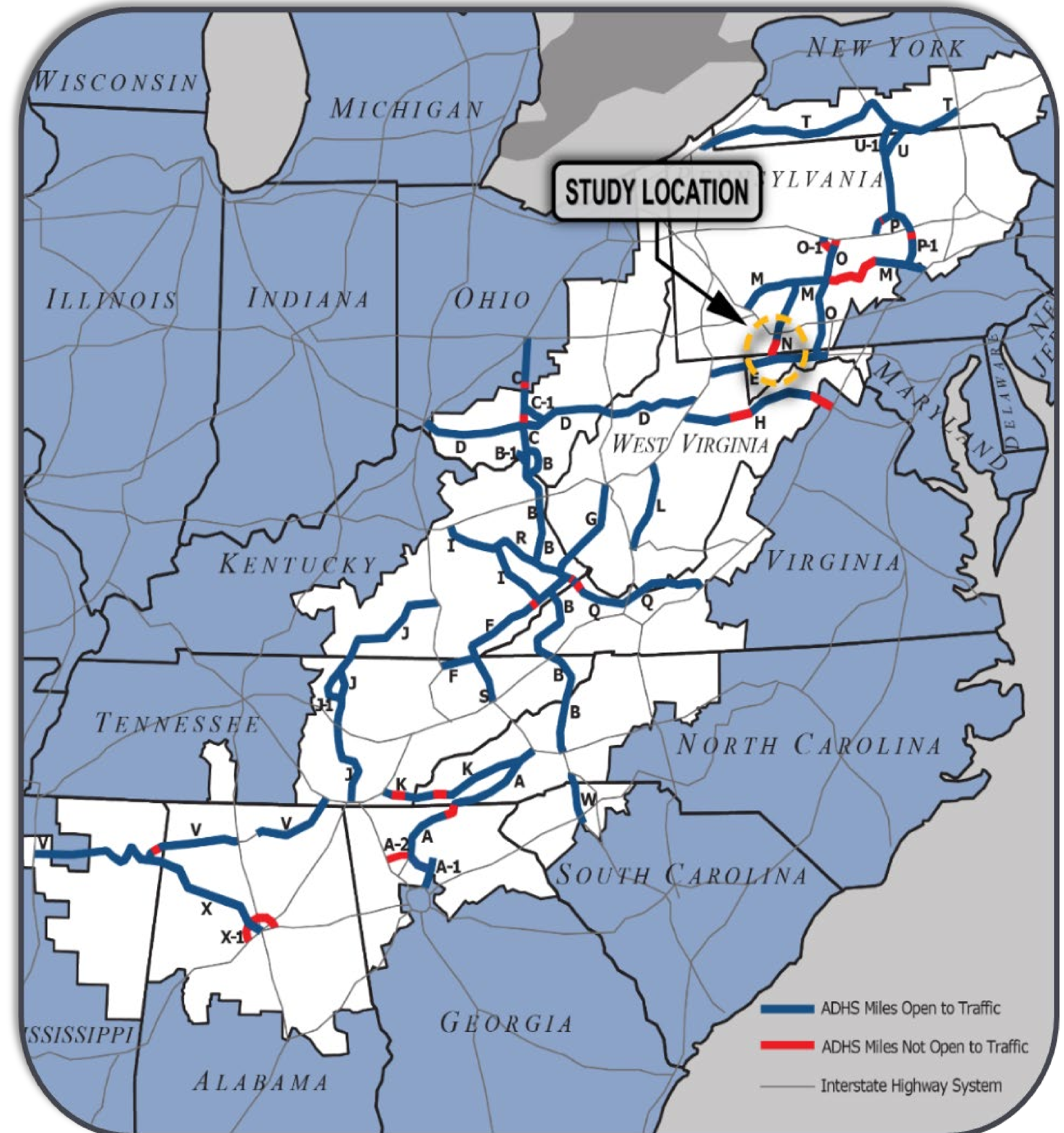
Purpose & Need

Purpose:

The purpose of the US 219 Section 050 from Meyersdale to Old Salisbury Road Project is to complete Corridor N of the Appalachian Development Highway System, to **improve the system linkage** in the region, **provide safe and efficient access** for motorists traveling on US 219, and provide a transportation infrastructure to **support economic opportunities** within the Appalachian Region.

Need:

1. The existing US 219 roadway network **does not provide efficient mobility for trucks**
2. There are numerous **roadway and geometric deficiencies** present along the existing US 219 alignment which do not meet current design criteria and contribute to slower travel speeds through the corridor
3. Existing US 219 **does not provide the infrastructure needed to access the surrounding municipalities** along with labor and business markets and is a contributing factor in limiting economic opportunities to the Appalachian Region

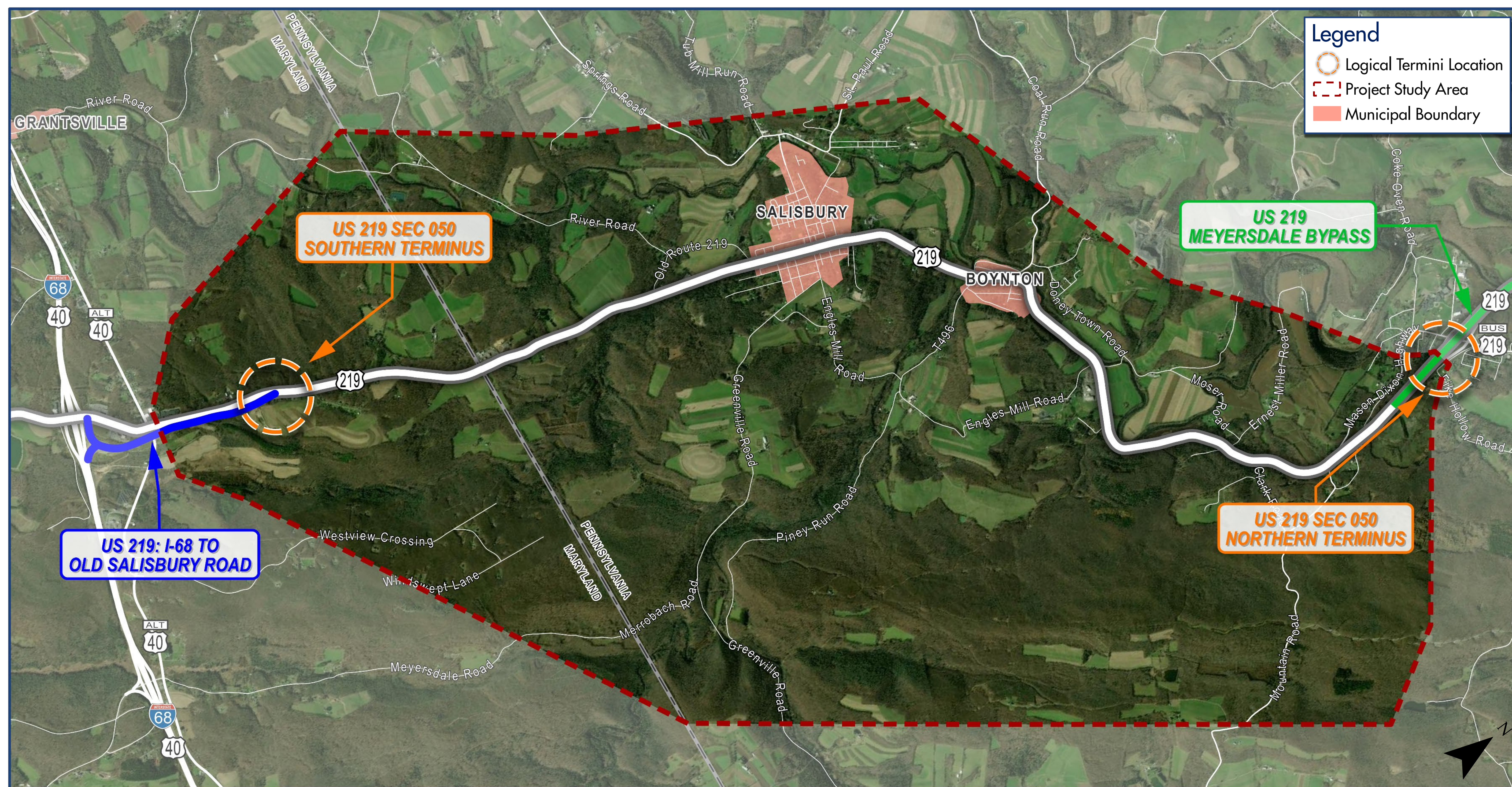


STATION 2



Logical Termini

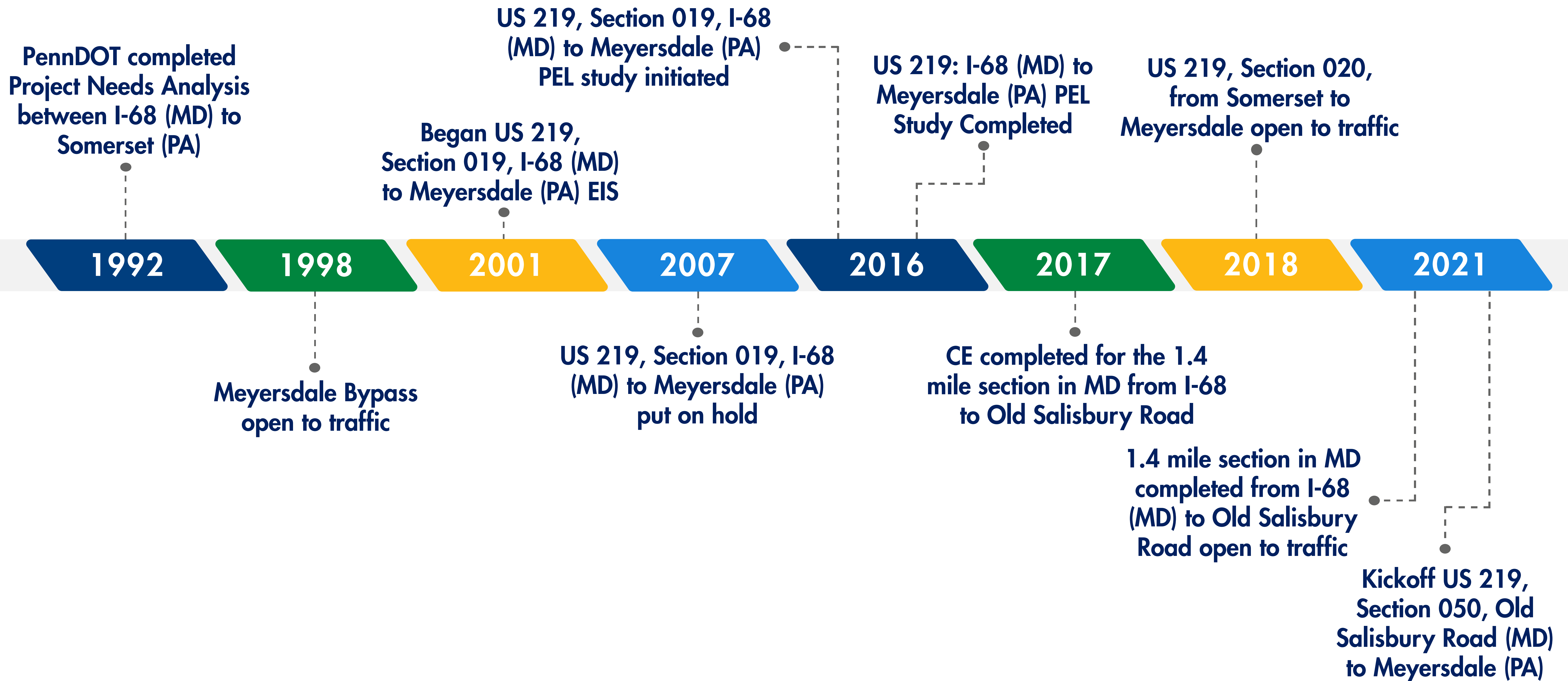
Since the southern 1.4 miles of US 219 has been completed and the existing interchange between I-68 and US 219 has been upgraded, it would no longer be logical to consider alternatives which would create a new interchange on I-68. Nor would a new interchange meet current design criteria for interchange spacing. Therefore, the study area for US 219 Section 050 has been condensed and new logical southern terminus has been established at the northern end of the newly completed section of US 219 near Old Salisbury Road.



STATION 3



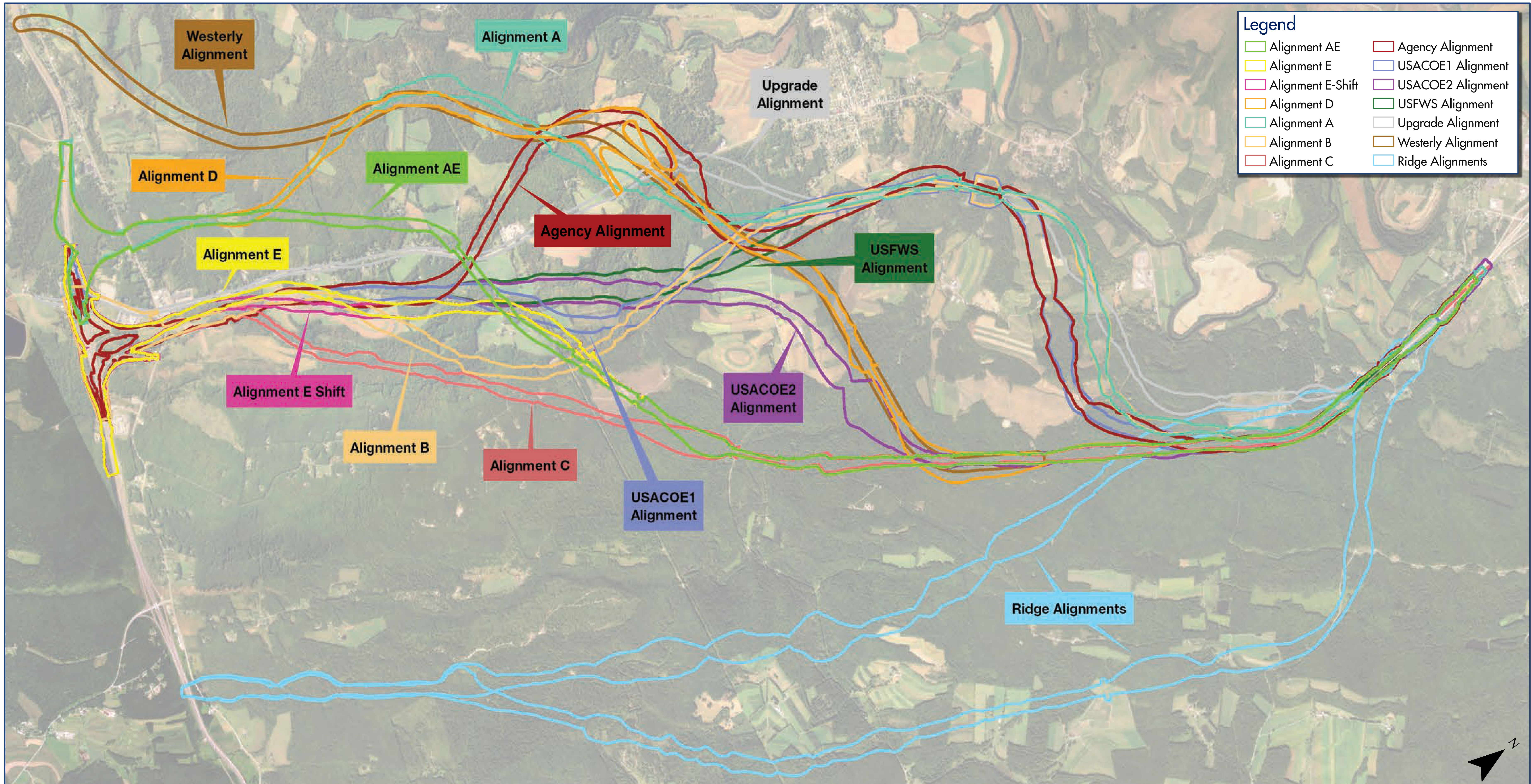
Project History



STATION 3



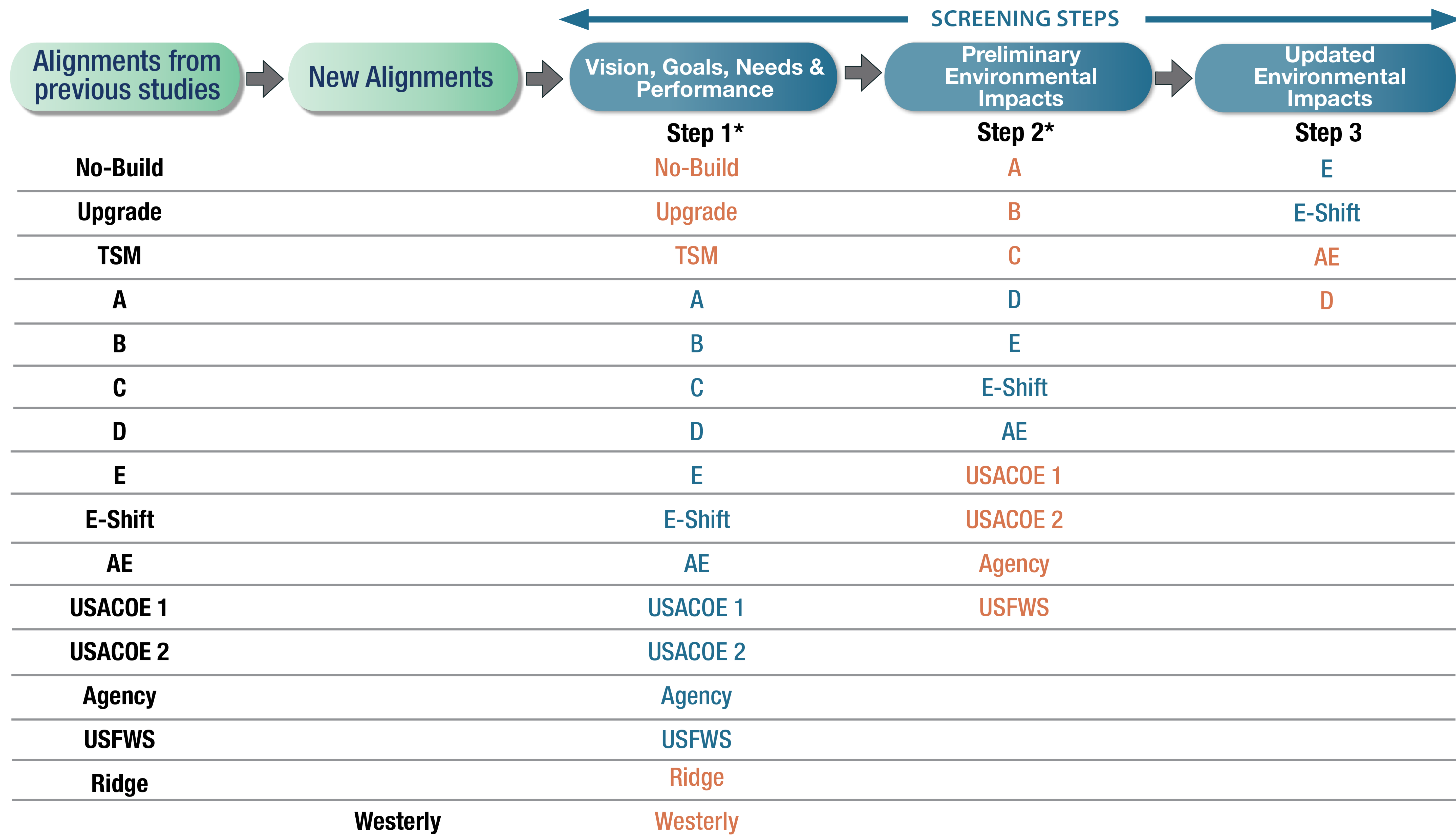
History of PEL Alignments



STATION 3



PEL Alignment Screening Process Results

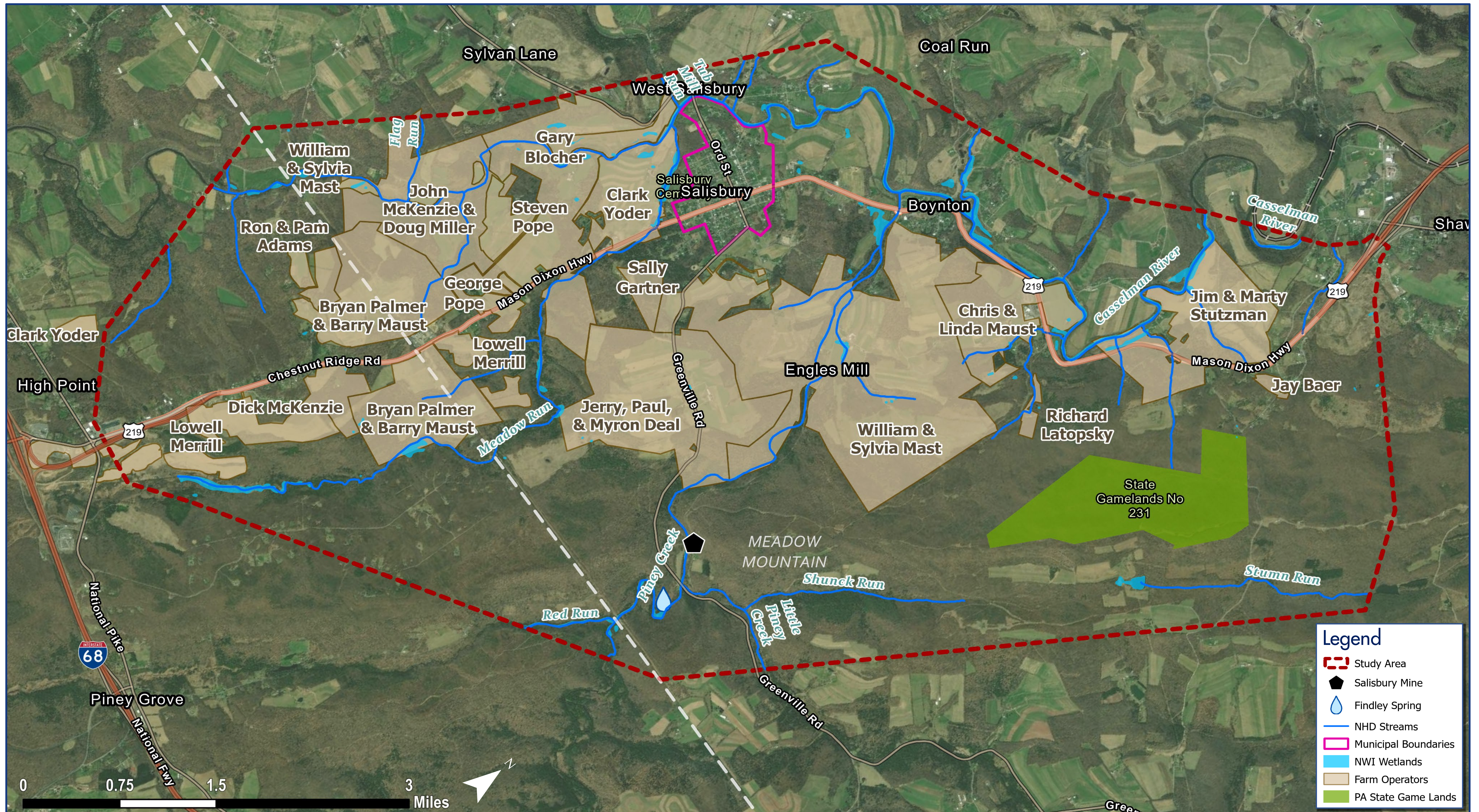


Considered reasonable at this step
 Considered unreasonable at this step

STATION 4



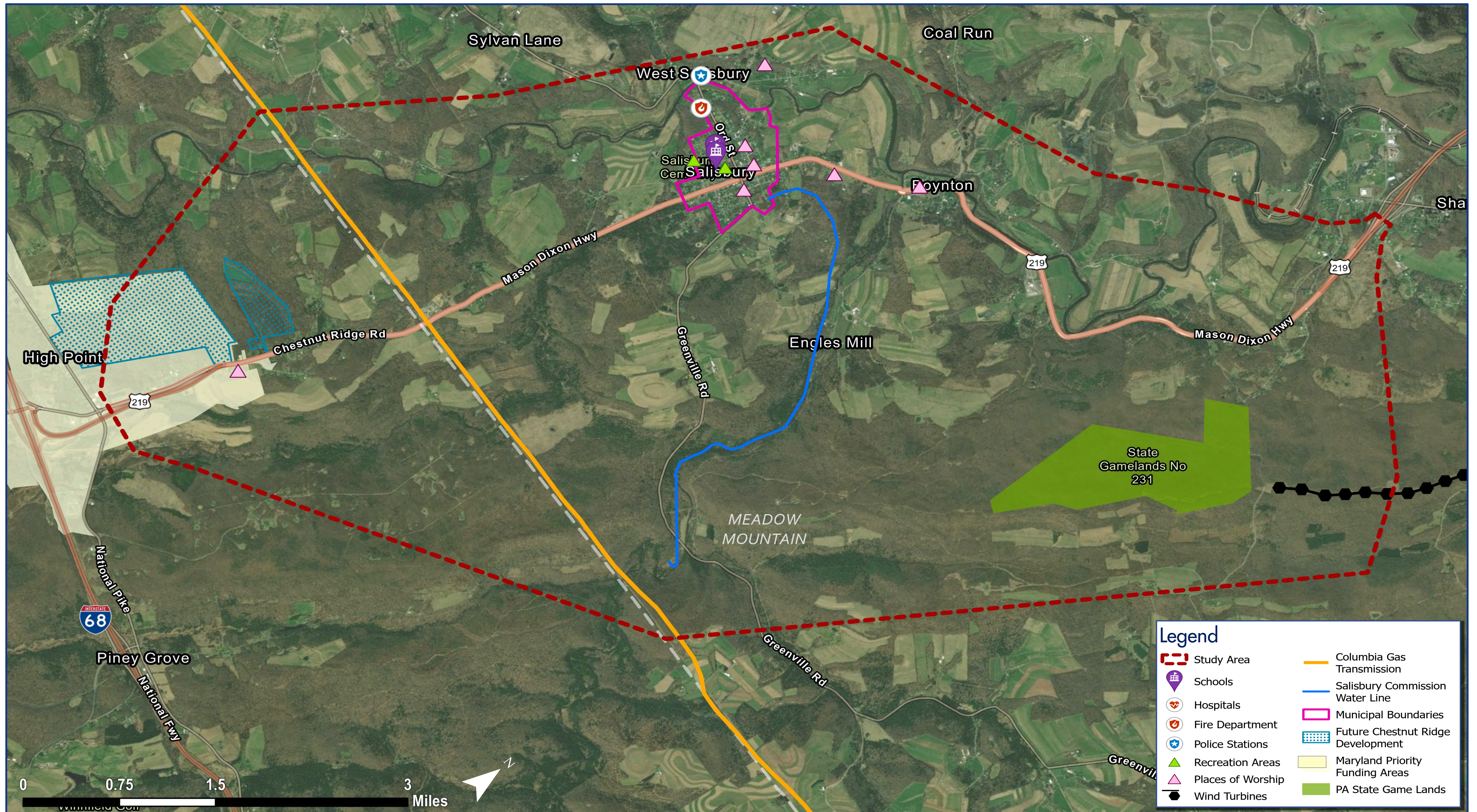
Natural Resources



STATION 4



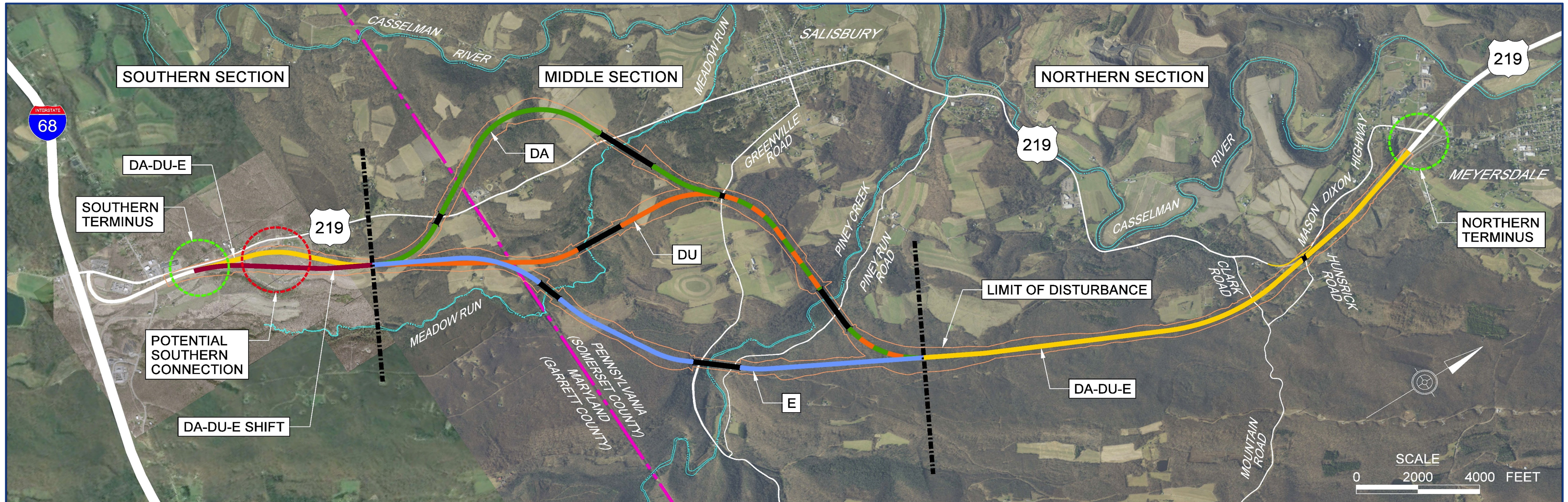
Socioeconomic Resources



STATION 5



Proposed Alternatives to be Evaluated in NEPA



POTENTIAL SECTION COMBINATIONS				
PEL ALIGNMENTS (2016)	ALIGNMENT (2022)	SOUTHERN SECTION	MIDDLE SECTION	NORTHERN SECTION
<i>D, AGENCY</i>	DA	Yellow	Green	Yellow
<i>D, AGENCY, E SHIFT</i>	DA SHIFT	Red	Green	Yellow
<i>D, USFWS, USACOE2</i>	DU	Yellow	Orange	Yellow
<i>D, USFWS, USACOE2, E SHIFT</i>	DU SHIFT	Red	Orange	Yellow
<i>E</i>	E	Yellow	Blue	Yellow
<i>E SHIFT</i>	E SHIFT	Red	Blue	Yellow

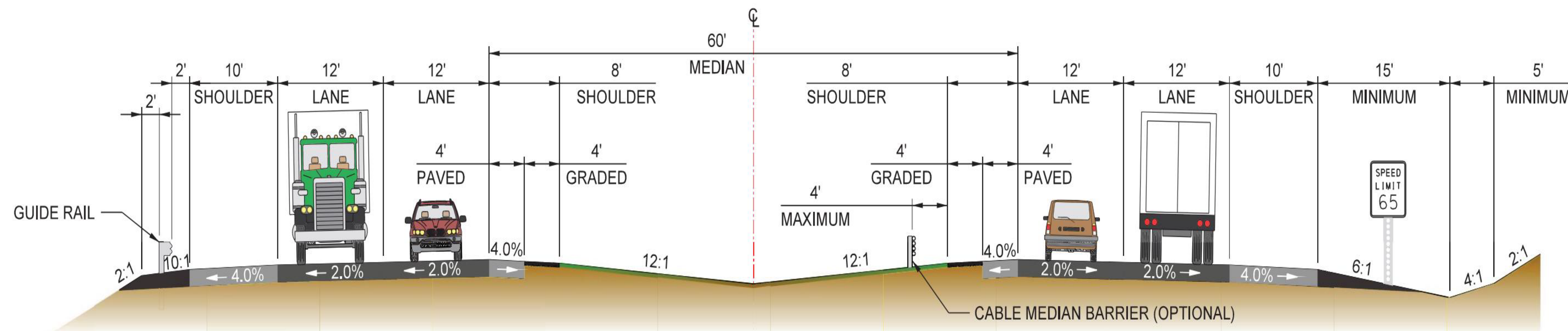
LEGEND

- SECTION BREAK
- MARYLAND / PENNSYLVANIA STATE LINE
- PROPOSED BRIDGE

STATION 6



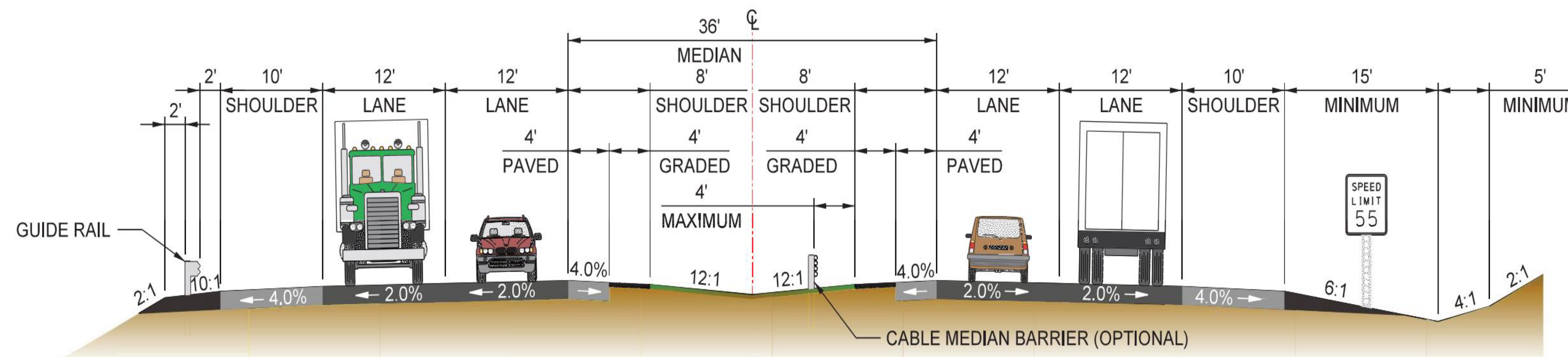
US 219 Typical Sections



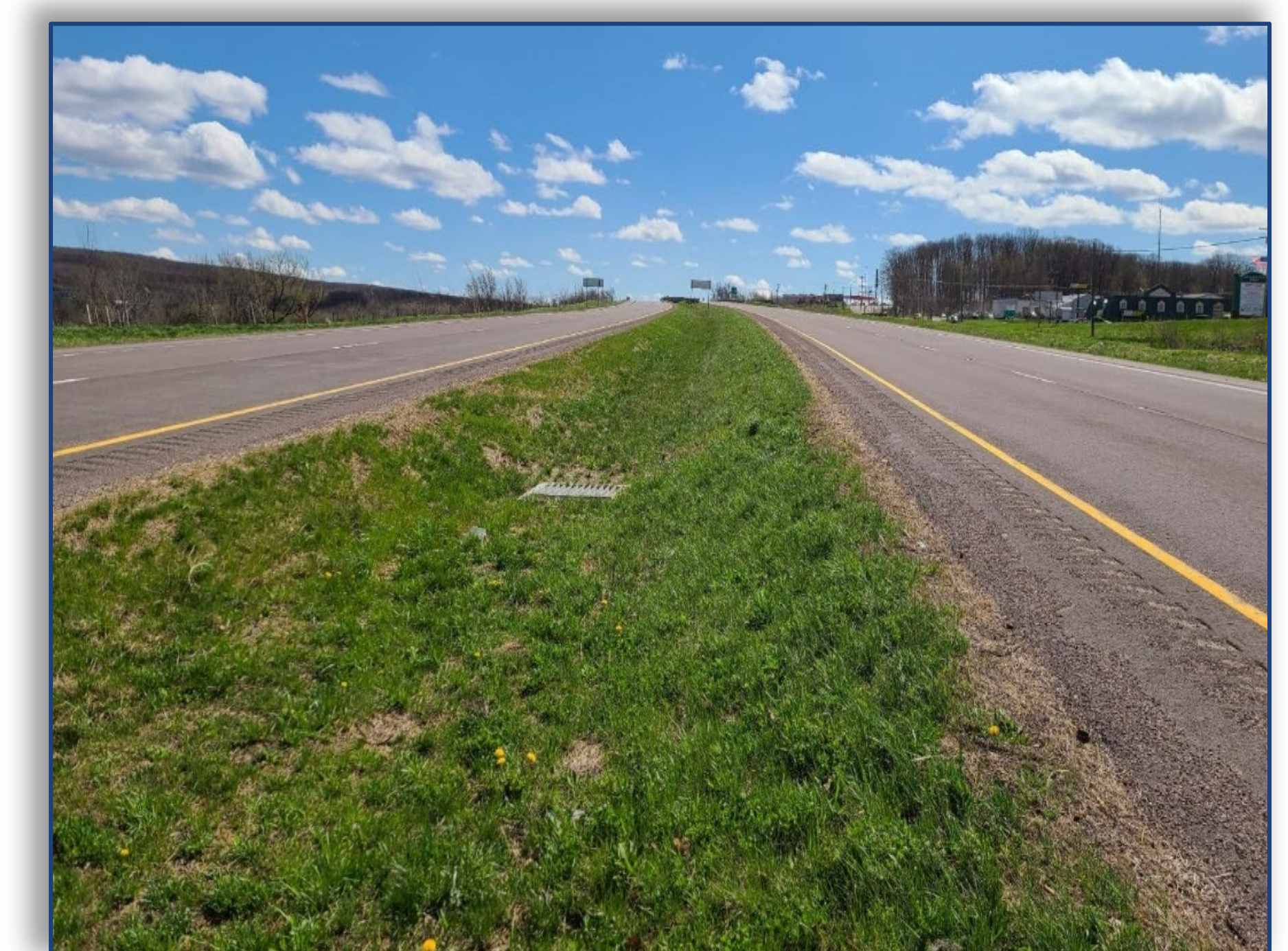
US 219 TYPICAL SECTION WITH 60' MEDIAN



US 219 WITH 60' MEDIAN



US 219 TYPICAL SECTION WITH 36' MEDIAN



US 219 WITH 36' MEDIAN

How Can I Get Involved in the Section 106 Process?

The National Historic Preservation Act of 1966 recognizes that historic preservation is a public interest. For the US 219 Meyersdale, PA to Old Salisbury Road, MD Transportation Project, the Federal Highway Administration is required to consider the effects of its project on historic properties in consultation with identified historic preservation stakeholders. Members of the public may request to formally participate as consulting parties in the Section 106 review when they have demonstrated interest in the undertaking, either because of a legal or economic relation to the undertaking or National Historic Landmark, or because of their concern regarding effects of the undertaking on historic properties. FHWA, in consultation with the SHPO/THPO, shall consider all such requests.

The Federal Highway Administration, consulting parties, and interested parties strive to reach agreement on measures to avoid, minimize, and mitigate adverse effects on historic properties and to find a balance between project goals and preservation objectives.

Comments and questions concerning the US 219 Meyersdale, PA to Old Salisbury Road, MD Transportation Project's effects on historic properties or the Section 106 process are welcome!

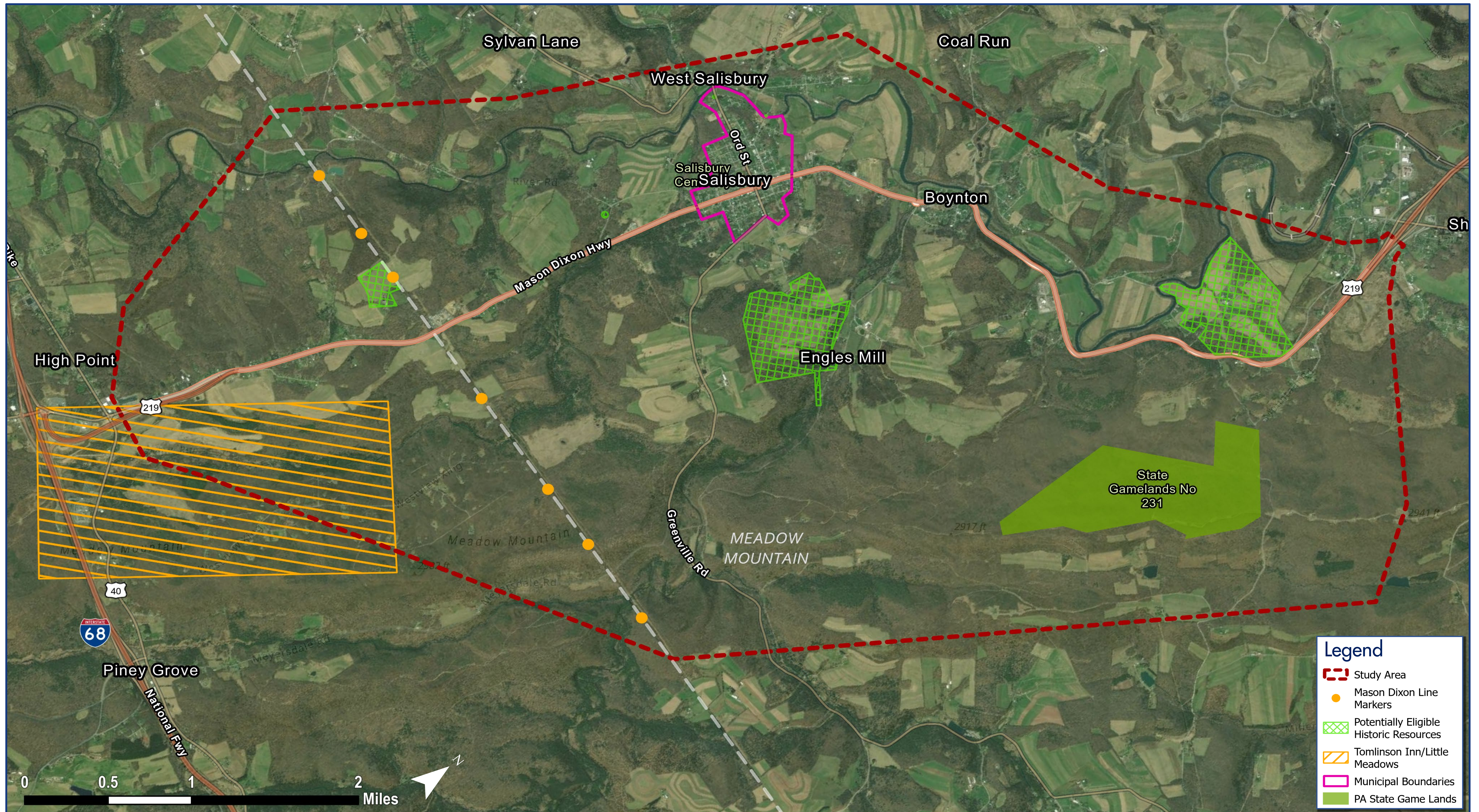
Please contact:

Kristin D. Scarr | Districts 9-0 and 12-0 Archaeologist
Department of Transportation
Bureau of Project Delivery
Highway Delivery Division
Environmental Policy and Development Section
825 N Gallatin Avenue | Uniontown, PA 15401

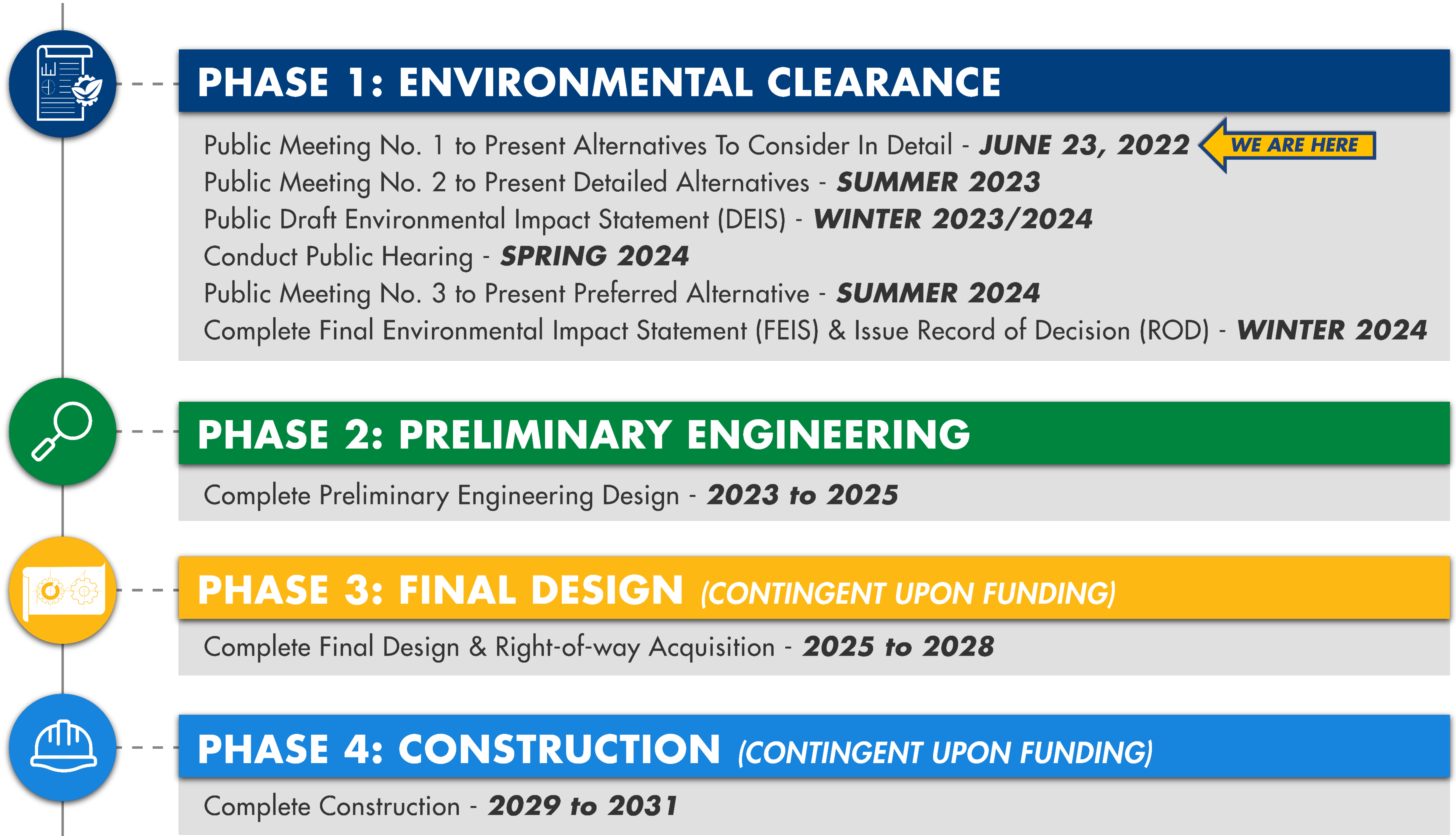
STATION 7



Historic Resources



Project Schedule



Comment Forms

Please submit your comment forms in-person tonight or through the following methods:



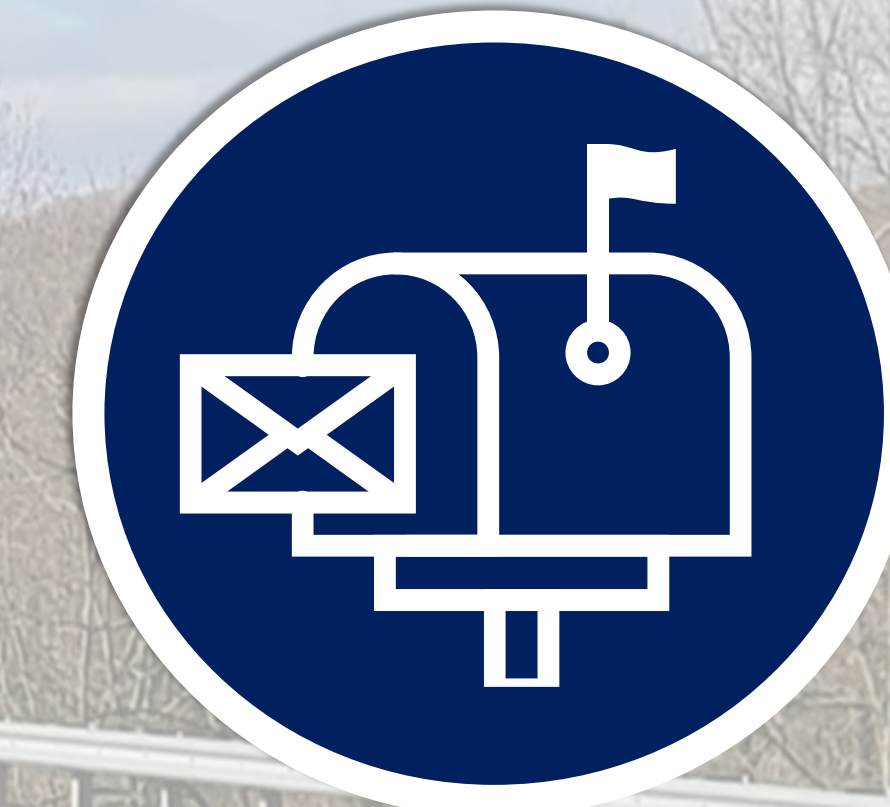
Online

penndot.pa.gov/US219MeyersdaleSouth



Email Us

ndonahoe@pa.gov



Mail-in Comments

PennDOT District 9-0
1620 North Juniata Street,
Hollidaysburg, PA 16648
Attn: Nicki Donahoe P.E. – Project Manager

**Thank you for participating.
We look forward to hearing from you!**