



Innovation in Motion

A newsletter with highlights from the STIC

INNOVATE

DEPLOY

EDUCATE



This edition of the STIC *Innovation in Motion* e-newsletter features updates on PennDOT's efforts related to the Federal Highway Administration's (FHWA) Every Day Counts Round 6 (EDC-6) innovation, Targeted Overlay Pavement Solutions (TOPS). It also highlights Cold Central Plant Recycle (CCPR) of Asphalt Flexible Pavements for Higher Volume Roads, a new innovation recently introduced by the STIC's Construction and Materials Technical Advisory Group (TAG).

The newsletter also includes recent data showing the continued effectiveness of roundabouts in Pennsylvania. Roundabouts, a FHWA EDC-2 innovation, are considered a safety countermeasure due to their ability to substantially reduce the types of

crashes that result in injury or loss of life. PennDOT continues to study crash and injury statistics at roundabout locations across the state.

Pavement Solutions Help Improve Performance, Lessen Traffic Impacts

Targeted Overlay Pavement Solutions (TOPS) build on conventional overlay methods and include new overlay materials and techniques. TOPS, an FHWA EDC-6 innovation that Pennsylvania championed, offers 13 options to help ensure safe, longer-lasting roadways. Read more [here](#) about which solutions PennDOT is advancing in Pennsylvania.



On the Road to Reducing Greenhouse Gas Emissions

Pennsylvania's STIC remains focused on moving innovations forward that increase the efficiency and resiliency of Pennsylvania's vast transportation system. Coupled with the goal of finding innovative ways to minimize the transportation industry's carbon footprint and decrease greenhouse gas (GHG) emissions, the STIC's Construction and Materials TAG recently introduced Cold Central Plant Recycle (CCPR) of Asphalt Flexible Pavements, which aims to do just that. Read more [here](#).



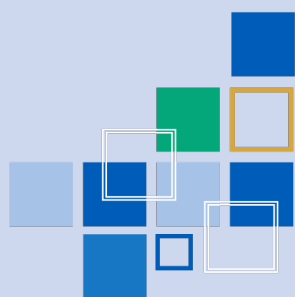
Pennsylvania Roundabouts Reducing Fatalities, Injuries, and Crashes

PennDOT recently reviewed data for 36 single-lane and six multi-lane roundabouts on state routes at intersections that were previously stop or signal controlled. This update to data released in 2022 now includes an additional seven roundabouts. These intersections were selected based on having at least three years of crash data available before and after the roundabouts were built. Read more about these intersections and the results of the study [here](#).



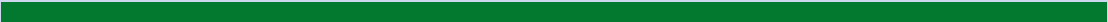
STIC Business Meeting Highlights Innovations Moving Pennsylvania Forward

Pennsylvania's ongoing efforts to develop and implement more efficient and modern ways of delivering the best in transportation services were highlighted at the latest meeting of the STIC. Read more [here](#).



STIC

Moving Innovation Forward



**For more information on these and other STIC innovations, email
penndotstic@pa.gov.**

State Transportation Innovation Council | Keystone Building, 400 North St., Harrisburg, PA 17120

[Unsubscribe](#) from future mailings