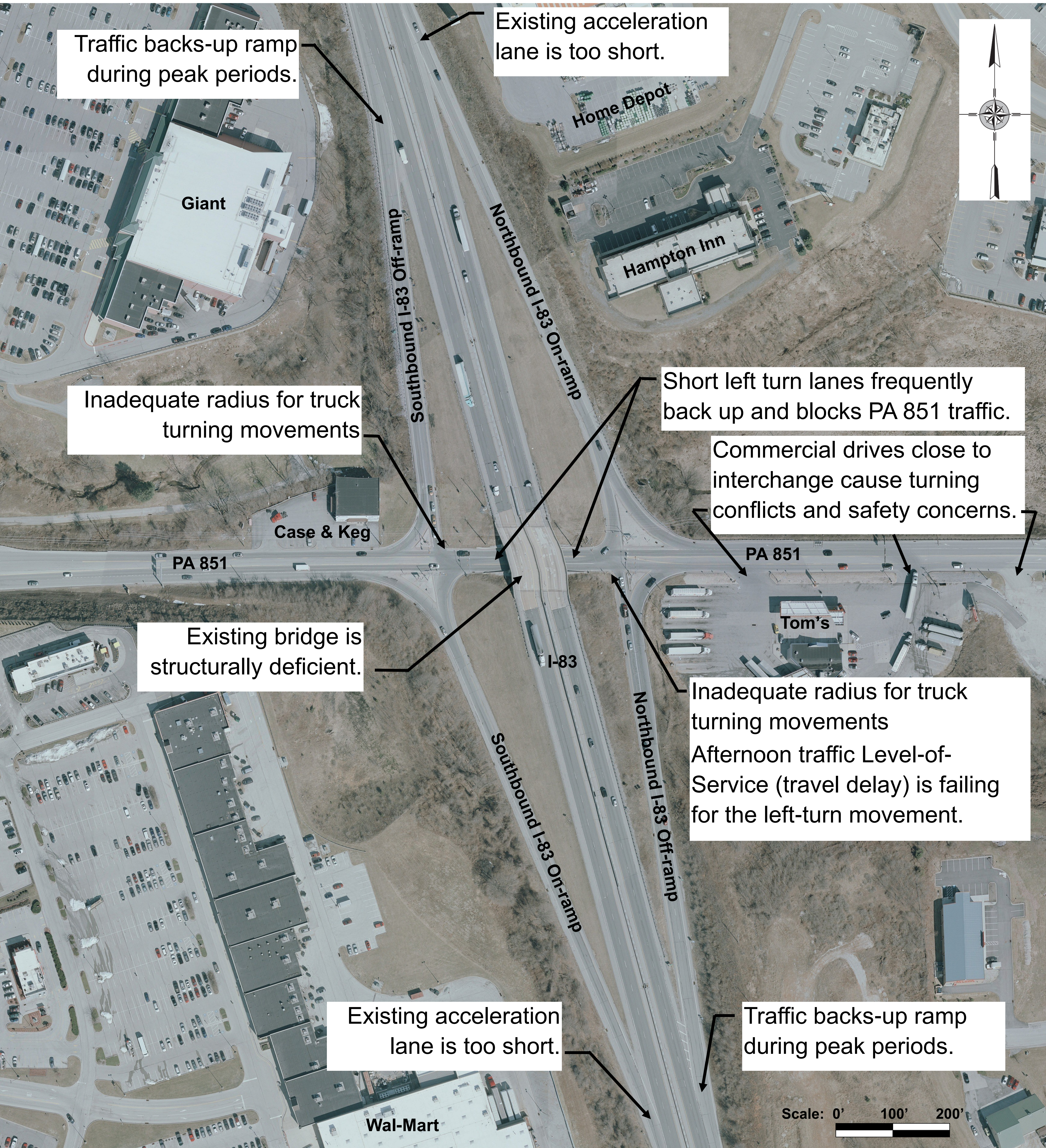
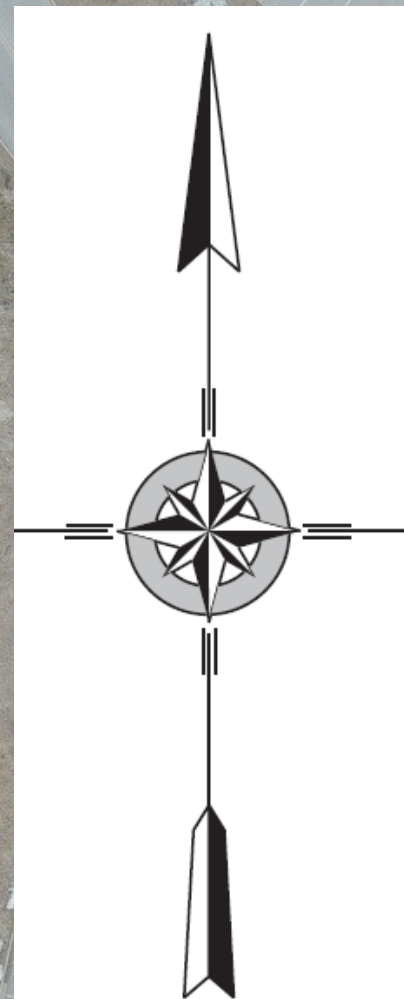


EXISTING CONDITIONS



Traffic backs-up ramp during peak periods.

Existing acceleration lane is too short.



Inadequate radius for truck turning movements

Short left turn lanes frequently back up and blocks PA 851 traffic.

Commercial drives close to interchange cause turning conflicts and safety concerns.

Existing bridge is structurally deficient.

Inadequate radius for truck turning movements
Afternoon traffic Level-of-Service (travel delay) is failing for the left-turn movement.

Existing acceleration lane is too short.

Traffic backs-up ramp during peak periods.

Scale: 0' 100' 200'